



Anderson Walk | Bury St Edmunds | IP32 6QP

£1,100 pcm

AVAILABLE NOW! 3 Bedroom semi detached home with garage & parking. The property comes with kitchen/diner, first floor bathroom, garden & gas central heating. Call now to arrange your viewing

- 3 Bedrooms
- Garage & Parking
- Garden
- Close to Amenities
- Close to Schools
- Gas Central Heating
- Available Now

Approximate Room Sizes

ENTRANCE HALL Double glazed window to side, door leading into:

LIVING ROOM 14' 11" x 14' 01" (4.55m x 4.29m) Double glazed window to front and further double glazed window to side, radiator, stairs ascending

KITCHEN/DINER 14' 10" x 9' 07" (4.52m x 2.92m) Two double glazed windows to rear, door leading to the garden. A range of wall and base units with work surfaces over incorporating stainless steel sink with drainer, freestanding oven with extractor over, space and plumbing for washing machine and dishwasher, space for fridge/freezer, radiator, wall mounted boiler.

LANDING

BEDROOM ONE 12' 05" x 10' 05" (3.78m x 3.18m) Double glazed window to front, radiator

BEDROOM TWO 11' 01" x 10' 0" (3.38m x 3.05m) Double glazed window to rear, radiator

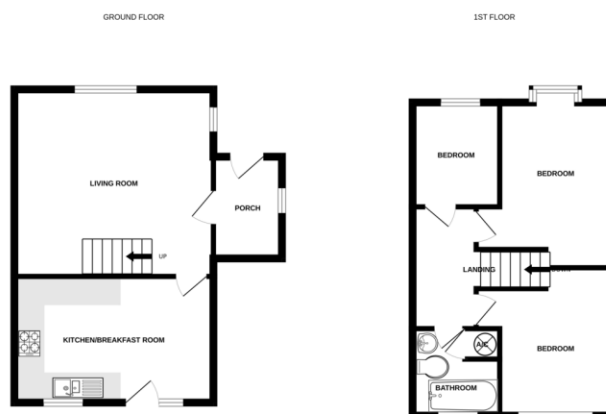
BEDROOM THREE 7' 10" x 6' 05" (2.39m x 1.96m) Double glazed window to front, radiator

BATHROOM Double glazed window to rear, panelled bath with electric shower over, W/C, pedestal wash hand basin, cupboard housing hot water cylinder

OUTSIDE Paved patio area, remainder of the garden is laid to lawn, gate access to side

Garage with parking.

Local Authority – West Suffolk Council
Council Tax Band – B
Post Code – IP32 6QP



Whilst every attempt has been made to ensure the accuracy of the floorplans contained herein, measurements of floor, window, doors and any other items are approximate and no responsibility is taken for any error, omission or misstatement. This plan is for illustrative purposes only and should be used as such by any prospective purchaser. The services, fixtures and fittings shown have not been tested and no guarantee is to be given in relation to the same.
Made with Metagen (2022)



Contact Details

6 The Traverse, Bury St Edmunds, IP33 1BJ

Tel: 01284 769598

Email: burystedmunds@bychoice.co.uk

EPC TO FOLLOW

Agents Note: Whilst every care has been taken to prepare these sales particulars, they are for guidance purposes only. All measurements are approximate and for general guidance purposes only and whilst every care has been taken to ensure their accuracy, they should not be relied upon and potential buyers are advised to recheck the measurements

