



dm^g
DAVID MARTIN
GROUP

Kelvedon Road
Tiptree, CO5 0LX

£550,000

EPC Rating 'TBC'

- Open Plan Kitchen/Family Room
- Study & Dining Room
- Dual Aspect Lounge
- Garage & Off Road Parking





Property Description

David Martin Estate Agents are delighted to offer for sale this BRAND NEW fantastic family home, THE MULBERRY situated in the popular village of Tiptree with its excellent range of shops, schools and local amenities and good access to the A12, featuring a stunning open-plan kitchen/family room with French doors leading to the garden and an impressive living room with French doors and bay window, a separate dining room, study, WC and storage cupboards throughout ensure it's practical as well as stylish. Upstairs you'll find four bedrooms, including a large bedroom one with an en suite and walk-in wardrobe, and a family-sized bathroom. Externally the property benefits from off road parking, a single garage, and an enclosed rear garden.



ENTRANCE HALL

LOUNGE

17' 04" x 10' 06" (5.28m x 3.2m)

DINING ROOM

11' 05" x 10' 04" (3.48m x 3.15m)

STUDY

11' 05" x 6' 08" (3.48m x 2.03m)

CLOAKROOM

KITCHEN

13' 04" x 8' 03" (4.06m x 2.51m)

FAMILY ROOM

13' 04" x 10' 02" (4.06m x 3.1m)

LANDING

BEDROOM ONE

13' 04" x 10' 06" (4.06m x 3.2m)

ENSUITE

BEDROOM TWO

15' 07" x 10' 09" (4.75m x 3.28m)

BEDROOM THREE

13' 03" x 11' 02" (4.04m x 3.4m)

BEDROOM FOUR

9' 03" x 8' 04" (2.82m x 2.54m)





Scarlett Mews
Phase 1



Our homes

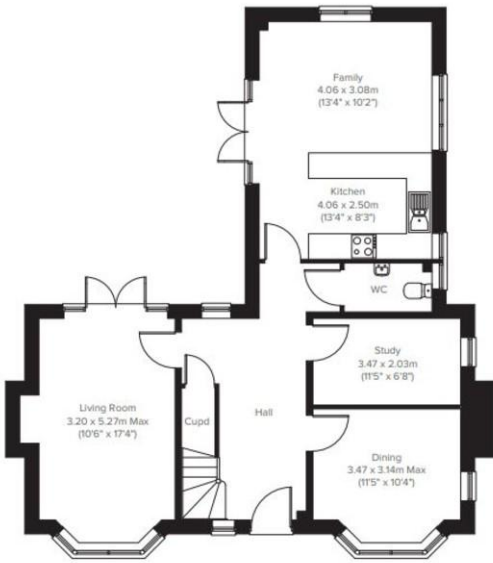
3 bedroom

- The Cumberland
- The Quince
- The Morello
- The Medler

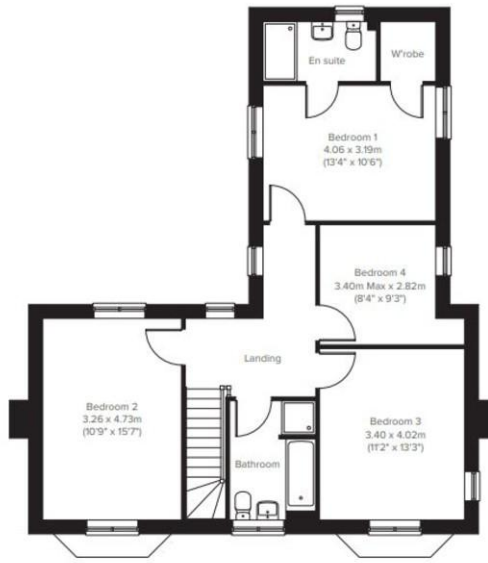
4 bedroom

- The Damson
- The Maypole
- The St Clement
- The Mulberry

Affordable Housing



Ground Floor



First Floor



David Martin
35a Church Road
Tiptree
Colchester
Essex

www.dmgtiptree.co.uk
%office_emailAddress%
01621 815815

Agents Note: Whilst every care has been taken to prepare these sales particulars, they are for guidance purposes only. All measurements are approximate are for general guidance purposes only and whilst every care has been taken to ensure their accuracy, they should not be relied upon and potential buyers are advised to recheck the measurements