



10 Ballater Close, Watford, Hertfordshire, WD19 6HX

Guide price £400,000 Freehold

sewell &
gardner

About the property

A three bedroom terraced house with the added benefit of no upper chain situated on a popular residential road in South Oxhey.

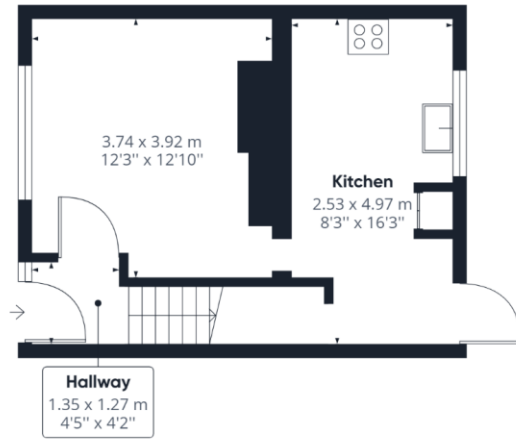
The property is offered to the market in need of modernisation throughout and therefore offers someone the opportunity to really make it their own.

On the ground floor you will find a front reception room leading into a kitchen/breakfast room at the rear. On the first floor are three bedrooms, bathroom and separate WC. There is a garden to the rear which is mainly laid to lawn.

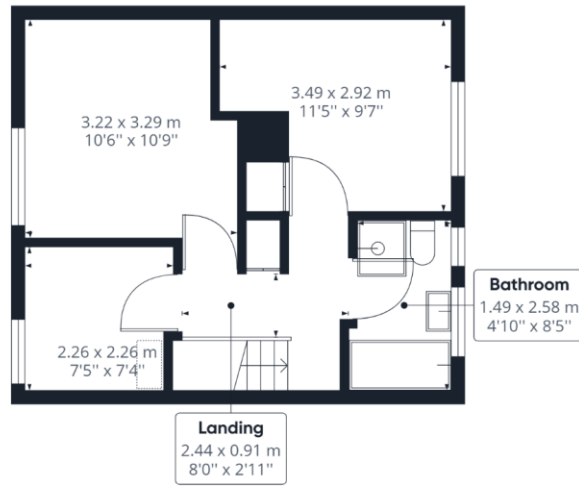
Call now to book a viewing.



- Three bedrooms
- Close to local shops
- Cul de sac location
- Scope to make your own
- Kitchen/breakfast room
- No upper chain



Floor 0



Floor 1

Approximate total area⁽¹⁾

62.18 m²
669.32 ft²

(1) Excluding balconies and terraces

While every attempt has been made to ensure accuracy, all measurements are approximate, not to scale. This floor plan is for illustrative purposes only.

GIRAFFE 360

To view this property, contact us on-

T: 01923 776400 E: ricky@sewellgardner.com

165-167 High Street, Rickmansworth, WD3 1AY



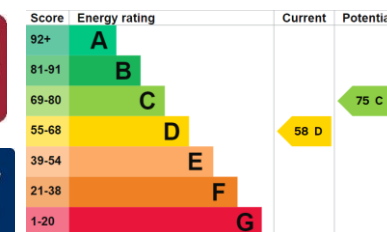
Area Information

Watford is a desirable location for many as it offers an ideal balance of urban and rural living. With a vibrant town centre and excellent transport links into London combined with plenty of green space, Watford offers the best of both worlds.

Watford Town Centre has a variety of entertainment and retail options, including a big shopping centre, large Cineworld Imax cinema and a vibrant restaurant hub. There are also various sports facilities including golf, football, tennis and cricket and many leisure & health clubs close by. Notably, Watford is home to one of England's most luxurious golf courses at The Grove, Chandlers Cross. Watford is surrounded by some beautiful countryside with many locations to enjoy walking and cycling. Cassiobury Park is a popular attraction, being the largest public open space in Watford with over 190 acres of green space catering for all ages, including sports facilities, kids' attractions & a nature reserve.

Local Authority: Three Rivers
 Council Tax: Band C
 Approximate floor area: 669sqft
 Tenure: Freehold

Nearest Station: 0.6 miles to Carpenders Park Station
 Distance to Town Centre: 2.2 miles to Watford
 Nearest Motorway: 4.8 miles to M1



Every care has been taken to ensure that the details in this brochure represent an accurate description of the property. However, we wish to inform prospective purchasers that these sales particulars are a general guide and none of the statements or dimensions should be relied upon as statements of representation or fact. Transparency of referral fees: We're legally required to inform you that we receive referral income from the following solicitors and surveyors up to the value of £125.00 per transaction; Archer Rusby Solicitors LLP, Taylor Walton Solicitors, Hanney Dawkins & Jones Solicitors, New Homes Law, Edwards Willoby & Loch, Woodward Surveyors & Trend & Thomas Surveyors. For financial services we recommend Severn Financial from which we don't take a referral fee but one of our directors does have a vested interest in the business. We also recommend Meridian Mortgages and receive an average referral income of £288.40 per transaction. Although we recommend these companies because we believe they offer an excellent service, you are not under any obligation to use them.

