

THE LEAT



Apartment details and floorplans V1.1 November 2016

THE LEAT

Ground floor site plan



THE LEAT

First floor site plan



THE LEAT

Second floor site plan



THE LEAT

1 Falcon House

Ground Floor/21sqm £ 210 pw

Private front door from secure gated courtyard

Built in Banquette seating with cushions and occasional table

Built in desk with study chair

En-suite bathroom with large shower

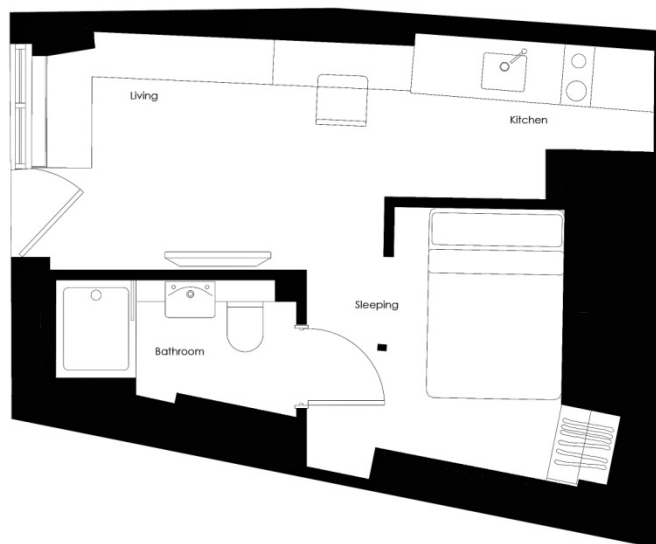
Separate bedroom zone with double bed and built in wardrobe

Contemporary kitchen with full size oven; electric double hob; fridge with icebox and extractor

40" smart tv (tv licence not included)

Central heating and instant hot water

Couple occupancy by arrangement



THE LEAT

2 Falcon House

Ground Floor/32sqm £250 pw

Own entrance Lobby

Generous contemporary sofa and occasional table

Separate study area with built in double desk with large storage shelf and study chair

En-suite bathroom with large shower

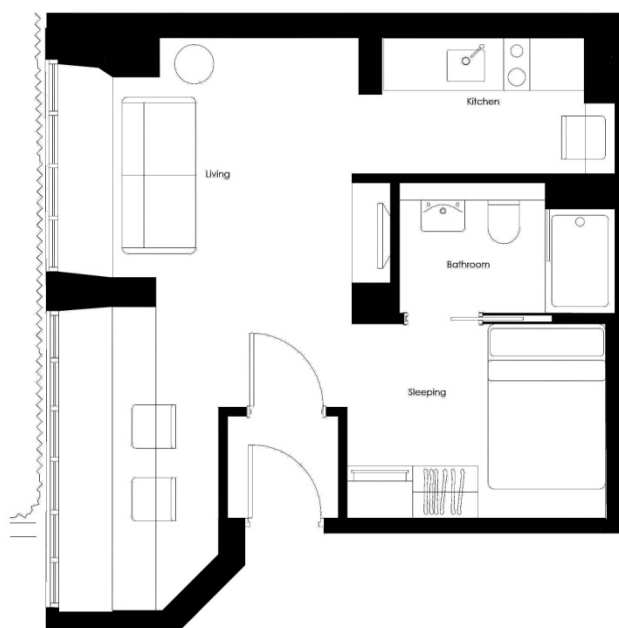
Separate bedroom zone with double bed and built in wardrobe

Contemporary kitchen with full size oven; electric double hob; fridge with icebox and extractor

40" smart tv (tv licence not included)

Central heating and instant hot water

Couple occupancy by arrangement



THE LEAT

3 Falcon House First Floor/30sqm £240 pw

Own entrance lobby

Generous contemporary sofa and occasional table

Built in desk with built in shelving and study chair

40" smart tv (tv licence not included)

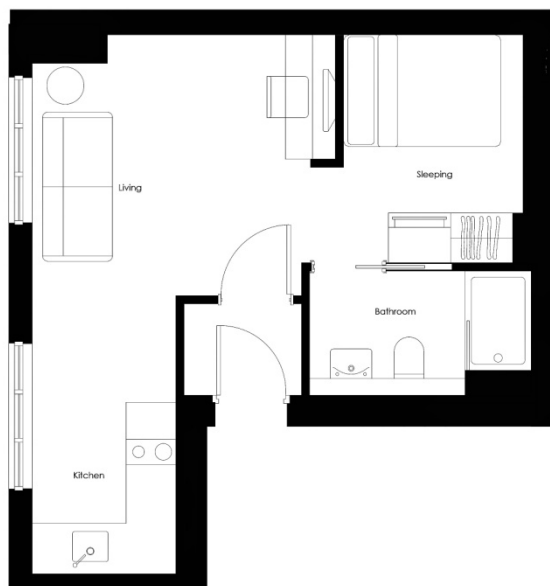
Separate bedroom zone with double bed and built in wardrobe

En-suite bathroom with Shower

Large L-shaped Contemporary kitchen with full size oven; electric double hob; fridge with icebox and extractor

Central heating and instant hot water

Couple occupancy by arrangement



THE LEAT

5 Falcon House

Second Floor Penthouse/42sqm

£ 270 pw

Own entrance lobby

Generous contemporary sofa, easy chair and occasional table

Discreet study area with large built in desk and study chair

40" smart tv (tv licence not included)

Separate bedroom zone with double bed and built in wardrobe

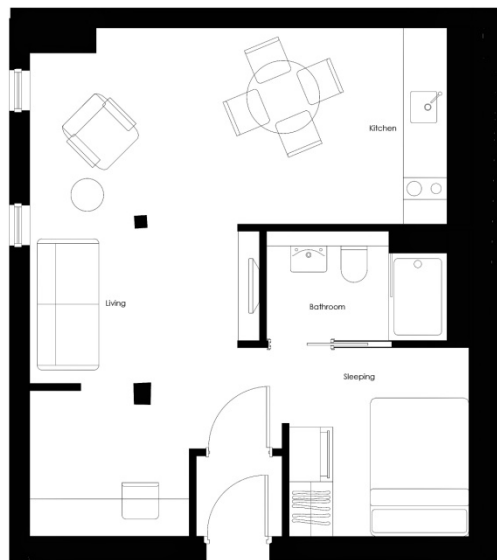
En-suite bathroom with Shower

Dining table with chairs

Large Contemporary kitchen with full size oven; electric double hob; fridge with icebox and extractor

Central heating and instant hot water

Couple occupancy by arrangement



THE LEAT

6 Harrier House

Ground floor/27sqm

£240 pw

Own Entrance lobby

Freestanding shelving unit

Generous contemporary sofa and occasional table

Built in desk and study chair

40" smart tv (tv licence not included)

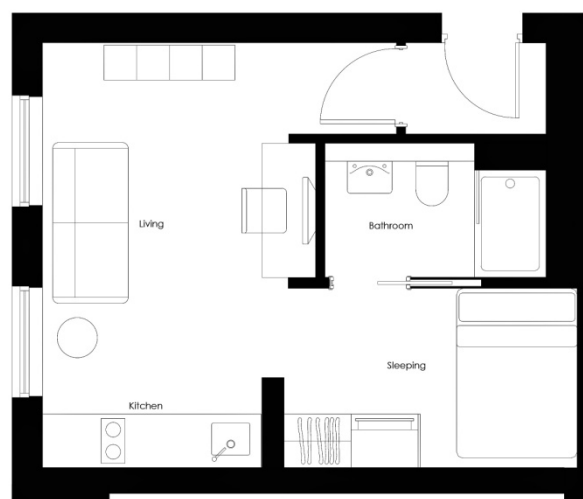
Separate bedroom zone with double bed and built in wardrobe

En-suite bathroom with Shower

Contemporary kitchen with full size oven; electric double hob; fridge with icebox and extractor

Central heating and instant hot water

Couple occupancy by arrangement



THE LEAT

7 Harrier House

Ground floor/27sqm £240 pw

Own entrance lobby

Back door leading to Leat deck sitting space

Generous contemporary sofa and occasional table

Built in desk and study chair

40" smart tv (tv licence not included)

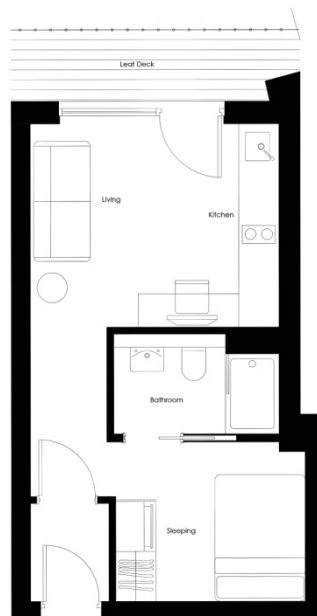
Separate bedroom zone with double bed and built in wardrobe

En-suite bathroom with large shower

Large contemporary kitchen with full size oven; electric double hob; fridge with icebox and extractor

Central heating and instant hot water

Couple occupancy by arrangement



THE LEAT

8, Harrier House Ground floor/30sqm £ 240 pw

Private front door from the Leat decking

Generous contemporary sofa and occasional table

Built in desk and study chair

Built in bookcase

40" smart tv (tv licence not included)

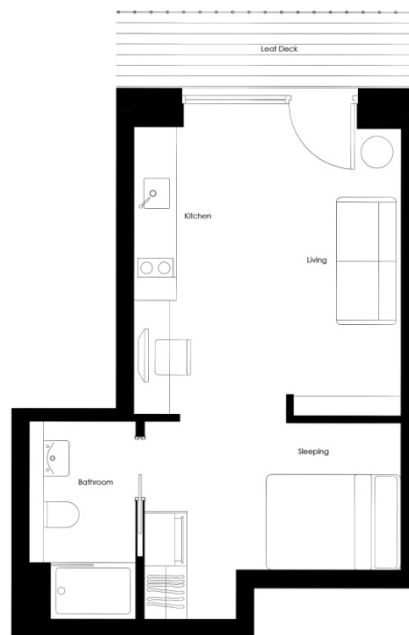
Separate bedroom zone with double bed, bedside table and built in wardrobe

En-suite bathroom with Shower

Contemporary kitchen with full size oven; electric double hob; fridge with icebox and extractor

Central heating and instant hot water

Couple occupancy by arrangement



THE LEAT

9 Harrier House

Ground floor/26sqm

£ 230 pw

Private entrance from communal gardens

Dual aspect apartment

Generous contemporary sofa and occasional table

Built in desk and study chair

Built in bookcase

40" smart tv (tv licence not included)

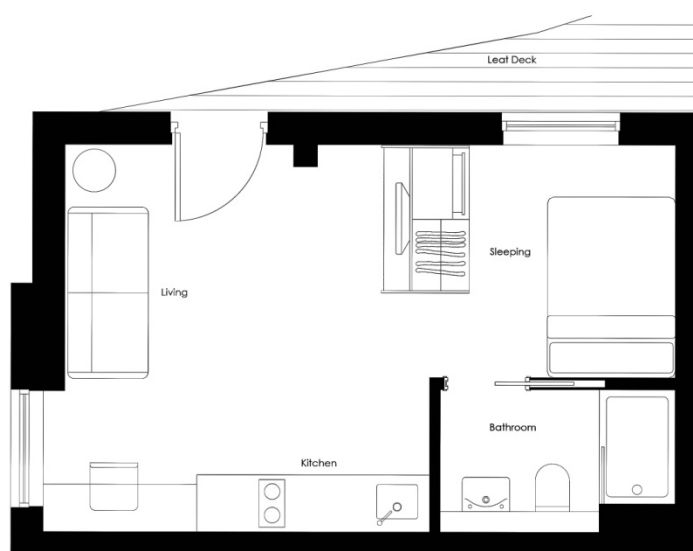
Separate bedroom zone with double bed and built in wardrobe

En-suite bathroom with Shower

Contemporary kitchen with full size oven; electric double hob; fridge with icebox and extractor

Central heating and instant hot water

Couple occupancy by arrangement



THE LEAT

10 Harrier House

Ground floor/25sqm

£ 230 pw

Private entrance from communal gardens

Dual aspect apartment

Generous contemporary sofa and occasional table

Large built in desk and study chair

40" smart tv (tv licence not included)

Separate bedroom zone with double bed and built in wardrobe

En-suite bathroom with Shower

Contemporary kitchen with full size oven; electric double hob; fridge with icebox and extractor

Central heating and instant hot water

Couple occupancy by arrangement



THE LEAT

11 Harrier House

First floor/27sqm

£ 240 pw

Own Entrance lobby

Freestanding shelving unit

Generous contemporary sofa and occasional table

Built in desk and study chair

40" smart tv (tv licence not included)

Separate bedroom zone with double bed and built in wardrobe

En-suite bathroom with Shower

Contemporary kitchen with full size oven; electric double hob; fridge with icebox and extractor

Central heating and instant hot water

Couple occupancy by arrangement



THE LEAT

12 Harrier House

First floor/27sqm £ 240 pw

Own entrance Lobby

Generous contemporary sofa and occasional table

Built in desk and study chair

40" smart tv (tv licence not included)

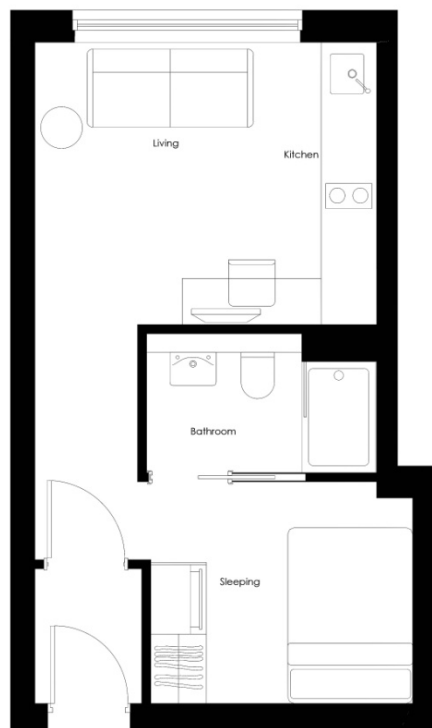
Separate bedroom zone with double bed and built in wardrobe

En-suite bathroom with Shower

Large contemporary kitchen with full size oven; electric double hob; fridge with icebox and extractor

Central heating and instant hot water

Couple occupancy by arrangement



THE LEAT

15 Harrier House

First floor/24sqm

£ 230 pw

Front door with hallway

Dual aspect

Generous contemporary sofa and occasional table

Built in desk and study chair

Built in bookcase

40" smart tv (tv licence not included)

Separate bedroom zone with double bed and built in wardrobe

En-suite bathroom with Shower

Contemporary kitchen with full size oven; electric double hob; fridge with icebox and extractor

Central heating and instant hot water

Couple occupancy by arrangement



THE LEAT

16 Harrier House

First floor/24sqm

£ 230 pw

Front door into open plan living space

Generous contemporary sofa and occasional table

Built in desk with built in bookcase and study chair

40" smart tv (tv licence not included)

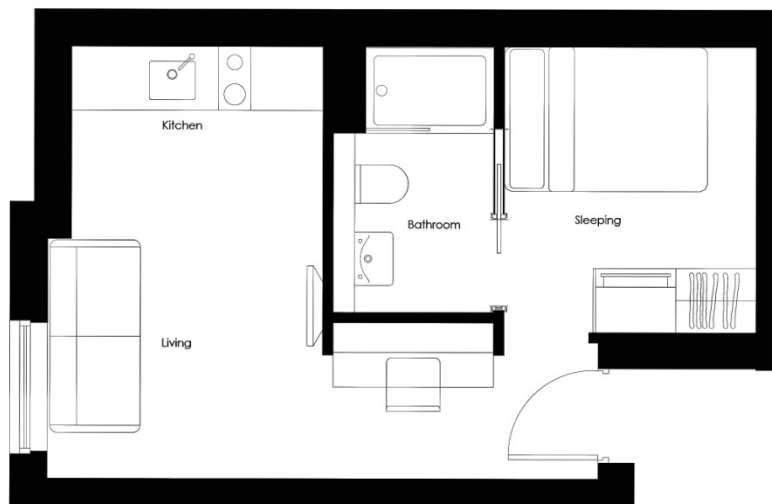
Separate bedroom zone with double bed and built in wardrobe

En-suite bathroom with Shower

Contemporary kitchen with full size oven; electric double hob; fridge with icebox and extractor

Central heating and instant hot water

Couple occupancy by arrangement



THE LEAT

17 Harrier House

First floor/26sqm

£ 230 pw

Front door into small hallway

Built in desk with built in bookcase and study chair

Generous contemporary sofa and occasional table

40" smart tv (tv licence not included)

Separate bedroom zone with double bed and built in wardrobe

En-suite bathroom with Shower

Large contemporary kitchen with full size oven; electric double hob; fridge with icebox and extractor

Central heating and instant hot water

Couple occupancy by arrangement



THE LEAT

18 Harrier House

Second floor/27sqm

£ 240 pw

Own entrance lobby

Freestanding shelving unit

Generous contemporary sofa and occasional table

Built in desk with built in bookcase and study chair

40" smart tv (tv licence not included)

Separate bedroom zone with double bed and built in wardrobe

En-suite bathroom with Shower

Contemporary kitchen with full size oven; electric double hob; fridge with icebox and extractor

Central heating and instant hot water

Couple occupancy by arrangement



THE LEAT

19 Harrier House

Second floor/25sqm

£ 240 pw

Front door into open plan living space

Generous contemporary sofa and occasional table

Large desk and study chair

Built in bookcase

40" smart tv (tv licence not included)

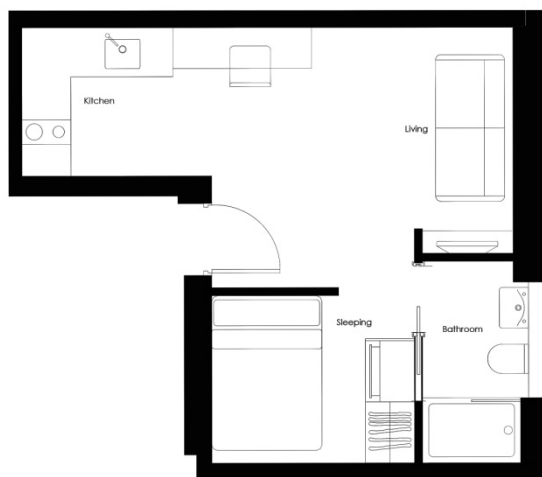
Separate bedroom zone with double bed and built in wardrobe

En-suite bathroom with Shower

L shaped contemporary kitchen with full size oven; electric double hob; fridge with icebox and extractor

Central heating and instant hot water

Couple occupancy by arrangement



THE LEAT

20 Harrier House

Second floor/31sqm

£ 240 pw

Front door into own hallway

Generous contemporary sofa and occasional table

Large built in desk and study chair

40" smart tv (tv licence not included)

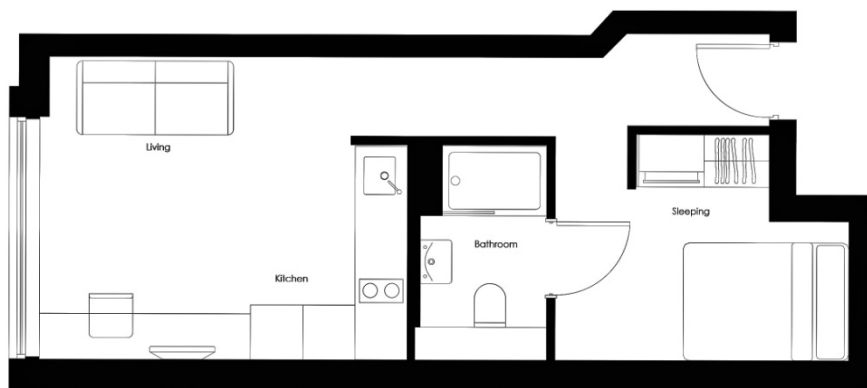
Separate bedroom zone with double bed and built in wardrobe

En-suite bathroom with large shower

Larger contemporary L shaped kitchen with full size oven; electric double hob; fridge with icebox and extractor

Central heating and instant hot water

Couple occupancy by arrangement



THE LEAT

21 Harrier House

Second floor/28sqm

£ 240 pw

Front door into own hallway

Generous contemporary sofa and occasional table

Large built in desk and study chair

40" smart tv (tv licence not included)

Separate bedroom zone with double bed and built in wardrobe

En-suite bathroom with large shower

Large contemporary L shaped kitchen with full size oven; electric double hob; fridge with icebox and extractor

Central heating and instant hot water

Couple occupancy by arrangement



THE LEAT

22 Griffon House

Ground floor/29sqm

£ 240 pw

Front door into open plan living space

Dual aspect

Exterior door leading to private terrace garden

Generous contemporary sofa and occasional table

Built in desk and study chair

40" smart tv (tv licence not included)

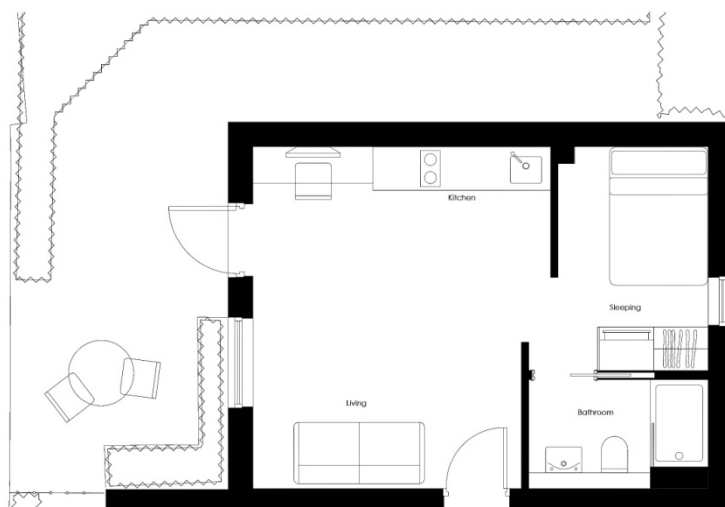
Separate bedroom zone with double bed and built in wardrobe

En-suite bathroom with large shower

Contemporary kitchen with full size oven; electric double hob; fridge with icebox and extractor

Central heating and instant hot water

Couple occupancy by arrangement



THE LEAT

23 Griffon House

Ground floor/25sqm

£ 240 pw

Front door into small hallway

Exterior door leading to private terrace garden

Generous contemporary sofa and occasional table

Built in desk with built in bookcase and study chair

40" smart tv (tv licence not included)

Separate bedroom zone with double bed and built in wardrobe

En-suite bathroom with large shower

Contemporary kitchen with full size oven; electric double hob; fridge with icebox and extractor

Central heating and instant hot water

Couple occupancy by arrangement



THE LEAT

25 Griffon House

Ground floor/25sqm £ 230 pw

Front door into small hallway

Generous contemporary sofa and occasional table

Built in desk with built in bookcase and study chair

40" smart tv (tv licence not included)

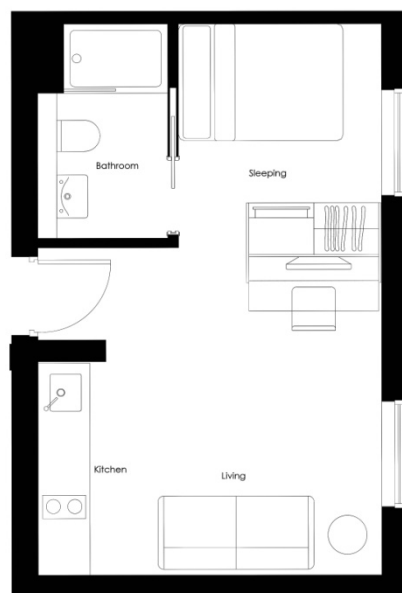
Separate bedroom zone with double bed and built in wardrobe

En-suite bathroom with large shower

Contemporary kitchen with full size oven; electric double hob; fridge with icebox and extractor

Central heating and instant hot water

Couple occupancy by arrangement



THE LEAT

26 Griffon House

Ground floor/27sqm

£ 240 pw

Level wheelchair access & disabled parking space in the courtyard

Front door into open plan living space

Exterior back door to private terrace garden

Generous contemporary sofa

Desk and study chair

Built in bookcase

40" smart tv (tv licence not included)

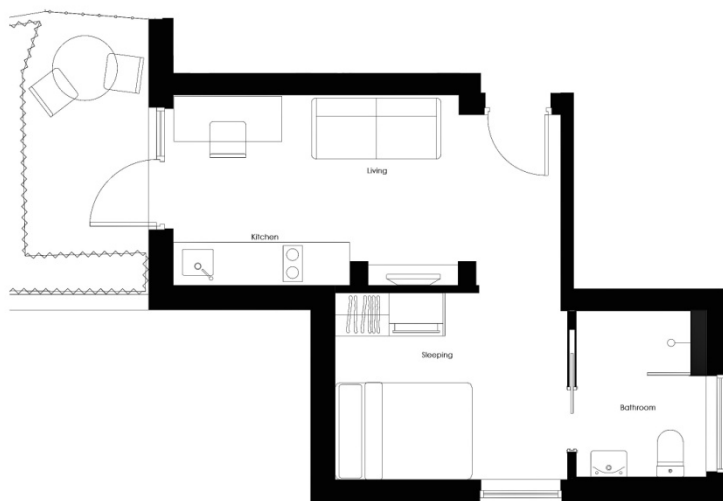
Separate bedroom zone with double bed and built in wardrobe

Accessible en-suite bathroom with large shower

Contemporary kitchen with full size oven; electric double hob; fridge with icebox and extractor

Central heating and instant hot water

Couple occupancy by arrangement



THE LEAT

27 Griffon House

First floor/29sqm

£ 230 pw

Own entrance lobby

Dual aspect

Generous contemporary sofa and occasional table

Built in desk and study chair

40" smart tv (tv licence not included)

Separate bedroom zone with double bed and built in wardrobe

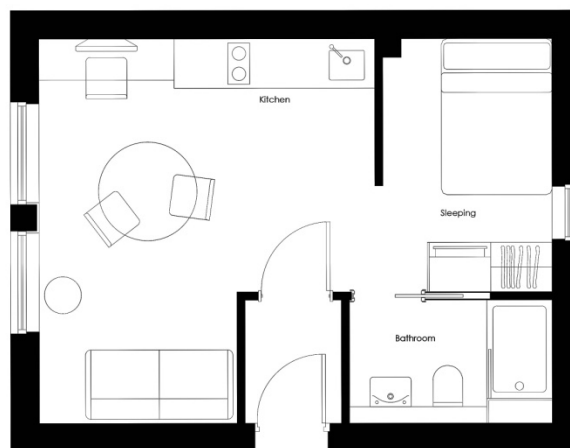
En-suite bathroom with large shower

Dining table with chairs

Contemporary kitchen with full size oven; electric double hob; fridge with icebox and extractor

Central heating and instant hot water

Couple occupancy by arrangement



THE LEAT

28 Griffon House

First floor/25sqm

£ 230 pw

Front door into open plan living space

Generous contemporary sofa and occasional table

Built in desk with built in bookcase and study chair

40" smart tv (tv licence not included)

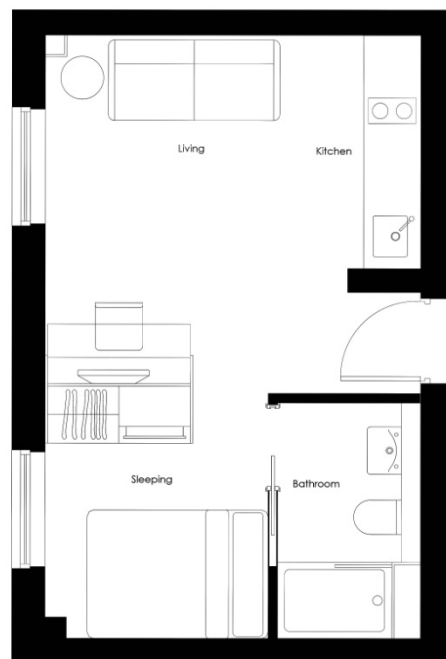
Separate bedroom zone with double bed and built in wardrobe

En-suite bathroom with large shower

Contemporary kitchen with full size oven; electric double hob; fridge with icebox and extractor

Central heating and instant hot water

Couple occupancy by arrangement



THE LEAT

29 Griffon House

First floor/ 25sqm

£230 pw

Front door into open plan living space

Generous contemporary sofa and occasional table

Built in desk with built in bookcase and study chair

40" smart tv (tv licence not included)

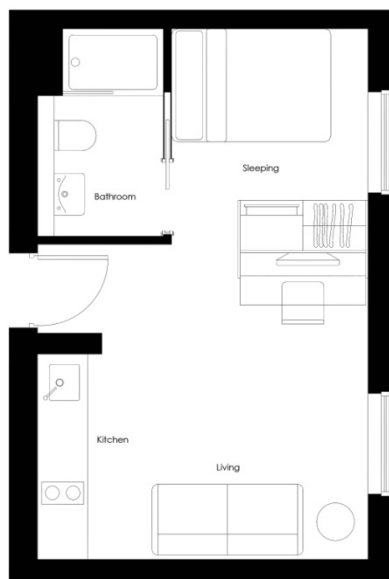
Separate bedroom zone with double bed and built in wardrobe

En-suite bathroom with large shower

Contemporary kitchen with full size oven; electric double hob; fridge with icebox and extractor

Central heating and instant hot water

Couple occupancy by arrangement



THE LEAT

30 Griffon House

First floor/27sqm

£ 230 pw

Front door into open plan living space

Dual aspect

Generous contemporary sofa

Desk and study chair

Built in bookcase

40" smart tv (tv licence not included)

Separate bedroom zone with double bed and built in wardrobe

En-suite bathroom with large shower

Contemporary kitchen with full size oven; electric double hob; fridge with icebox and extractor

Central heating and instant hot water

Couple occupancy by arrangement



THE LEAT

31 Griffon House

Second floor penthouse/53sqm

£ 290 pw

Large entrance lobby into penthouse apartment

Dual aspect with multiple skylights

x2 Generous contemporary sofas with occasional tables

40" smart tv (tv licence not included)

Round dining table with 4 chairs

Discreet study area with large desk and study chair

Separate bedroom with large double bed, bedside tables and large built in wardrobe

En-suite bathroom with large shower

Extra long contemporary kitchen with full size oven; 4 ring electric hob; fridge with icebox and extractor

Central heating and instant hot water

Couple occupancy by arrangement

