




Andrew Pearce
PINNER

THE DRIVE, RICKMANSWORTH, HERTFORDSHIRE WD3 4DU



This magnificent and well-maintained five bedroom gated family home is presented in a contemporary style and offers 4,319 sqft of flexible and spacious living space.

The inviting entrance hall leads to three reception rooms, one of which has a fireplace and bifold doors that open to the terrace/balcony. The kitchen/ breakfast/family room is spacious and modern, with plenty of kitchen units, integrated appliances and a central island/breakfast bar. It also has bi-fold doors that lead to the patio and a large area for dining and relaxing. There is a separate dining room, a utility room and two guest cloakrooms.

The outstanding Principal Bedroom suite features a dressing area and an en-suite bathroom with dual sinks, a bathtub and a separate shower. There are two more bedroom suites, each with a dressing area and an en-suite shower room, as well as a guest bedroom with en-suite and a fifth bedroom. There is also a modern family bathroom.

The property is accessed through an electric gate, with a driveway that leads to the double garage and offers parking space for several vehicles. The rear garden is landscaped and has a patio and a lawn.

This impressive property also boasts underfloor heating and other additional features.

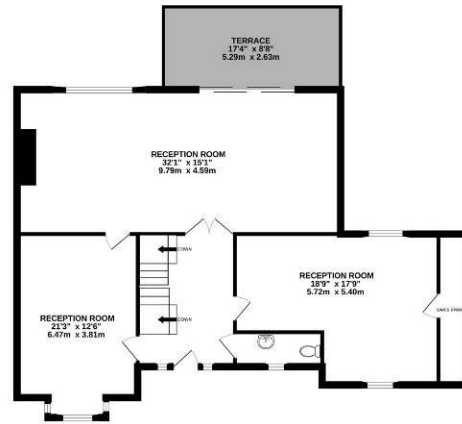
Rickmansworth town centre has a variety of boutique shops, coffee houses, restaurants and major supermarkets. The Metropolitan and Chiltern line trains connect you to London Baker Street, Marylebone Station and beyond. The M25 motorway is accessible at junction 17 and 18, connecting you to the national motorway network. Major London airports are within easy reach. The area has many good private and state schools for all ages. Chorleywood and Rickmansworth have many sporting opportunities for rugby, cricket, football, tennis, horse riding and golf. Rickmansworth Aquadrome is a great place for walks, sailing, fishing and water-skiing.



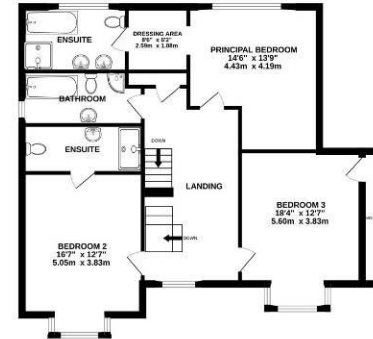
LOWER GROUND FLOOR
1466 sq.ft. (136.2 sq.m.) approx.



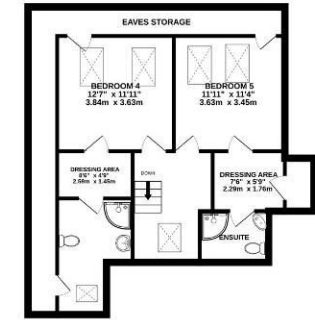
GROUND FLOOR
1208 sq.ft. (112.3 sq.m.) approx.



1ST FLOOR
1043 sq.ft. (96.9 sq.m.) approx.



2ND FLOOR
754 sq.ft. (70.0 sq.m.) approx.



TOTAL FLOOR AREA : 4370sq.ft. (406.0 sq.m.) approx.

Whilst every attempt has been made to ensure the accuracy of the floorplan contained here, measurements of doors, windows, rooms and any other items are approximate and no responsibility is taken for any error, omission or mis-statement. This plan is for illustrative purposes only and should be used as such by any prospective purchaser. The services, systems and appliances shown have not been tested and no guarantee as to their operability or efficiency can be given.

Made with Metropix ©2023



