

LAST TWO FLOORS REMAINING

88GOSWELLROAD.LONDON

88

GOSWELL RD

CLERKENWELL EC1

PREMIUM, NEWLY REFURBISHED OFFICE SPACE  
WITH PRIVATE TERRACE TO LET

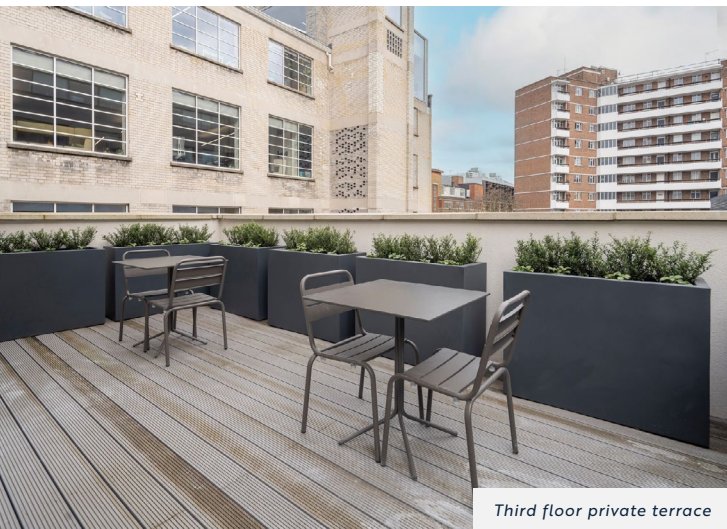
---

THIRD FLOOR // 738 SQ FT  
FOURTH FLOOR // 734 SQ FT



# A characterful office building in a prime location

Positioned in the heart of Clerkenwell, just a short distance from some of the top hotels and restaurants the capital has to offer. This self-contained building is situated in a first class location, a magnet for those in the creative, fashion and tech sectors.



Third floor private terrace



Fully fitted fourth floor



Close to Old Street,  
Farringdon and  
Barbican Stations.

The transformation of Old Street roundabout (above) will include a pedestrianised area and a cycle friendly environment. A new station entrance will offer greater access to this popular area.





# The heart of London's most vibrant district

The place is enriched with a multitude  
of cafés, restaurants and street food.

If you're looking for diversity then it  
doesn't get much better than here,  
with huge cultural influences from  
across the globe.



An eclectic mix of cool  
bars, markets, fashion  
and galleries.

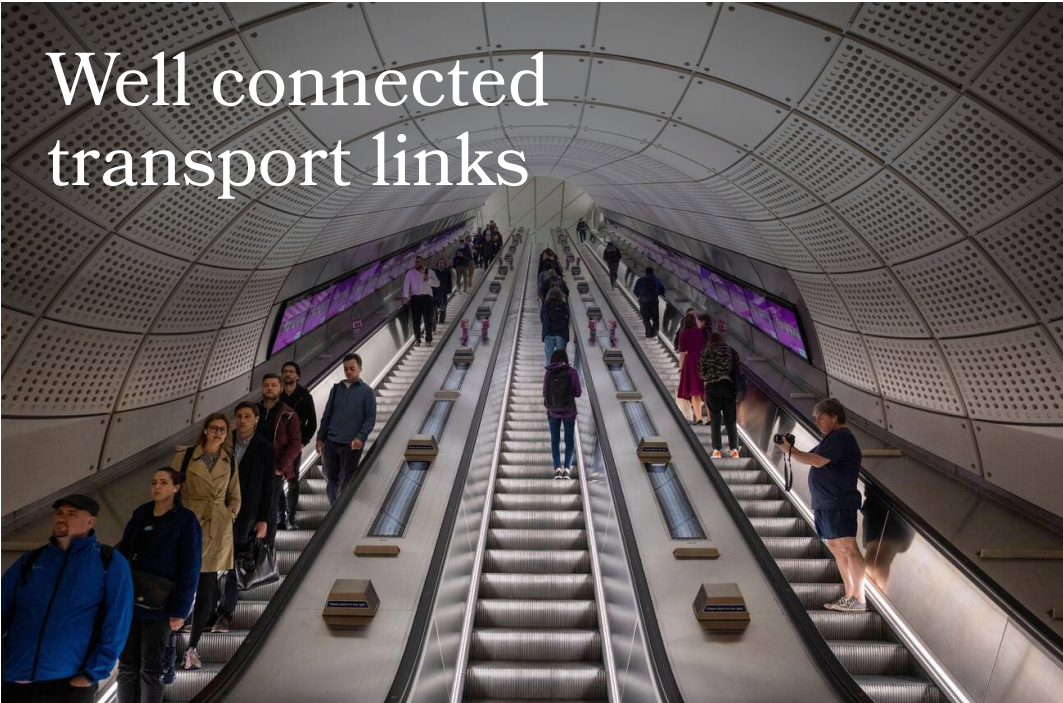


# Something for everyone

- |              |                  |                             |
|--------------|------------------|-----------------------------|
| Eateries     | 01               | St John                     |
|              | 02               | Granger & Co.               |
|              | 03               | Compton                     |
|              | 04               | Bleeding Heart              |
|              | 05               | Breddos Tacos               |
|              | 06               | The Peasant                 |
|              | 07               | Bourne & Hollingsworth      |
|              | 08               | The Eagle                   |
|              | 09               | Smith's of Smithfield       |
|              | 10               | Kennedy's of Goswell Rd.    |
|              | 11               | Vivat Bacchus               |
|              | 12               | The Jugged Hare             |
|              | 13               | Pham Sushi                  |
|              | 14               | Palantino                   |
|              | 15               | Coin Laundry                |
|              | 16               | Fare Bar & Canteen          |
|              | 17               | Bone Daddies                |
|              | 18               | Lilienblum                  |
|              | 19               | Ceviche                     |
|              | 20               | Luca                        |
|              | 21               | Whitecross Street Market    |
| Bars & Cafés | 22               | The Fence                   |
|              | 23               | The Slaughtered Lamb        |
|              | 24               | Goswell Rd. Coffee          |
|              | 25               | Oriole Bar                  |
|              | 26               | The Pianoworks              |
|              | Lifestyle        | 27                          |
| 28           |                  | Golden Lane Sport & Fitness |
| 29           |                  | The Brewery                 |
| 30           |                  | The Charterhouse            |
| 31           |                  | Virgin Active               |
| 32           |                  | City Sport                  |
| 33           |                  | PureGym St. Pauls           |
| 34           | Barbican Cinema  |                             |
| Hotels       | 35               | The Zetter Townhouse        |
|              | 36               | Malmaison Hotel             |
|              | 37               | The Rookery                 |
|              | 38               | The Fox & Anchor            |
| Culture      | 39               | The Barbican Centre         |
|              | 40               | Museum of London            |
|              | 41               | Exmouth Market              |
|              | 42               | Leather Lane Market         |
|              | 43               | Smithfield Market           |
|              | 44               | Clerkenwell Gallery         |
| 45           | Islington Museum |                             |







# Well connected transport links



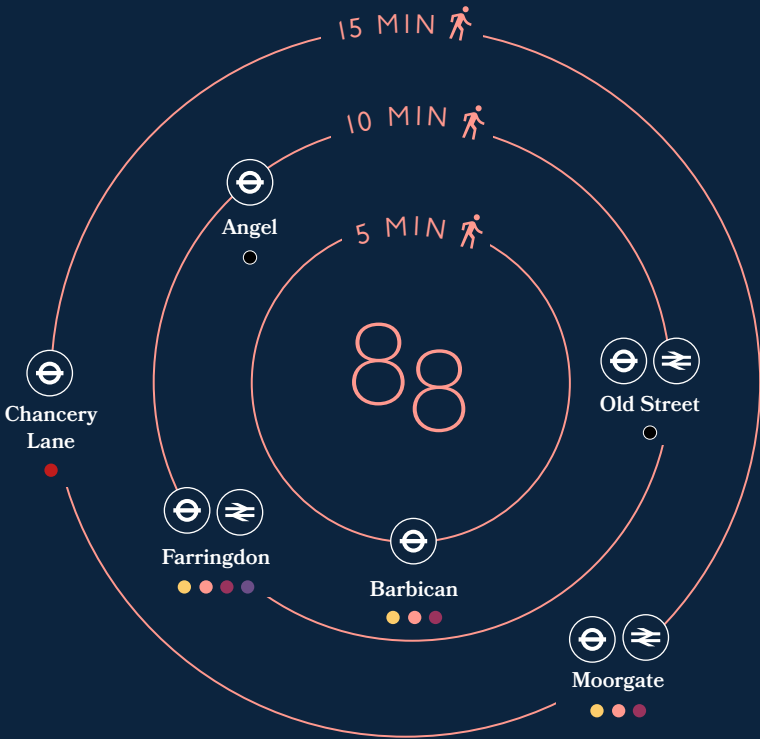
## Travel times from Farringdon

Liverpool St.	02 mins	●
King's Cross	06 mins	●
Paddington	08 mins	●
Canary Wharf	08 mins	●
Finsbury Park	11 mins	≡
Stratford	14 mins	●
Heathrow	31 mins	●
Gatwick	46 mins	≡



Excellent local bus routes, cycle paths and both National Rail and Underground services within easy walking distance.

Crossrail's new Elizabeth Line at Farringdon Station cuts through central London from East to West. Stopping at 41 stations, serving around 200 million commuters each year.







# Unique office space with subtle design features

Each floor offers something different with glimpses of original building features. The third floor benefits from an exclusive private terrace.

The third and fourth floors can also be offered as a self-contained duplex suite with its own staircase.



Fourth floor



Fourth floor



	OFFICE		TERRACE		Status
	Sq Ft	Sq M	Sq Ft	Sq M	
Fourth	734	68.2	-	-	AVAILABLE
Third	738	68.6	241	22.4	AVAILABLE
Second	-	-	-	-	LET
First (fully fitted)	-	-	-	-	LET
Ground	-	-	-	-	LET
Lower Ground	-	-	-	-	LET
TOTAL	1,472	136.8	241	22.4	

# Features & specification



Private terrace  
on third floor



Showers + lockers



Bike racks



New LG VRF air  
conditioning systems



Fully fitted  
office space



High speed fibre  
internet



LED lighting  
throughout

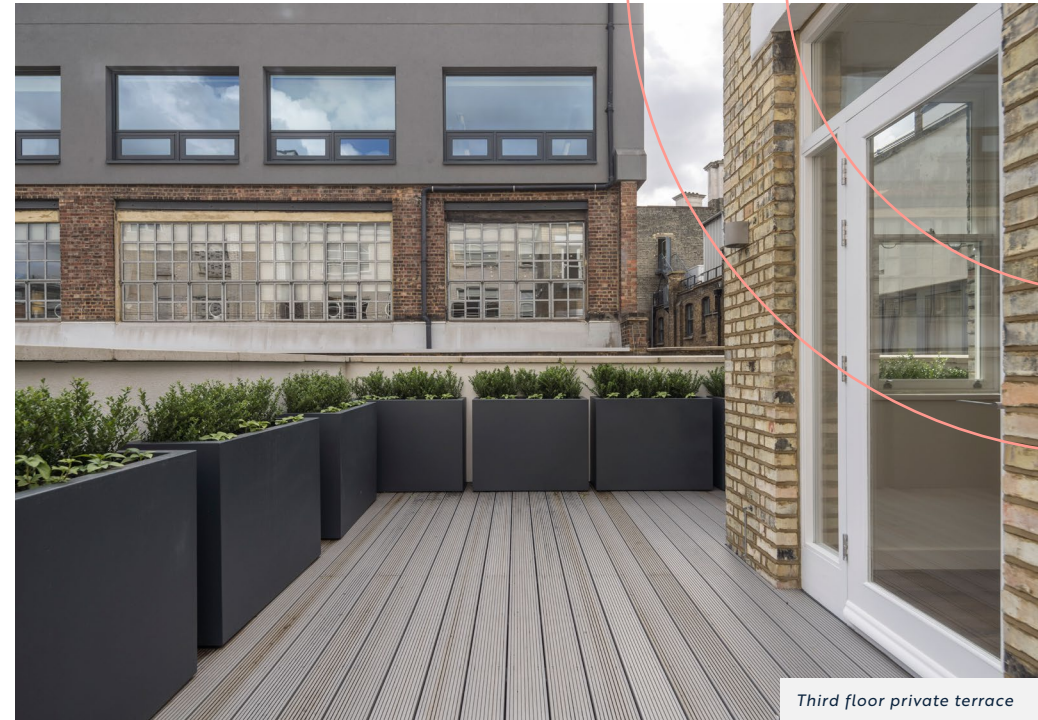


EPC rating: B

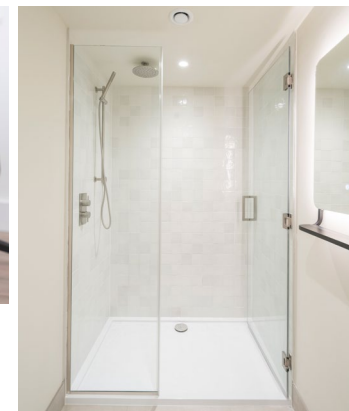


Demised WCs  
for all units

88 Goswell Road provides an excellent opportunity for start-ups and global brands. The newly refurbished environment promotes flexibility with modern design and a high spec fit-out.



Third floor private terrace



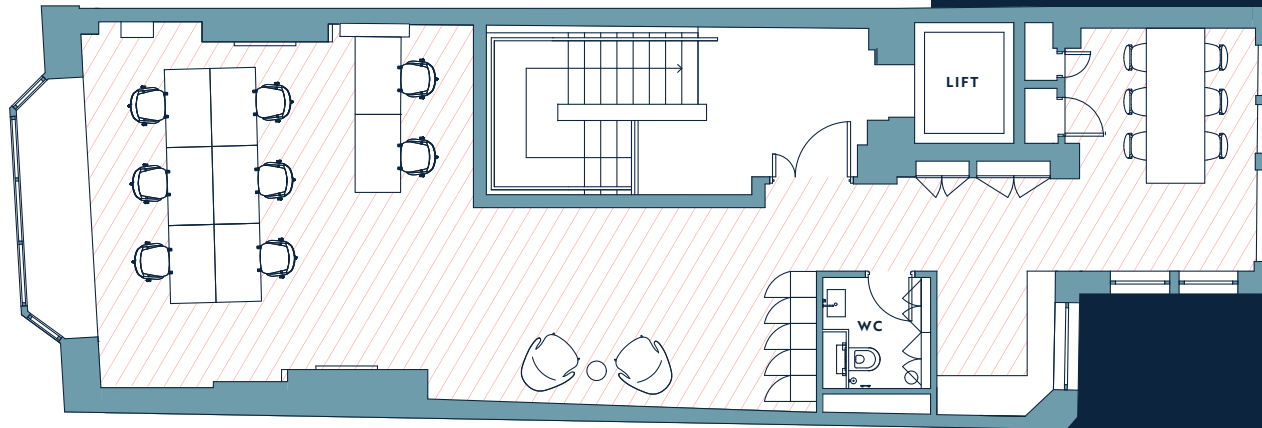


# Fully fitted floors

4

## — *fourth*

Office NIA 734 sq ft // 68.2 sq m

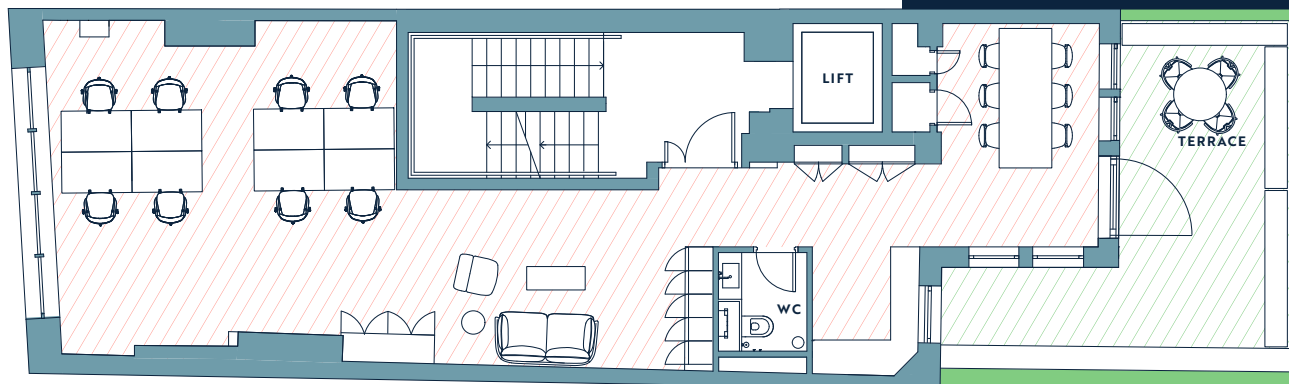


- 8 desks
- 6 person meeting room
- Breakout area
- Kitchenette
- WC

3

## — *third*

Office NIA 738 sq ft // 68.6 sq m | Terrace NIA 241 sq ft // 22.4 sq m



- 8 desks
- 6 persons meeting room
- Breakout area
- Private terrace
- Kitchenette
- WC



88 GOSWELL RD  
CLERKENWELL EC1

88GOSWELLROAD.LONDON



**Elliott Stern**  
es@compton.london  
T: 020 7101 2020  
M: 07834 918 700

**Alex Sugar**  
as@compton.london  
T: 020 7101 2020  
M: 07585 793 379

**Susskind.**

**Adam Noble**  
adam@susskind.london  
T: 020 7831 8311  
M: 07980 991 217

**Elle Whayman**  
elle@susskind.london  
T: 020 7831 8311  
M: 07791 785 253

ARCHITECTS ANOMALY.LONDON

ANOMALY

Compton and Susskind hereby give notice that the information provided either for itself, for any joint agents or for the vendors lessors of this property whose agent Compton and Susskind are in this brochure is provided on the following conditions: 1) The particulars are set out as a general outline only, for the guidance of intending purchasers and/or lessees and do not constitute an offer or contract, or part of an offer or contract. 2) All descriptions, dimensions and references to this property's condition and any necessary permission for use and occupation, and any other relevant details, are given in good faith and are believed to be correct. However, any intending purchasers or tenants should not rely on them as statements or representations of fact but satisfy themselves of their correctness by inspection or otherwise. 3) No person in the employment of Compton, Susskind or any joint agents, has any authority to make or give any representation or warranty whatsoever in relation to the property or properties in this brochure. 4) All prices quoted are exclusive of VAT. 5) Compton and Susskind shall have no liability whatsoever in relation to any documents contained within the brochure or any elements of the brochure which were prepared solely by third parties, and not by Compton or Susskind. Anti-Money Laundering: To comply with our legal responsibilities for Anti-Money Laundering, it will be necessary for the successful bidder to provide information necessary to complete these checks before the deal is completed. Information required will include: • Corporate structure and ownership details. • Identification and verification of ultimate beneficial owners. • Satisfactory proof of the source of funds for the Buyers / funders / lessee. April 2025.