

49 Park Avenue, Swinton

Manchester



In Excess of £325,000

49 Park Avenue

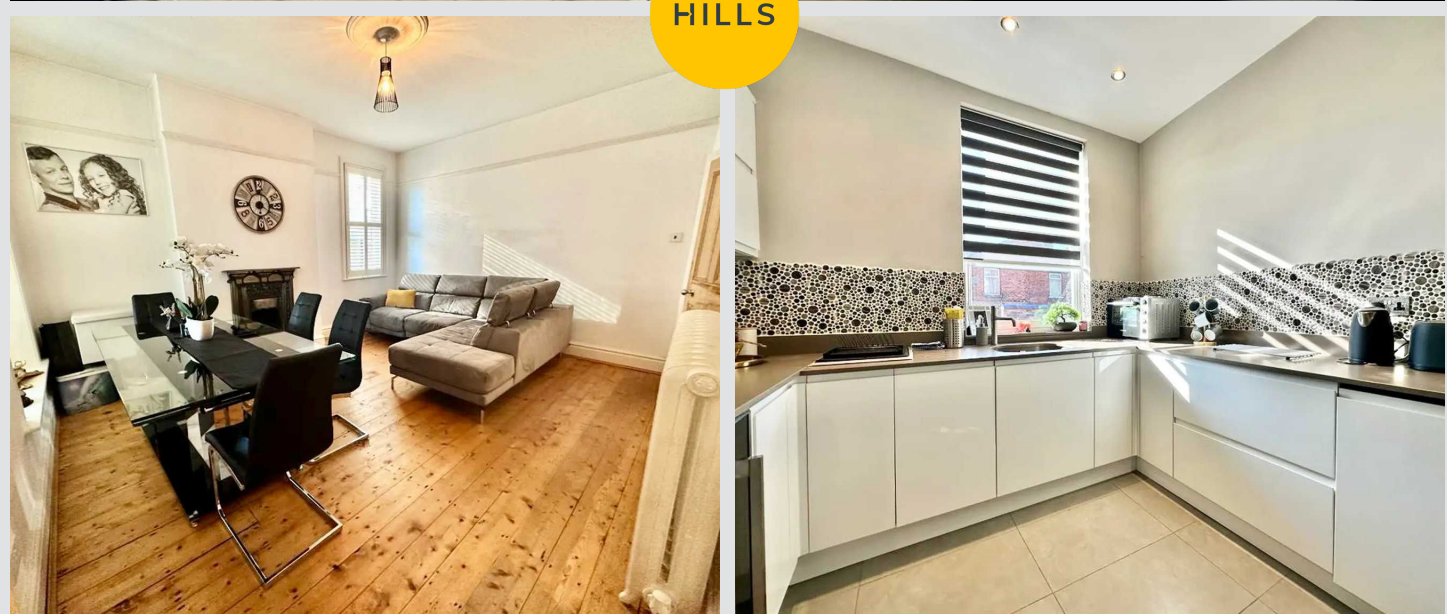
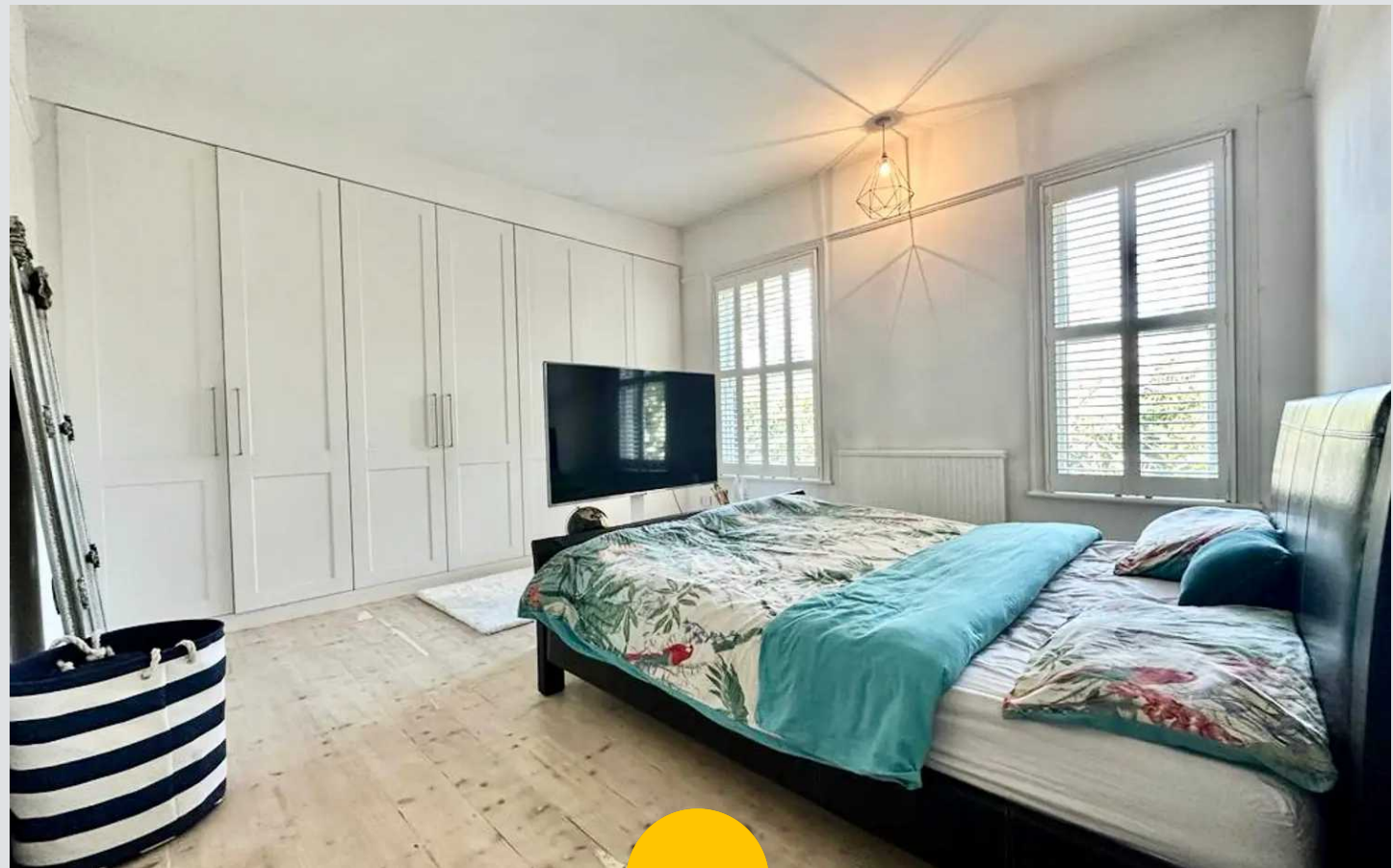
Swinton, Manchester

* CHAIN FREE * PRESENTED TO A HIGH STANDARD THROUGHOUT, this STUNNING PERIOD PROPERTY features 3 GENEROUS DOUBLE BEDROOMS along with a 4-PIECE FAMILY BATHROOM and EN-SUITE to the first floor, whilst the SPACIOUS GROUND FLOOR comprises of an entrance hallway, 2 RECEPTION ROOMS, and a FABULOUS MODER..

Council Tax band: C

Tenure: Freehold

- CHAIN FREE
- DECEPTIVELY SPACIOUS - MUST BE SEEN TO BE FULLY APPRECIATED
- 3 GENEROUS DOUBLE BEDROOMS
- 2 RECEPTION ROOMS
- MODERN FITTED KITCHEN
- STUNNING PERIOD PROPERTY - PRESENTED TO A HIGH STANDARD THROUGHOUT WITH MANY ORIGINAL FEATURES
- DESIRABLE RESIDENTIAL AREA CLOSE TO MANY LOCAL AMENITIES & EXCELLENT TRANSPORT LINKS
- 2 BATHROOMS
- TANKED CELLAR OFFERING POTENTIAL FOR FURTHER DEVELOPMENT
- ELECTRICALLY GATED OFF-ROAD PARKING TO THE REAR & BEAUTIFULLY PRESENTED GARDENS TO THE FRONT, SIDE & REAR



Hallway

14' 1" x 3' 11" (4.30m x 1.20m)

Reception 1

16' 5" x 12' 2" (5.00m x 3.70m)

Reception 2

15' 1" x 13' 1" (4.60m x 4.00m)

Kitchen

17' 9" x 9' 6" (5.40m x 2.90m)

Rear Hall

6' 7" x 6' 7" (2.00m x 2.00m)

Landing

15' 1" x 5' 3" (4.60m x 1.60m)

Bedroom 1

16' 5" x 13' 1" (5.00m x 4.00m)

Bedroom 2

14' 1" x 9' 6" (4.30m x 2.90m)

Bedroom 3

10' 10" x 7' 10" (3.30m x 2.40m)

En-Suite

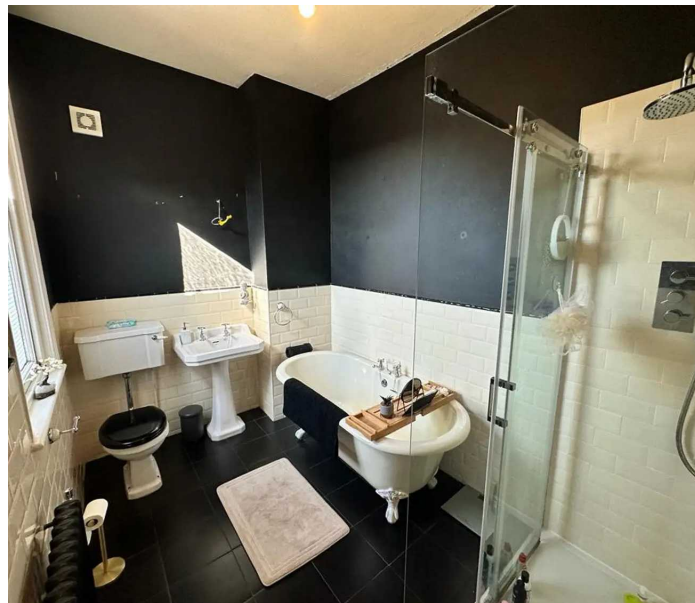
5' 7" x 4' 11" (1.70m x 1.50m)

Bathroom

10' 10" x 6' 11" (3.30m x 2.10m)

Cellar

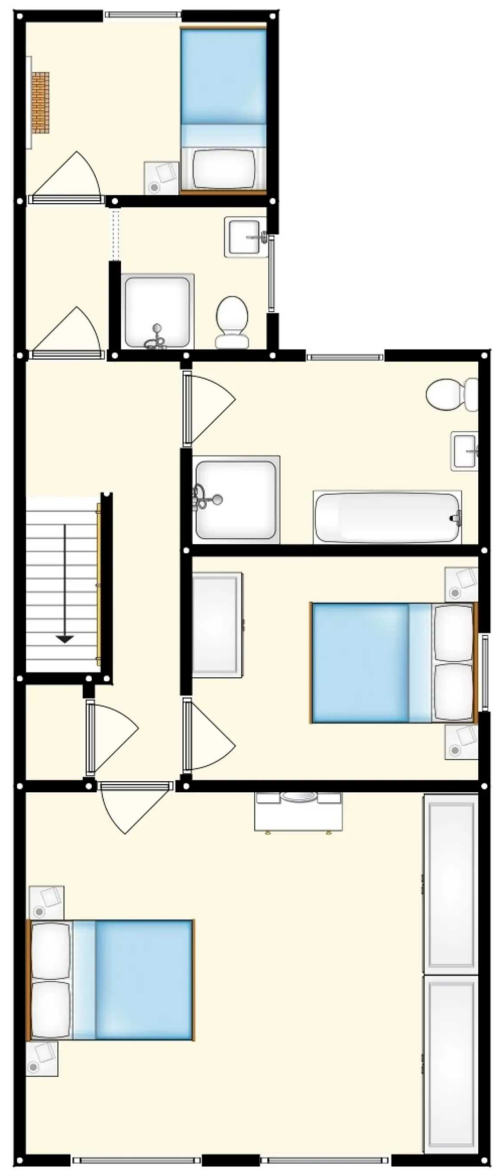
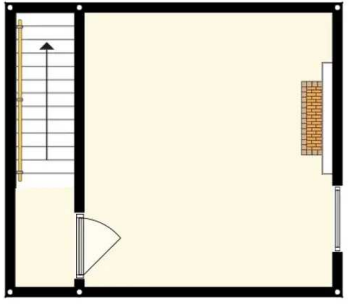
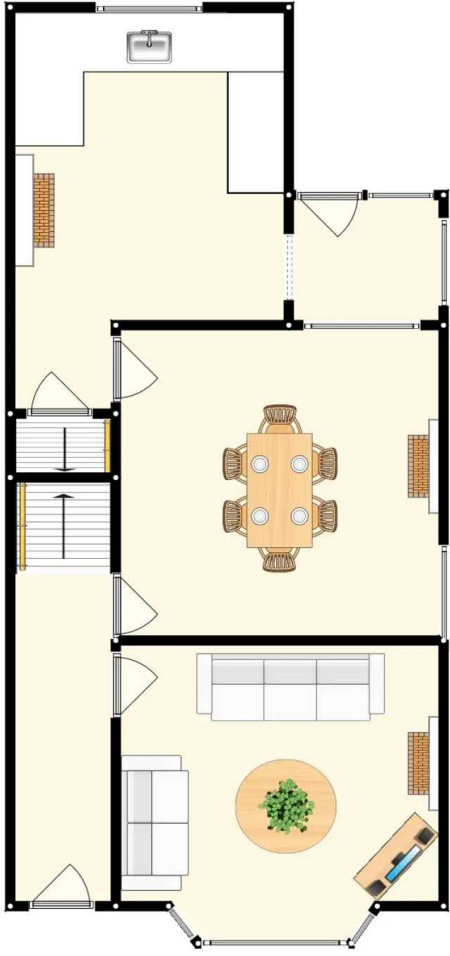
13' 9" x 12' 2" (4.20m x 3.70m)





HILLS







Hills Swinton | Salfords Estate Agent

4 Pendlebury Road, Swinton - M27 4AR

0161 794 2888

swinton@hills.agency

www.hills.agency/



THE PROPERTY MISDESCRIPTIONS ACT 1991 The Agent has not tested any apparatus, equipment, fixtures and fittings or services and so cannot verify that they are in working order or fit for the purpose. A Buyer is advised to obtain verification from their Solicitor or Surveyor. References to the Tenure of a Property are based on information supplied by the Seller. The Agent has not had sight of the title documents. A Buyer is advised to obtain verification from their Solicitor. You are advised to check the availability of this property before travelling any distance to view. Every effort and precaution has been made to ensure these particulars are correct and not misleading but their accuracy is not guaranteed nor do they form part of any contract. If there is any point which is of particular importance to you, please contact us and we will provide any information you require. This is advisable, particularly if you intend to travel some distance to view the property. The mention of any appliances and services within these details does not imply that they are in full and efficient working order. These particulars are in draft form awaiting Vendors confirmation of their accuracy. These details must therefore be taken as a guide only.