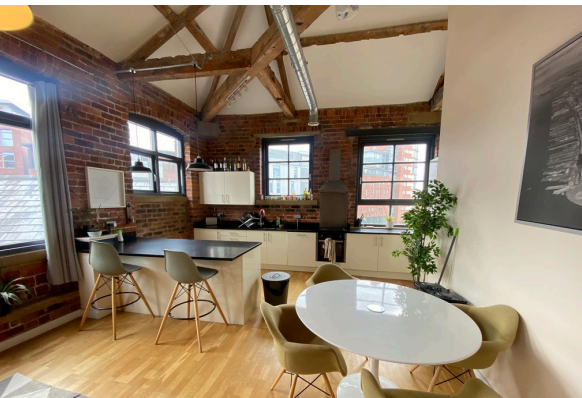


# ZENKO Properties

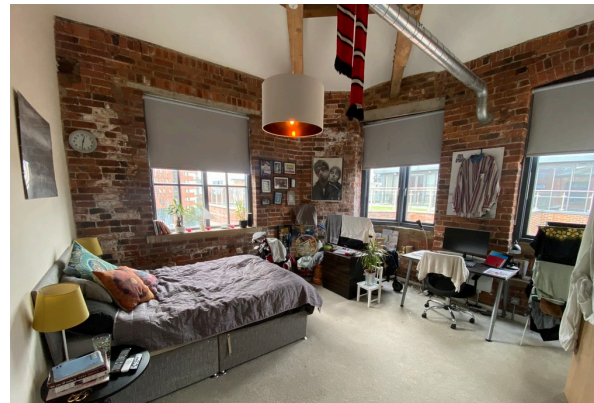


£1,650 PCM

- TWO BEDROOMS
- TWO BATHROOMS
- TOP FLOOR APARTMENT
- CONVERSION
- EXPOSED BRICK AND BEAMS
- SOUTH FACING BALCONY
- TOP FLOOR FLAT
- HUGE LIVING AREA

East Street, Leeds, LS9 8EB

**\*\* TWO BEDROOMS AND TWO BATHROOMS \*\*  
GRADE II LISTED CONVERSION \*\* ALLOCATED  
SECURE PARKING \*\* BALCONY \*\* EXPOSED  
BRICKWORK THROUGHOUT \*\***



Zenko Properties would like to present this top floor two bedroom apartment. A former textile mill, East Street Mills offers a range of studio, one and two bedroom apartments. This exceptional gated development has been converted into breath-taking residential apartments. They have been carefully restored and retain a number of original features. Exposed brickwork, cast iron pillars, original roof timbers and feature windows balance modern contemporary living with the industrial past perfectly.

Positioned on the second floor (top floor) and extending to approximately 1150 square feet this apartment features an impressive open plan kitchen/living area oozing with character. The bespoke fitted kitchen features granite worktops throughout, breakfast bar, integrated appliances including dishwasher, electric oven and hob, fridge and freezer.

There are high ceilings throughout the apartment as well as full height windows, really emphasising the 'loft style' appeal of this unique apartment. Both bedrooms are of good proportions, each with fitted wardrobes and the principle having access to the ensuite bathroom. There is a sunny south facing balcony off the living area and the apartment has the additional benefit of an allocated secure car parking space close to the entrance of the building.

Available 22nd September  
Furnished

2 The Chandlers, Leeds, West  
Yorkshire, LS2 7EZ

[www.zenkoproperties.co.uk](http://www.zenkoproperties.co.uk)  
0113 247 0777  
[sales@zenkoproperties.co.uk](mailto:sales@zenkoproperties.co.uk)

Agents Note: Whilst every care has been taken to prepare these sales particulars, they are for guidance purposes only. All measurements are approximate are for general guidance purposes only and whilst every care has been taken to ensure their accuracy, they should not be relied upon and potential buyers are advised to recheck the measurements