



The Old Sweet Shop, Parkwood Road, Nutfield

Guide Price £800,000



The Old Sweet Shop, Parkwood Road

Welcome to this stunning Edwardian family home, a spacious and luxurious five bedroom detached house boasting exquisite design and timeless elegance. Situated in a sought-after location, this property is an ideal haven for any growing family or professional looking for a grand residence.

Upon entering, you will be greeted by an inviting hallway leading to three reception rooms, providing ample space for entertaining and relaxation. The lower ground floor also features a basement gym, perfect for fitness enthusiasts. The sleeping quarters consist of five well-proportioned bedrooms, including two en-suites and a family bathroom, ensuring ultimate comfort and convenience for the entire family.

Outside, the property offers a beautifully maintained family garden, providing a great space to escape to with a spacious lawn, perfect for outdoor activities and al fresco dining. Additionally, the property benefits from a double garage and gated off-road parking, ensuring secure parking for multiple vehicles.

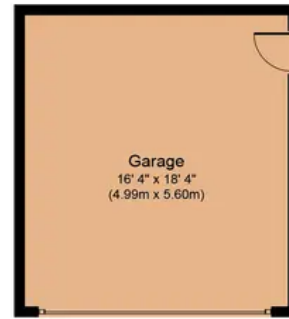
Don't miss the opportunity to call this magnificent Edwardian family home your own. Contact us today to arrange a viewing and experience the epitome of luxury living.

Tenure: Freehold

- Stunning Edwardian Family Home
- Five Bedroom Detached
- Three Reception Room And A Basement Gym
- Double Garage And Driveway Parking
- Family Bathroom And Two En-suites



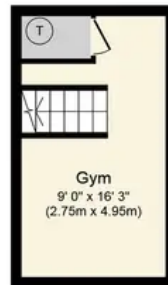




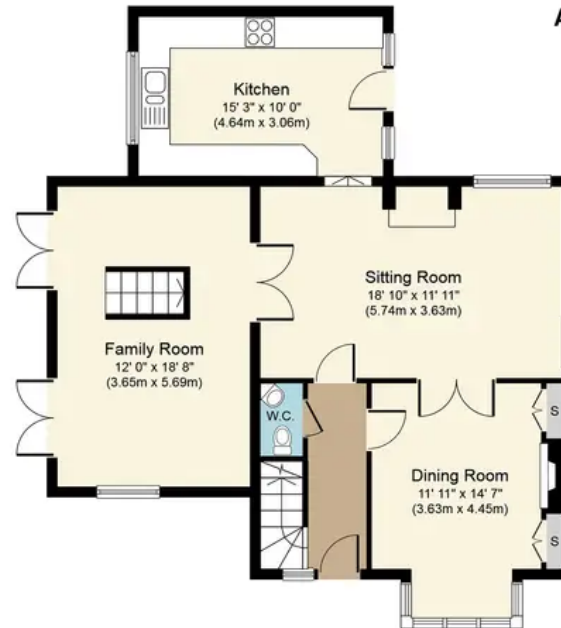
Garage
Approximate Floor Area
297 sq. ft.
(27.6 sq. m.)



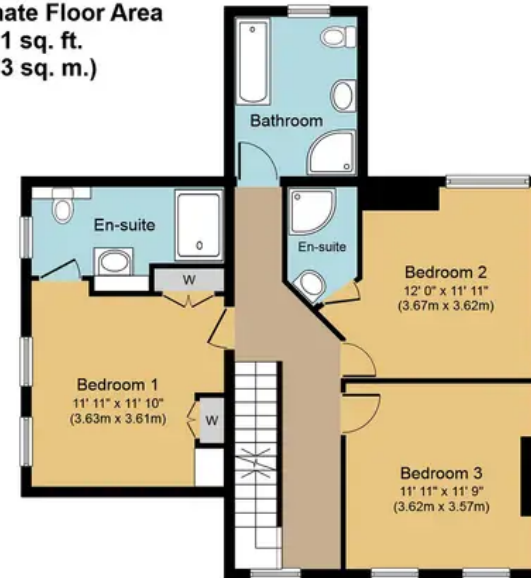
Second Floor
Approximate Floor Area
401 sq. ft.
(37.3 sq. m.)



Lower Ground Floor
Approximate Floor Area
146 sq. ft.
(13.5 sq. m.)



Ground Floor
Approximate Floor Area
864 sq. ft.
(80.3 sq. m.)



First Floor
Approximate Floor Area
764 sq. ft.
(70.9 sq. m.)



Parkwood Road, RH1

Approx. Gross Internal Floor Area 2,471 sq. ft. (229.6 sq. m.)

Whilst every attempt has been made to ensure the accuracy of the floor plan contained here, measurements of doors, windows, rooms and any other items are approximate and no responsibility is taken for any error, omission, or mis-statement. The measurements should not be relied upon for valuation, transaction and/or funding purposes. This plan is for illustrative purposes only and should be used as such by any prospective purchaser or tenant. The services, systems and appliances shown have not been tested and no guarantee as to their operability or efficiency can be given.