



**18 Oakleaf Way, Blackpool**

Blackpool

**£695 pcm**



# 18 Oakleaf Way

Blackpool, Blackpool

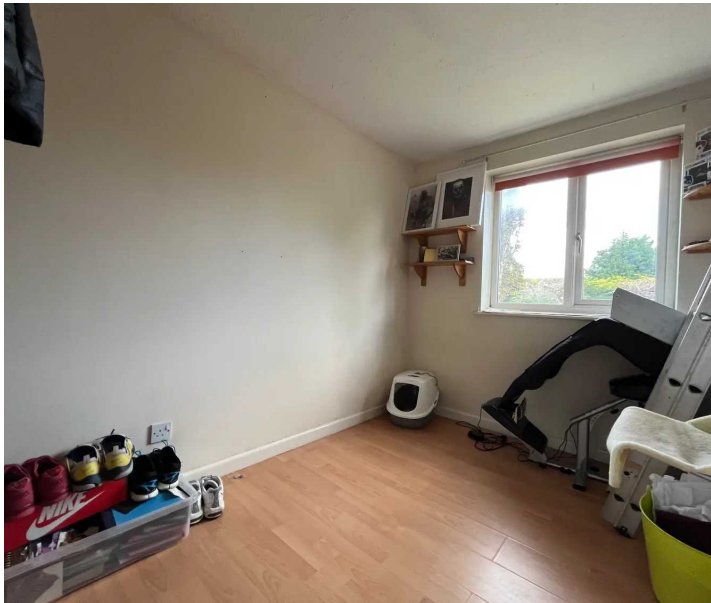
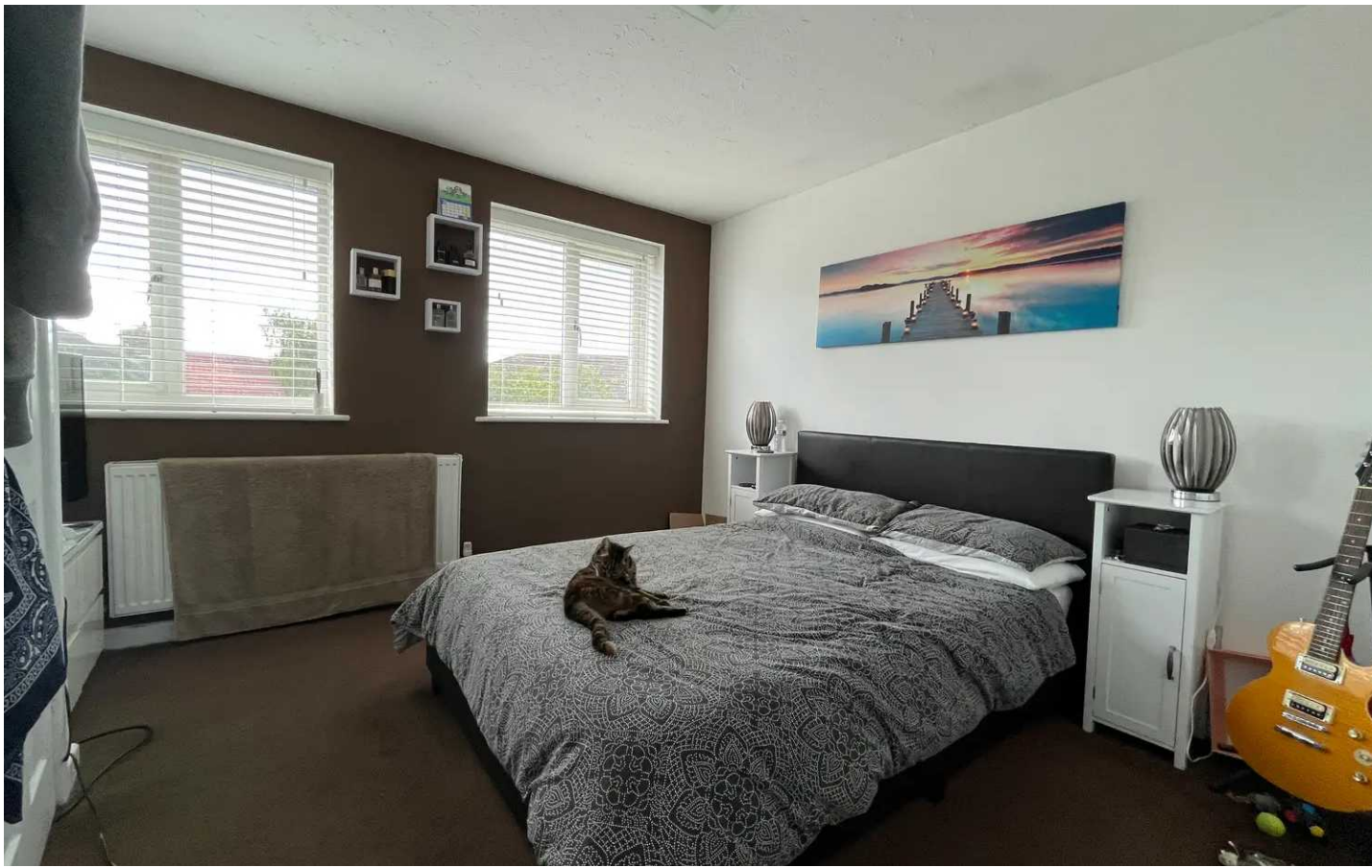
Two bedroom mid terraced property situated in a convenient quiet residential location within close proximity of many amenities, schools, shops and transport links. The accommodation briefly comprises of entrance hall, lounge, kitchen. To the first floor there are two bedrooms along with a three piece bathroom suite. Externally there is an enclosed rear garden.

- Quiet Cul-De-Sac Location
- Close To Many Amenities
- Close Proximity To The M55

















## Stephen Tew Estate Agents

Stephen Tew Estate Agents, 132 Highfield Road - FY4 2HH

01253 401111

[info@stephentew.co.uk](mailto:info@stephentew.co.uk)

[www.stephentew.co.uk](http://www.stephentew.co.uk)

