



£1,350 PCM

- BEAUTIFULLY CONVERTED TOWN HOUSE
- TWO BEDROOM
- ARRANGED OVER FOUR FLOORS

- 2 X ALLOCATED PARKING SPACE FOR £100 PER MONTH EACH
- CHARACTER AND ORIGINAL FEATURES THROUGHOUT

Neptune Street, West Yorks, LS9  
8AN

**\*\* STUNNING CONVERTED TOWNHOUSE  
ARRANGED OVER 4 FLOORS \*\* EXPOSED  
BRICKWORK AND BRIMMING WITH ORIGINAL  
FEATURES \*\* CONTEMPORY UPGRADES \*\*  
EACH ALLOCATED PARKING SPACE £100**



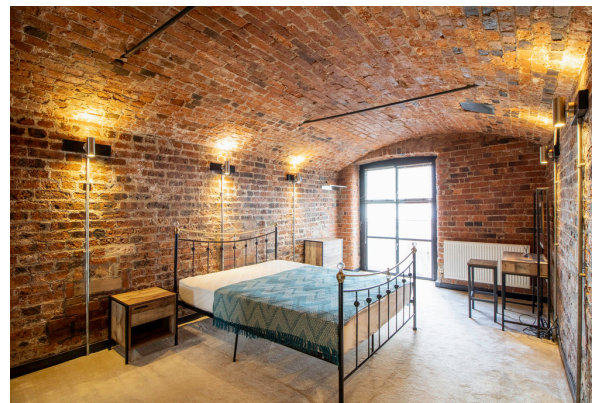
This exceptional Grade II Listed building on the banks of the river Aire was converted into a stunning collection of residential apartments with the exception of one completely unique four storey townhouse. This one teems with period features including exposed brickwork, vaulted ceilings, exposed structural beams and full-height windows all presented in a contemporary style whilst retaining many elements of the buildings industrial heritage.

The property, rarely found in the city centre is accessed via independent entrance and arranged over four floors. To the ground floor is spacious living room with exposed timber beams and access to downstairs toilet. The first floor features a separate kitchen with integrated appliances as well as the upgraded bathroom; complete with free-standing roll top bath and separate shower. Levels three and four both feature great size, equally proportioned bedrooms with arched vaulted ceilings and exposed brickwork throughout.

The property is available immediately and has the benefit of an allocated secure car parking space.

2 secure x parking spaces can be rented for £100 extra per month each.

Available NOW



2 The Chandlers, Leeds, West  
Yorkshire, LS2 7EZ

[www.zenkoproperties.co.uk](http://www.zenkoproperties.co.uk)  
0113 247 0777  
[sales@zenkoproperties.co.uk](mailto:sales@zenkoproperties.co.uk)

Agents Note: Whilst every care has been taken to prepare these sales particulars, they are for guidance purposes only. All measurements are approximate and for general guidance purposes only and whilst every care has been taken to ensure their accuracy, they should not be relied upon and potential buyers are advised to recheck the measurements