



Fisher Street, Blackpool

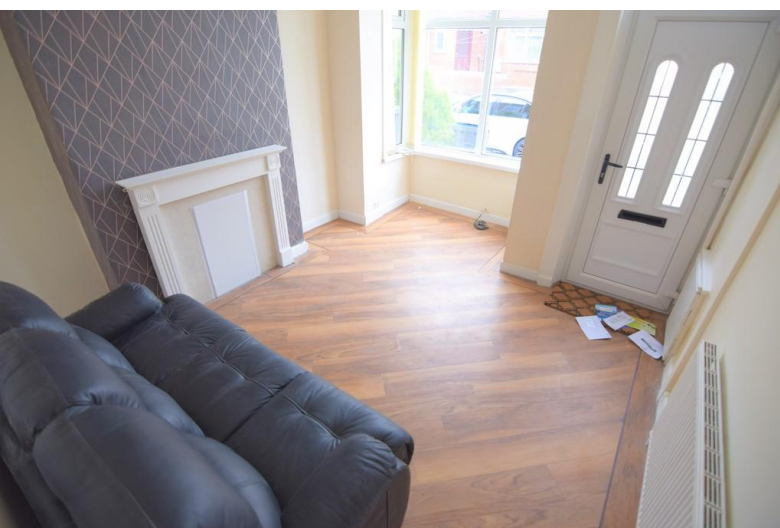
Lancashire, FY1 3HX

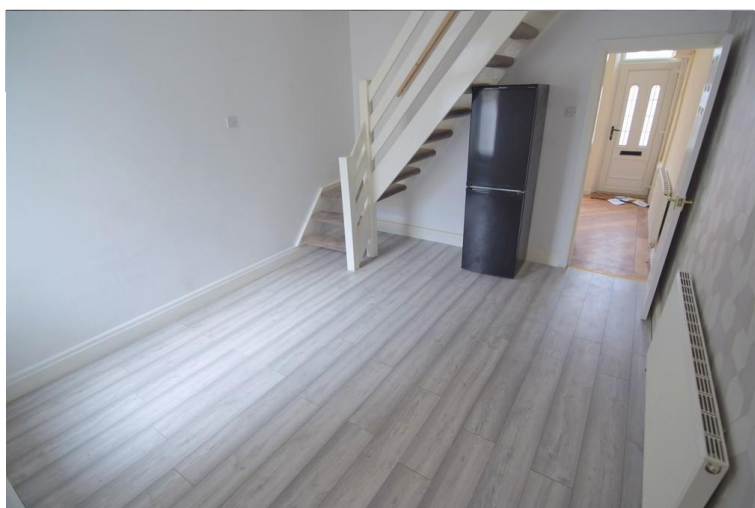
- **SPACIOUS 2 BEDROOM MID TERRACED HOUSE**
- **TWO RECEPTION ROOMS**
- **IDEAL FIRST TIME BUY OR BUY TO LET**
- **FOUR PIECE BATHROOM**

OFFERS OVER

£80,000

EPC Rating 'TBC'





Property Description

Spacious two bedroom mid terraced house, situated in a convenient location close to the town centre, schools, shops and other local amenities.

Accommodation comprising lounge, dining room, kitchen, two first floor bedrooms and four piece bathroom. Externally with easily maintained paved garden areas to the front and rear. The property benefits from gas central heating and double glazing.

Ideal first time buy or buy to let. No chain involved.



LOUNGE

13' 6" x 10' 9" (4.11m x 3.28m) UPVC double glazed exterior door. Double glazed bay window to the front. Fireplace. Central heating radiator. Meter cupboard.

DINING ROOM

12' 7" x 10' 9" (3.84m x 3.28m) Double glazed window to the rear. Central heating radiator. Stairs to the first floor.

KITCHEN

9' 7" x 6' 0" (2.92m x 1.83m) A range of fitted wall and base units with complementary work surfaces. Tiled splash backs. Stainless steel sink unit with mixer tap. Four ring gas hob, electric oven and extractor over. Plumbed for washing machine. Wall mounted boiler. Double glazed window to the side. UPVC double glazed exterior door. Laminate floor. Central heating radiator.

STAIRS AND LANDING

Central heating radiator. Loft access.

BEDROOM 1

10' 8" x 10' 2" (3.25m x 3.1m) Double glazed window to the front. Central heating radiator.

BEDROOM 2

9' 8" x 7' 6" (2.95m x 2.29m) Double glazed window to the rear. Central heating radiator.

BATHROOM

9' 7" x 6' 2" (2.92m x 1.88m) Four piece suite comprising panelled bath, pedestal wash hand basin, low flush wc and shower cubicle. Double glazed window to the side. Central heating radiator.

GARDENS

Enclosed easily maintained paved gardens to the front and rear.



%epcGraph_c_1_325%

21 Counce Street
Blackpool
Lancashire
FY1 3LA

www.moveholmes.co.uk
01253 928200
enquiries@moveholmes.co.uk

Agents Note: Whilst every care has been taken to prepare these sales particulars, they are for guidance purposes only. All measurements are approximate and for general guidance purposes only and whilst every care has been taken to ensure their accuracy, they should not be relied upon and potential buyers are advised to recheck the measurements