



The Willow, Marklands

PR5 5XR



£750,000



The Willow is a stunning five bedroom property with almost 2,700 square feet of accommodation set over three floors and with lovely views out over fields and trees. All five bedrooms benefit from en suite facilities with those on the second floor also having his and hers dressing rooms. Set in a prestigious and secluded gated development of only nine beautifully designed family homes, all finished to a very high specification with large open living spaces flooded with natural light allowing a seamless transition from inside to outside where you can relax and entertain in a generous garden plot. Perfectly positioned in Cuerden for easy access to primary transport routes, local towns and cities and the beautiful Cuerden Valley, and constructed to exacting standards by Milltom Design & Build, each of these properties offers style, space and luxury in a very energy efficient way. Each home is constructed with highly insulated timber wall panels for maximum thermal efficiency, fitted with the latest Bosch appliances with A rated efficiency and have low energy LED lighting throughout. Added to that the windows are triple A rated for their performance, meaning, that as well as having plenty of natural light you also benefit from solar gain, helping reduce running costs even further. The construction has been designed to minimise carbon footprint without compromising on the quality of living and a feeling of opulence. Designed with families in mind with plenty of parking, integral garage and plenty of space both inside and out, Marklands is a wonderful place to call home.



The Willow is a stunning five bedroom property with almost 2,700 square feet of accommodation set over three floors and with lovely views out over fields and trees.

Tenure: Freehold

- Five bedrooms
- Integral garage
- Open plan living
- Two master suites
- Eco homes
- Circa 2,600sq ft of accommodation



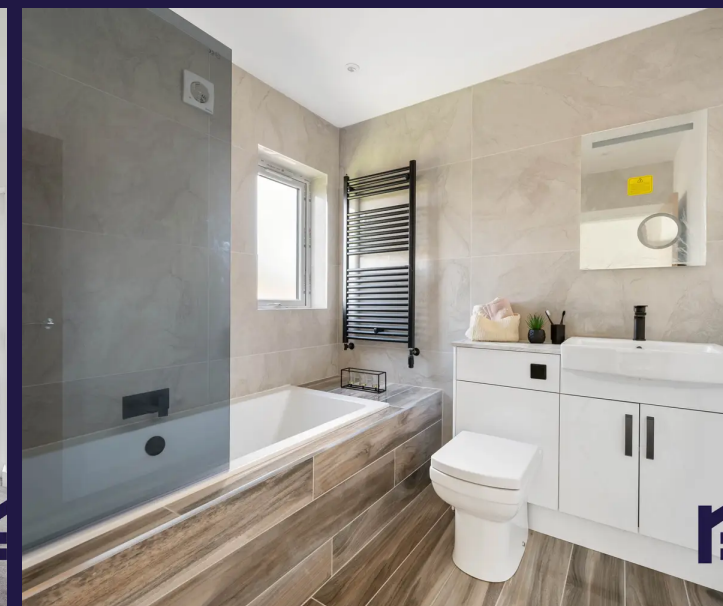
Eccleston Branch

265 The Green, Eccleston, PR7 5TF
01257 451673

Coppull Branch

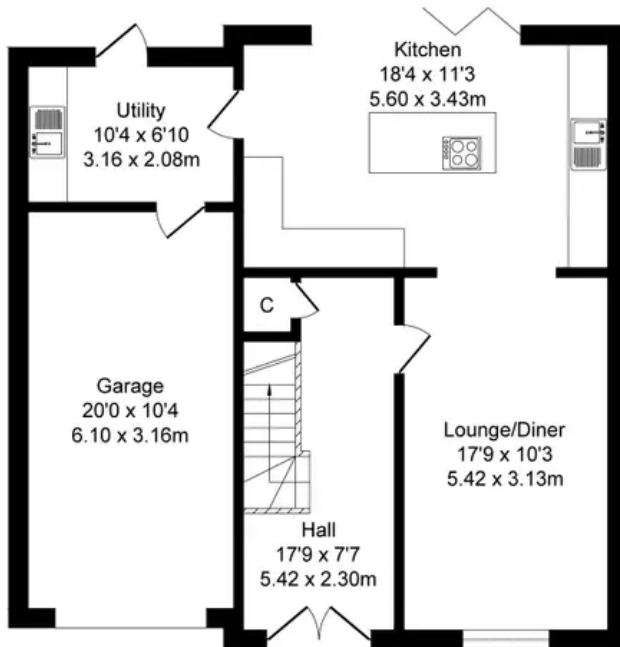
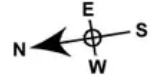
244 Spendmore Lane, Coppull, PR7 5DE
01257 794588

www.hometruthslancs.co.uk
office@hometruthslancs.co.uk

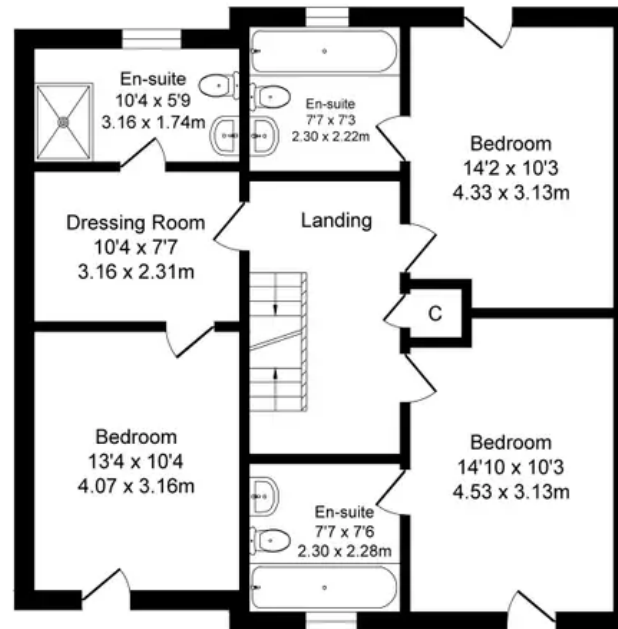


Total Approx. Floor Area 2517 Sq.ft. (233.7 Sq.M.)

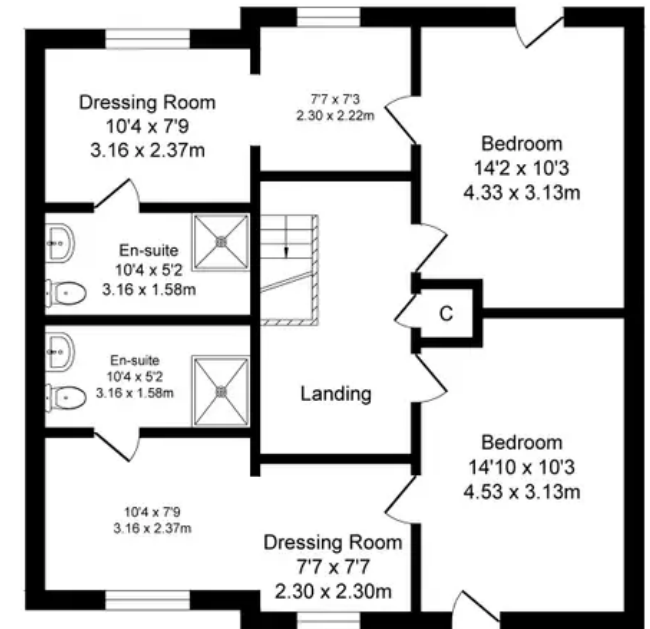
Surveyed and drawn by Lens Media for illustrative purposes only. Not to scale. Whilst every attempt was made to ensure the accuracy of the floor plan, all measurements are approximate and no responsibility is taken for any error.



Ground Floor
Approx. Floor Area 839 Sq.Ft (77.9 Sq.M.)



First Floor
Approx. Floor Area 839 Sq.Ft (77.9 Sq.M.)



Second Floor
Approx. Floor Area 839 Sq.Ft (77.9 Sq.M.)