



Flat 11, Old Market Terrace Hart Street, Brentwood

£1,700 pcm Leasehold

Two Bedrooms and Two Bathrooms • Penthouse Apartment • Gated Car Park • Brentwood Station 0.5 miles • Spacious Lounge • Two Double Bedrooms • Open Plan Kitchen with Integrated Appliances • Study Area



Luxurious TWO BEDROOM PENTHOUSE flat occupying the entire third floor of this apartment block, situated just off the High Street. The apartment offers superb stylish living along with old Brentwood charm.

The large entrance hall, which would also be ideal as a study, separates the living areas of apartment from the two bedrooms and two bathrooms.

The spacious lounge with windows to two aspects, leads on to a fully fitted open plan modern kitchen with integrated appliances.

The apartment boasts a master bedroom suite with shower room and a further double size bedroom.

The unique main bathroom utilises space to maximum effect to provide a luxurious and relaxing bathing area.

Other benefits include ample storage, gated private parking. Brentwood High Street is minutes away offering boutique shopping and fine dining. The station is a short walk providing links to London via Fenchurch Street.

Tenancy Deposit - £1960

Initial Tenancy Term - Twelve Months

EPC Rating - C

Council Tax Band - E

Council Tax band: E

Tenure: Leasehold

EPC Energy Efficiency Rating: C

EPC Environmental Impact Rating:



Lounge/Kitchen

25' 3" x 17' 1" (7.70m x 5.20m)

Bedroom One

13' 9" x 9' 10" (4.20m x 3.00m)

Ensuite

7' 7" x 4' 11" (2.30m x 1.50m)

Bedroom Two

10' 6" x 9' 6" (3.20m x 2.90m)

Bathroom

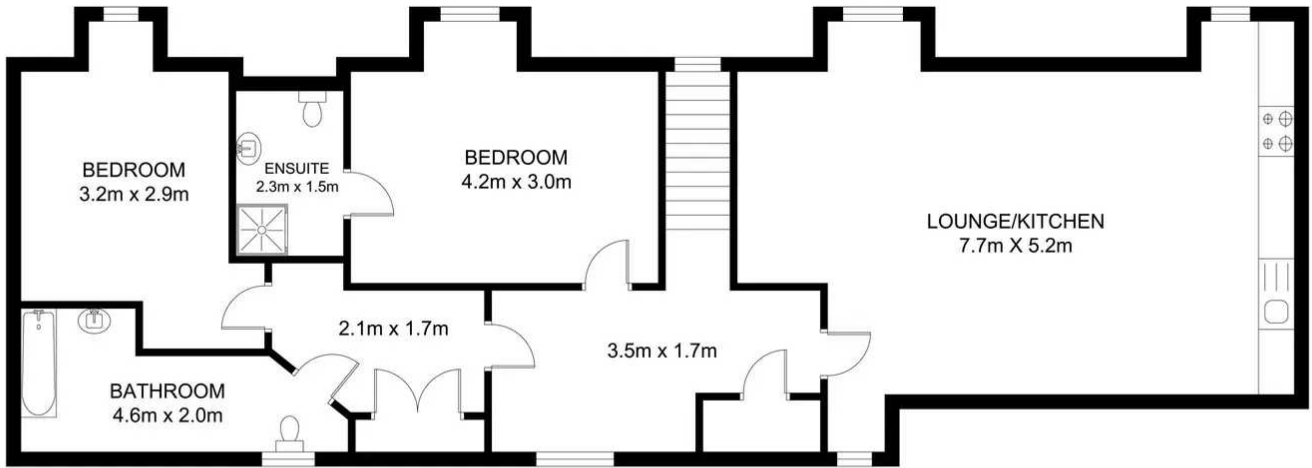
15' 1" x 6' 7" (4.60m x 2.00m)

Lobby Area

11' 6" x 5' 7" (3.50m x 1.70m)







APPROX. FLOOR
AREA 995.23 SQ. FT.
(92.46 SQ. M)

TOTAL APPROX. FLOOR AREA 995.23 SQ.FT. (92.46 SQ.M.)
Measurements are approximate. Not to Scale. Illustrative purposes only

You can include any text here. The text can be modified upon generating your brochure.