



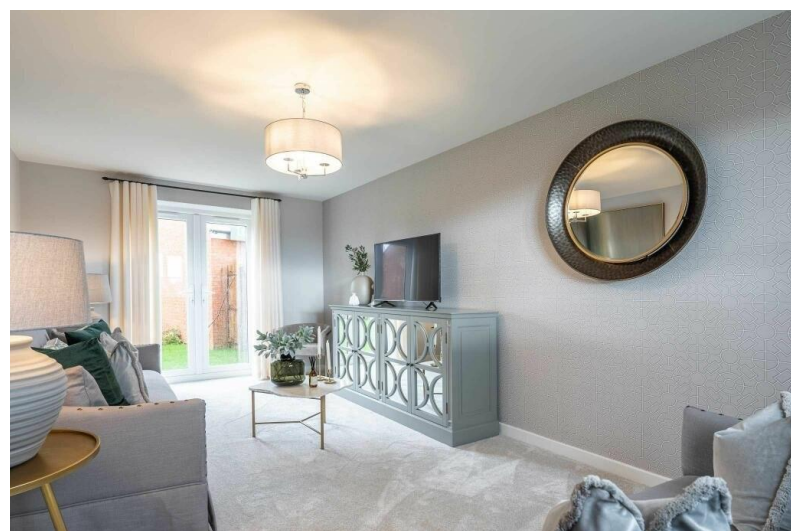
dm^g
DAVID MARTIN
GROUP

Kelvedon Road
Tiptree, CO5 0LX

£375,000

EPC Rating 'TBC'

- Three Bedroom House
- Open Plan Living Space
- Ground Floor Cloakroom
- Part Exchange Available



****Ask Us Today About Part Exchange - Call For Further Information****

David Martin Estate Agents are delighted to offer for sale this BRAND NEW family home, THE MORELLO situated in the popular village of Tiptree with its excellent range of shops, schools and local amenities and good access to the A12, featuring a stylish open-plan kitchen/dining/living room with French doors leading into the garden, storage cupboards and a ground floor cloakroom. The first floor is home to three bedrooms and a modern family bathroom. Externally the property benefits from a driveway providing off road parking and an enclosed rear garden.

ENTRANCE HALL

CLOAKROOM

KITCHEN/DINING 17' 09" x 8' 10" (5.41m x 2.69m)

LOUNGE 17' 04" x 10' 05" (5.28m x 3.18m)

LANDING

BEDROOM ONE 17' 11" x 10' 06" (5.46m x 3.2m)

BEDROOM TWO 13' 07" x 9' 11" (4.14m x 3.02m)

BEDROOM THREE 17' 04" x 10' 04" (5.28m x 3.15m)

FAMILY BATHROOM



David Martin
35a Church Road
Tiptree
Colchester
Essex

www.dmgtiptree.co.uk
tiptree@dmgtiptree.co.uk
01621 815815

Agents Note: Whilst every care has been taken to prepare these sales particulars, they are for guidance purposes only. All measurements are approximate and are for general guidance purposes only and whilst every care has been taken to ensure their accuracy, they should not be relied upon and potential buyers are advised to recheck the measurements