



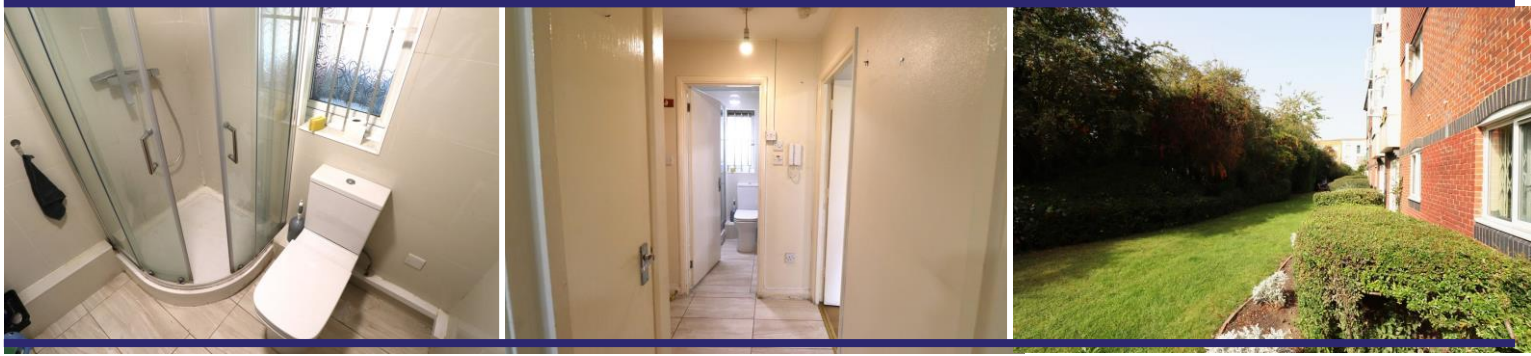
Frensham Close | Southall | UB1 2YE

£210,000

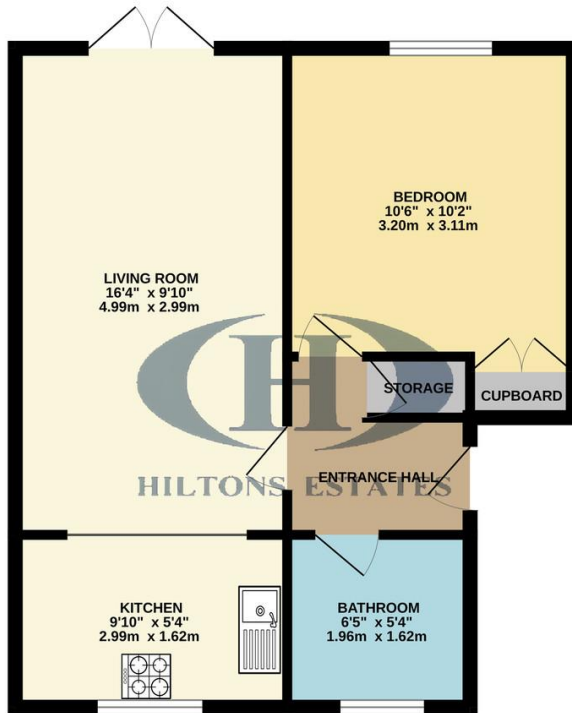
Hiltons Estates present this superb 1 bedroom purpose built ground floor flat. Property boasts excellent reception size with access to communal garden. This flat benefits from a phone entry system, perfect to ensure maximum security and a well maintained bathroom. It also has allocated parking space making it ideal for vehicle owners. A property that cannot be missed by first-time buyers and investors looking for a great rental yield.

Excellent opportunity for families to move in to being on the doorstep of Lady Margaret Road, the airport, transport links such as M4/M25, British rail and all other local amenities.

- Spacious One Bedroom Apartment
- Located in Urban Southall and walking distance to Southall Rail Station (Cross Rail)
- Bus links and good transport links to Heathrow, Central London, M4, M25, M40 and A40!



GROUND FLOOR
403 sq.ft. (37.4 sq.m.) approx.



TOTAL FLOOR AREA: 403 sq.ft. (37.4 sq.m.) approx.
Whilst every attempt has been made to ensure the accuracy of the floorplan contained here, measurements of doors, windows, rooms and any other items are approximate and no responsibility is taken for any error, omission or mis-statement. This plan is for illustrative purposes only and should be used as such by any prospective purchaser. The services, systems and appliances shown have not been tested and no guarantee as to their operability or efficiency can be given.
 Made with Metrepx 05023

Contact Details

137 Western Road
 Southall
 Middlesex
 UB2 5HN

www.hiltons-estates.com
 Harvin@hiltons-estates.com
 02088679555

Energy Efficiency Rating

Score	Energy rating	Current	Potential
92+	A		
81-91	B		83 B
69-80	C	70 C	
55-68	D		
39-54	E		
21-38	F		
1-20	G		

Agents Note: Whilst every care has been taken to prepare these sales particulars, they are for guidance purposes only. All measurements are approximate are for general guidance purposes only and whilst every care has been taken to ensure their accuracy, they should not be relied upon and potential buyers are advised to recheck the measurements