



9 Pentland View, Uphall

Offers Over £139,000



9 Pentland View

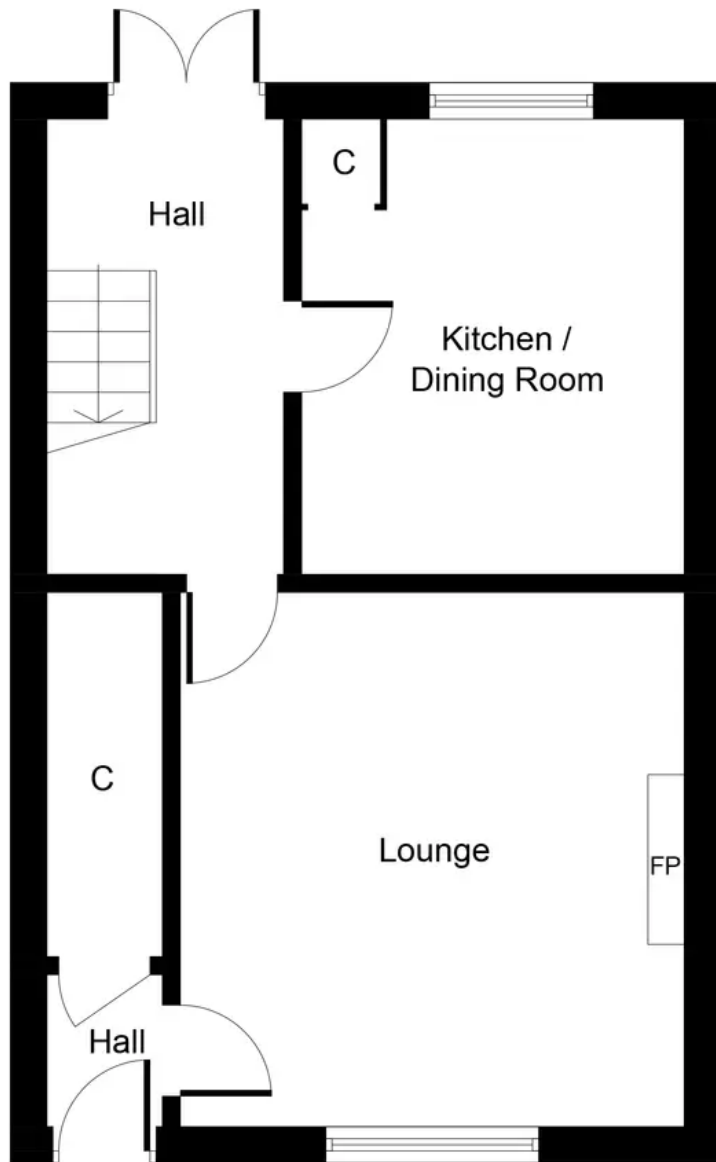
Uphall, Broxburn

A most elegantly presented Three Double Bedroom terraced property showcasing a stylish high gloss modern Kitchen and stunning Bathroom. The property offers the discerning buyer contemporary design with creative enhancements throughout. The current owners have recently replaced all double glazed windows and installed composite doors to the front and rear. Rarely does such a truly well presented property become available and accordingly early viewing is highly recommended. Council Tax band: B

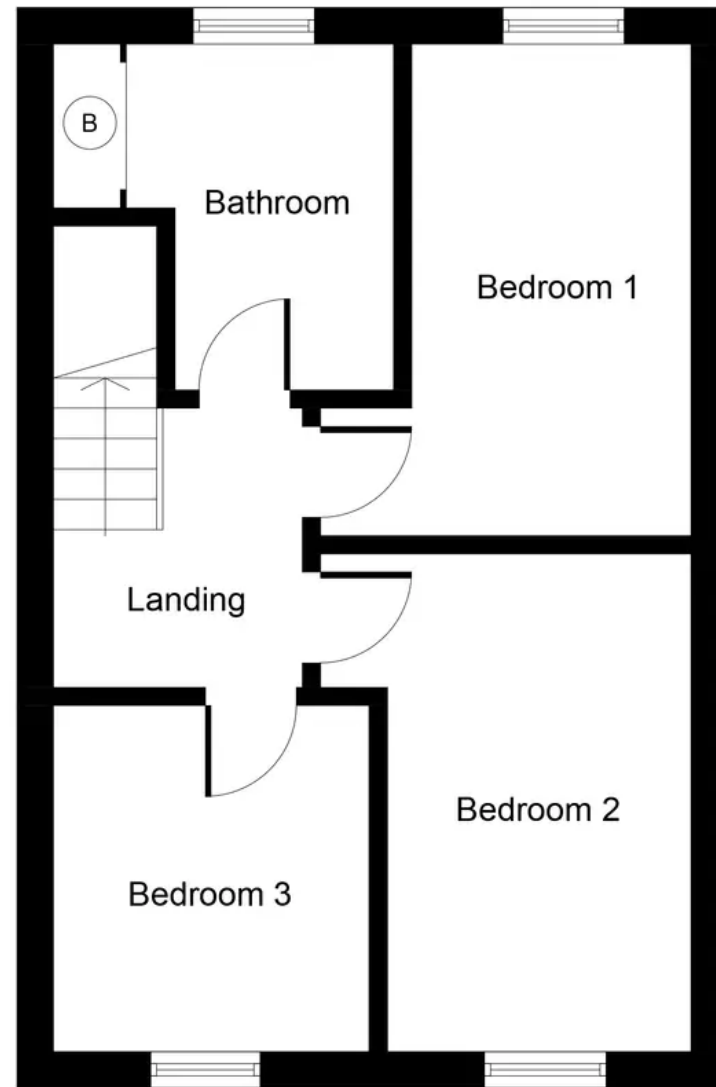
Tenure: Freehold

- Contemporary High Gloss Fitted Kitchen with integrated appliances
- Stunning Modern Bathroom Suite fully tiled
- New Windows and Composite Doors recently installed
- Immaculately Presented Three Double Bedroom terraced house
- Generously proportioned rooms throughout
- Within walking distance to local amenities and schools
- Fully enclosed Gardens to Front and rear
- Open aspect to front
- Excellent commuter links within close proximity
- EPC D





Ground Floor
Approximate Floor Area
469 Sq. ft.
(43.6 Sq. m.)



First Floor
Approximate Floor Area
469 Sq. ft.
(43.6 Sq. m.)

Whilst every attempt has been made to ensure the accuracy of the floor plan contained here, measurements of doors, windows, rooms and any other items are approximate and no responsibility is taken for any error, omission, or mis-statement. The measurements should not be relied upon for valuation, transaction and/or funding purposes. This plan is for illustrative purposes only and should be used as such by any prospective purchaser or tenant. The services, systems and appliances shown have not been tested and no guarantee as to their operability or efficiency can be given.



KnightBain Estate Agents

Knightbain, 4 Greendykes Road, Broxburn - EH52 5AG

01506 852000

info@knightbain.co.uk

www.knightbain.co.uk/

