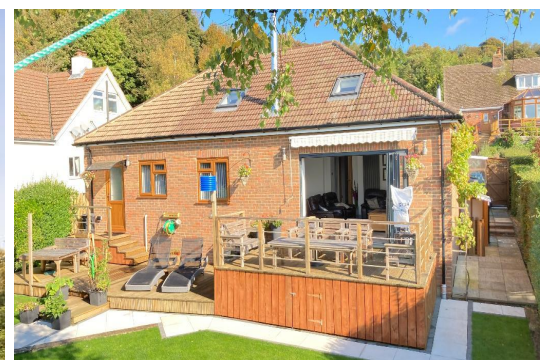




MOCKFORD & HUNT

3 Bed Detached in Pilgrims Way, Charing, Ashford, TN27 | £625,000



## Key Features

- Detached Bungalow.
- Garage and Driveway.
- Stunning Rear Extension.
- Wonderful Sunny Garden.
- Far Reaching Views.
- Virtual Tour Available on Request.

## Description

This beautiful extended bungalow is situated halfway up Charing Hill. The current owners have refurbished and extended the property over the last five years and as a result this is now a stunning home that will appeal to many buyers. Perfect for a family or anyone looking for a peaceful retreat, the vaulted ceiling of the living area creates a wonderful space with bi-folding doors that open out into the garden where the owner has utilised all the space in the most ingenious of ways.

The views from the rear garden look back towards Ashford and beyond and a raised seating area takes full advantage of this. The construction of the property has been done in such a way that there is potential for further development.

## Location

The village of Charing is situated several miles to the north of Ashford and has its own station, school, doctors and array of local shops and facilities.

The location of this home offers great access to both Maidstone and Canterbury and of course Ashford. The surrounding countryside offers beautiful walks over fields and woods.

## Ground Floor

**Porch** -

**Entrance Hall** - With storage cupboard

**Open Plan Living Space** - 37' 0" x 14' 2" (11.3m x 4.34m) Vaulted ceiling with Velux windows. Bi-folding doors to rear. Fitted kitchen. Lounge and dining area.

**Utility Room** - 12' 7" x 4' 3" (3.85m x 1.32m) Door to garage, fitted units.

**Bedroom 1** - 16' 1" x 10' 11" (4.92m x 3.33m) Window to front

**En-suite** - Shower, basin, toilet

**Bedroom 2** - 11' 11" x 10' 9" (3.64m x 3.3m) Window to front

**Bedroom 3** - 10' 10" x 5' 10" (3.32m x 1.8m) Window to side

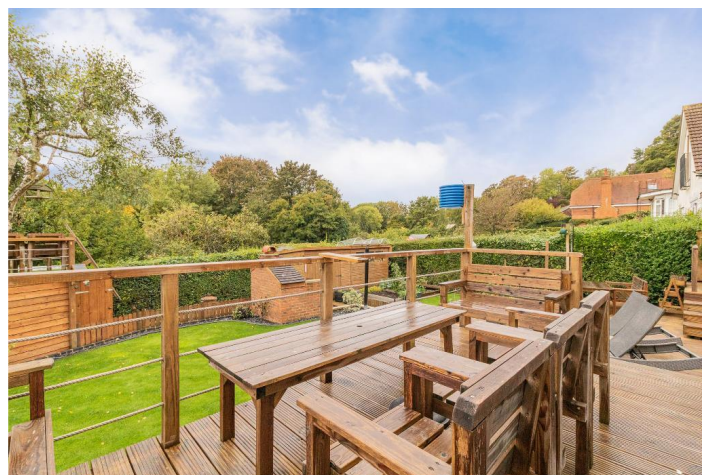
**Bathroom** - Window to side, Bath, basin, toilet

## Exterior

**Front** - Tarmac driveway with paved path and steps.

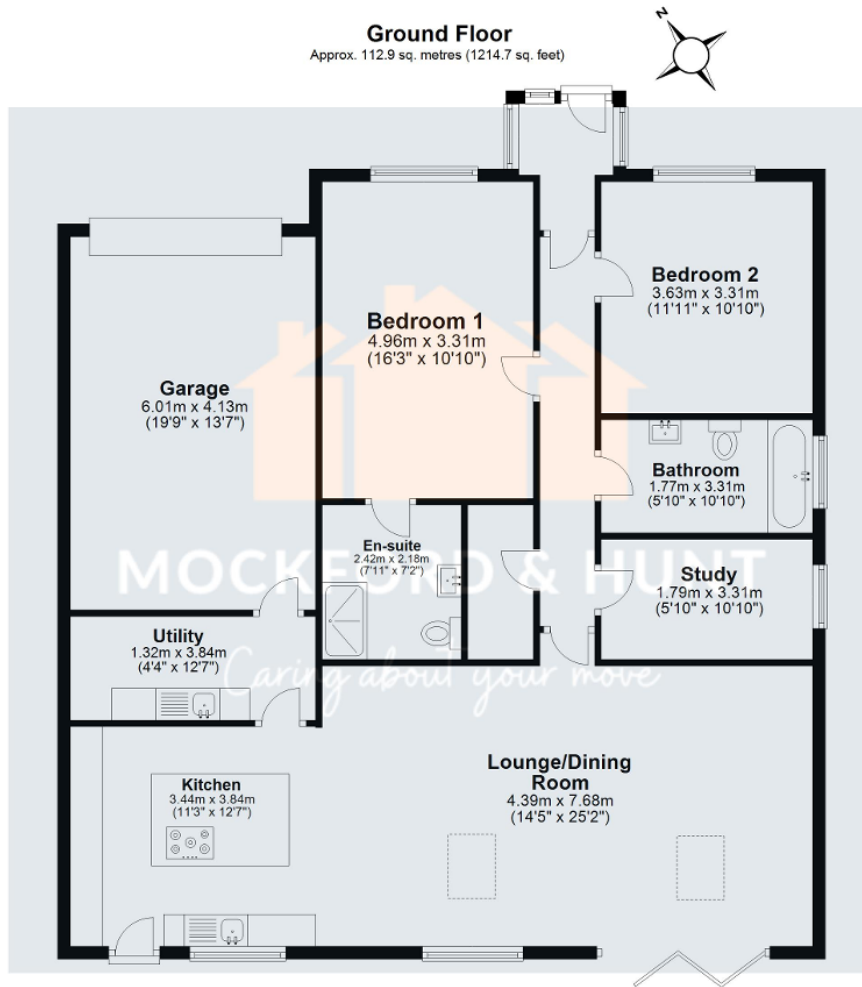
**Rear** - Tiered garden with raised decking and lawn. Various sheds and storage areas.

**Garage** - Electric door and storage over.









**Total area: approx. 112.9 sq. metres (1214.7 sq. feet)**

Floor Plan measurements are approximate and are for illustrative purposes only. While we do not doubt the floor plans accuracy, we make no guarantee, warranty or representation as to the accuracy and completeness of the floor plan.  
Plan produced using PlanUp.

Additional Photos

