



## **AN IMPRESSIVE FOUR BEDROOM, THREE BATHROOM FAMILY HOME**

---

The Mount, Rickmansworth, Hertfordshire, WD3 4DW

**ROBSONS**



# The Mount, Rickmansworth, Hertfordshire, WD3 4DW

An impressive family home standing in substantial grounds approaching 0.5 acres (taken from pro map)

- **FOUR RECEPTION ROOMS • KITCHEN/BREAKFAST ROOM • UTILITY • DOWNSTAIRS WC • FOUR BEDROOMS • TWO ENSUITES**
- **FAMILY BATHROOM • GARAGE • CARRIAGE DRIVEWAY • OFF STREET PARKING • REAR GARDEN**

This imposing four bedroom, four reception room, detached house is perfect for those families seeking a home with flexible living accommodation. Set in 0.5 acres (taken from Pro map) and located in a desirable cul-de-sac location within Rickmansworth. The property consists of a 32 ft rear lounge plus three additional reception rooms, a bespoke kitchen with ample base and wall units, integrated appliances, a breakfast island and utility room. To the first floor are four bedrooms, three with fitted wardrobes, two bedrooms offering en-suites and a family bathroom. Stairs lead to the second floor which has been converted and offers additional space that could be used as a playroom or study.

To the front of the property is a garage with an up and over door. The property is accessed via a carriage driveway providing off street parking for several cars and a large attractive garden to the rear.

Rickmansworth town centre has a wide range of boutique shops, coffee houses,

restaurants and the major supermarkets. The Metropolitan and Chiltern line train services connects you to London Baker Street, Marylebone Station and beyond. The M25 motorway is available at both junction 17 and 18 connecting you to the national motorway network. Major London airports are also within reach. The area is well served for good quality private and state schools for all ages. Chorleywood and Rickmansworth offer everything for the sporting individual from cricket, football, tennis, horse riding and golf. Water sports are also well catered for Rickmansworth Aquadrome.

Tenure – Freehold

Council Tax Band G

Energy Efficiency Rating – Band C

Local Authority – Three Rivers District Council

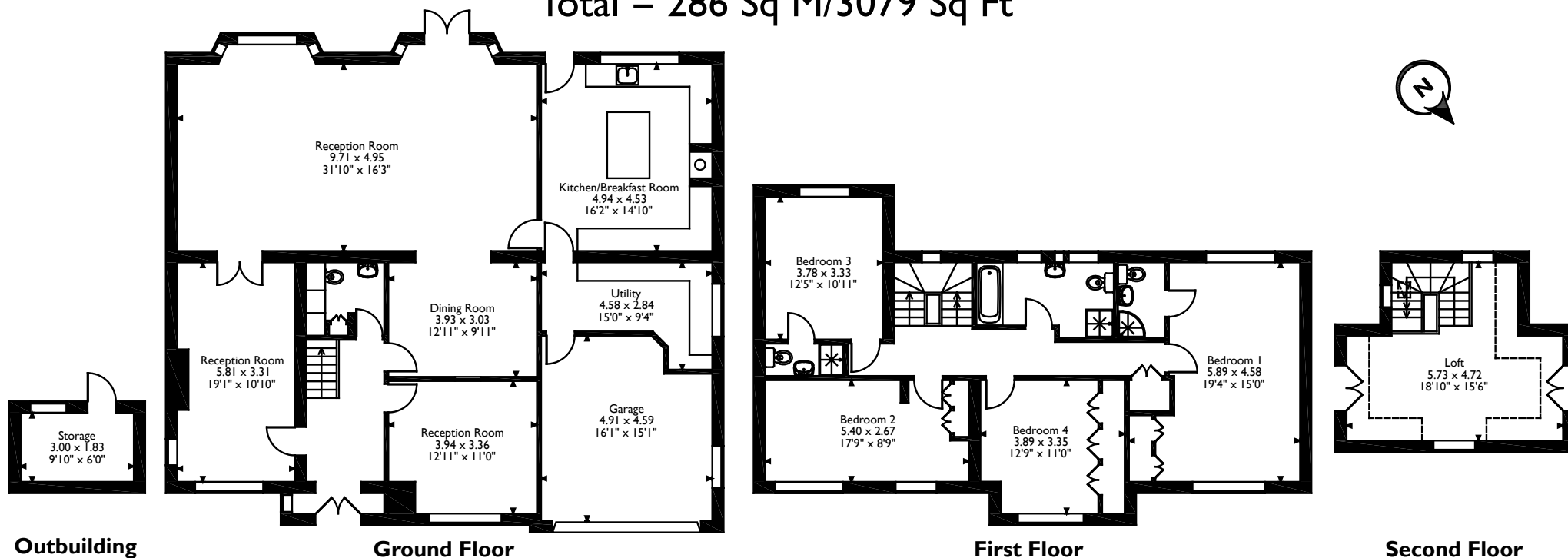








The Mount, Rickmansworth, Hertfordshire  
 Approximate Gross Internal Area  
 Main House = 281 Sq M/3025 Sq Ft  
 Outbuilding = 5 Sq M/54 Sq Ft  
 Total = 286 Sq M/3079 Sq Ft



Please note that the location of doors, windows and other items are approximate and this floorplan is to be used for illustrative purposes only. Unauthorized reproduction is prohibited.



130 High St, Rickmansworth WD3 1AB  
 Tel: 01923 777762 rickmansworth@robsonswb.com  
[www.robsonswb.com](http://www.robsonswb.com)



Important notice: Robsons, their clients and any joint agents give notice that 1: They are not authorised to make or give any representations or warranties in relation to the property either here or elsewhere, either on their own behalf or on behalf of their client or otherwise. They assume no responsibility for any statement that may be made in these particulars. These particulars do not form part of any offer or contract and must not be relied upon as statements or representations of fact. 2: Any areas, measurements or distances are approximate. Plot sizes and dimensions are taken from Promap and are approximate. The text, photographs and plans are for guidance only and are not necessarily comprehensive. It should not be assumed that the property has all necessary planning, building regulation or other consents and Robsons have not tested any services, equipment or facilities. Purchasers must satisfy themselves by inspection or otherwise.

