



Flat 2, 1 Coppice Drive, Harrogate

Harrogate

Guide Price £495,000



MYRINGS

Harrogate's Family Estate Agent



Flat 2

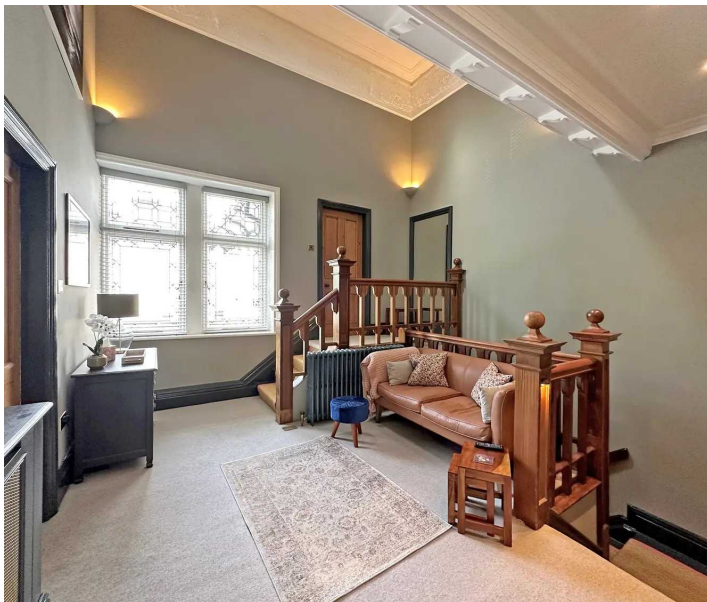
1 Coppice Drive, Harrogate

This magnificent first floor luxury apartment with private entrance, its own beautiful south facing garden and integral garage presents impressive accommodation and some stunning characterful features.

Council Tax band: B

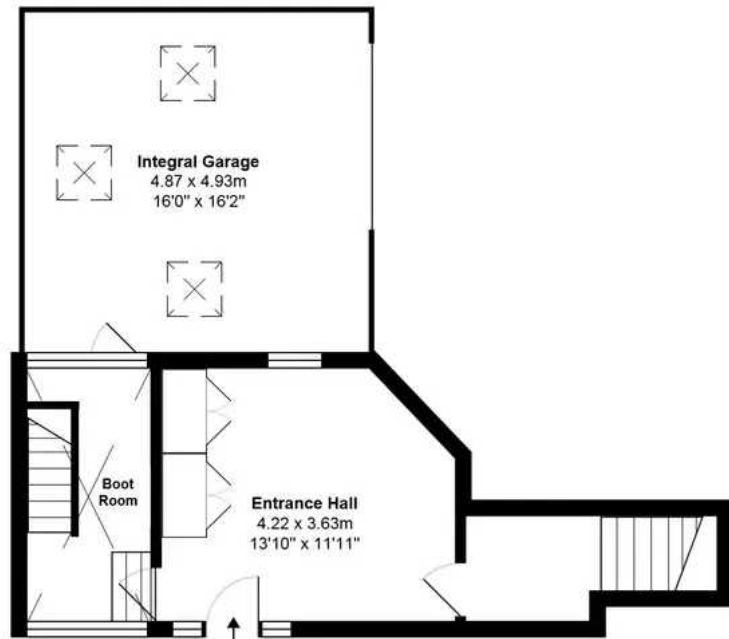
Tenure: Share of Freehold

- LARGE INTEGRAL GARAGE
- PRIVATE ENTRANCE
- IMPRESSIVE FEATURES
- MAGNIFICENT FIRST FLOOR APARTMENT
- SOUTH FACING GARDEN
- CLOSE TO TOWN CENTRE



MYRINGS





Ground Floor
Area: 26.4 m² ... 284 ft²



Total Area: 160.7 m² ... 1730 ft² (excluding integral garage)
All measurements are approximate and for display purposes only.



First Floor
Area: 134.3 m² ... 1446 ft²





Myrings Estate Agents

Myrings Estate Agents Ltd, 10 Princes Square - HG1 1LX

01423
566400

• enquiries@myringsestateagents.com • <http://myringsestateagents.com/>

