



Take flexible living to new levels

Discover The Waverley
at Ockford Park, Godalming
5 bedroom detached home





Flexible living spaces to suit your lifestyle - and life stage

The beauty of The Waverley at Ockford Park lies not only in its distinctive design over three floors, nor the exceptional quality of detail and specification throughout – but also in the way its flexible living spaces offer you endless options to suit your lifestyle and your life stage.

It's a home which gives you the freedom to express yourself, taking up all five bedrooms for a larger family, reserving one as a playroom or study while the children grow... or stretching out in style and fulfilling your dreams as a couple.

Open your mind's eye and explore what life could be like for you in The Waverley.

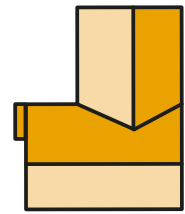


The Waverley

5 bedroom detached home

Plots 161 & 164 – as shown

Plots 162 & 163 – handed



Existing Properties



A lifestyle made for you

If you are looking for an escape from the hustle and bustle, and freedom to live life the way you want in a vibrant community with great connections, Ockford Park is made for you.

Just a mile from the thriving town of Godalming, in the heart of Surrey, Cala are creating a highly desirable neighbourhood with a new community centre, parks, play areas, green open spaces and allotments. Ockford Park. It's a place you'll feel happily at home.



Local photography



Stock photography



Photography from a previous Cala development

Enjoy the great outdoors

Nestled between the South Downs National Park and the Surrey Hills, Godalming is the ideal location for exploring the great outdoors - the award-winning Phillips Memorial Park is an oasis of calm just a few steps from the high street.

Follow the course of the River Wey along its towpath, stroll through unspoiled countryside at Loseley Park House & Gardens, cycle along hillside paths, climb up to The Devil's Punch Bowl – there are endless green spaces to enjoy.



Historic Godalming

The historic market town of Godalming lies just over 5 miles south west of Guildford, and is home to some characterful architecture like The Pepperpot, a lively High Street with a superb mix of familiar brands and independent stores and Wharf Retail park with supermarkets.

Along with a traditional weekly market, there's a monthly Farmer's Market - a family-friendly foodies paradise. With fast connections by rail and road it's easy to get around the local towns and into London too.



Activities for all

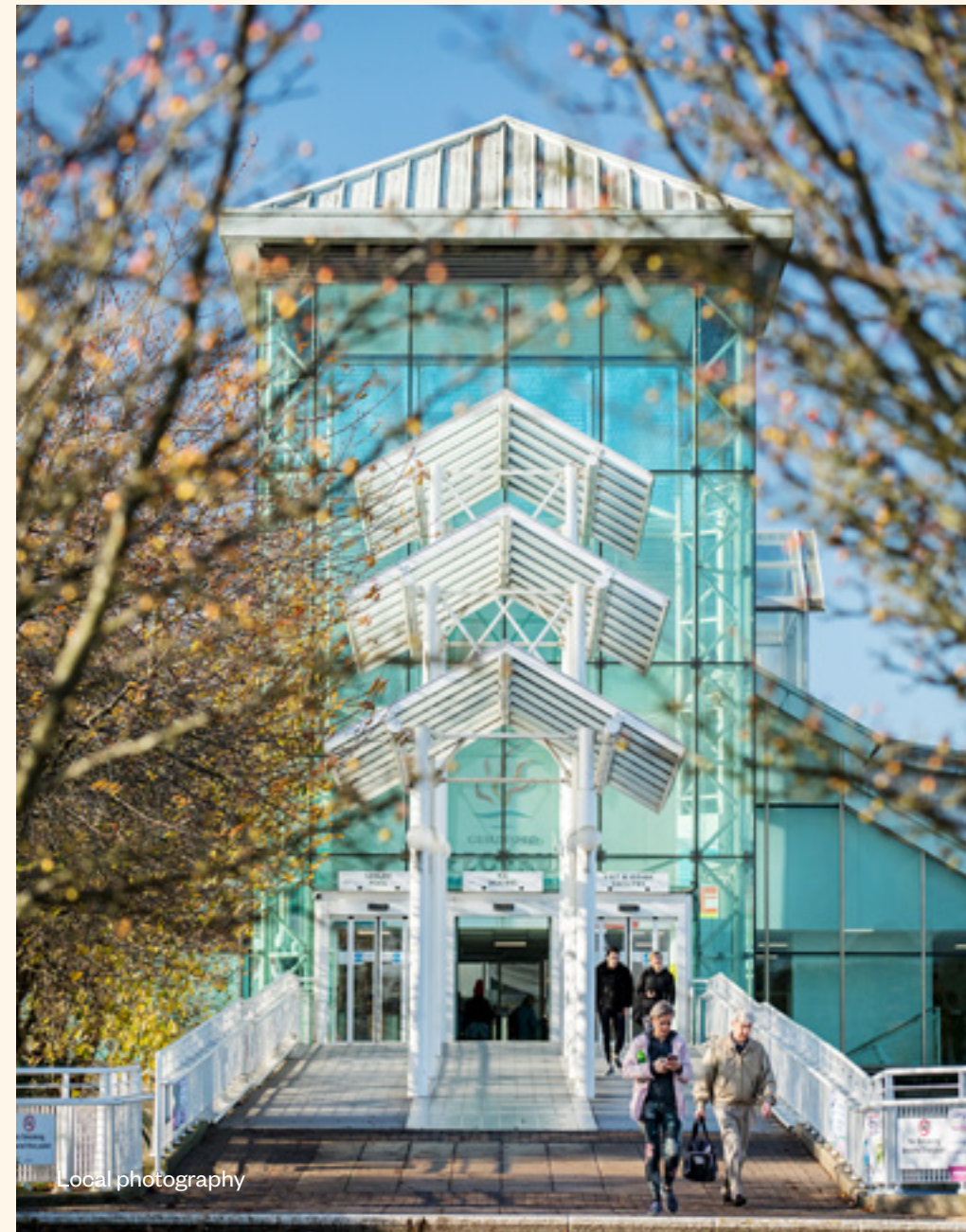
From swimming to ice-skating, gym classes to ten-pin-bowling, between them Guildford Spectrum and Godalming Leisure Centre tick almost every fitness box - offering a wide range of active and fun options for all ages.

There's a great variety of sports, leisure and social options, including Milford Golf Club, and a wonderful choice of restaurants, relaxing walks, family activities and events in the park.

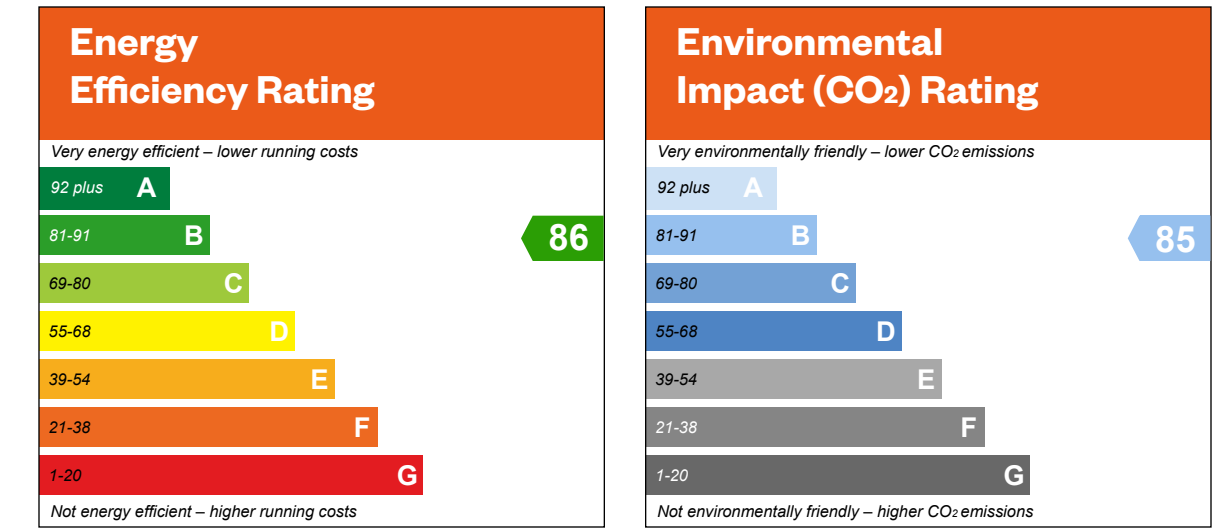


A great start in life

Godalming offers an excellent choice of schools, including St. Hilary's Preparatory School, St. Edmunds Catholic Primary School and St. Mark and All Saints Primary School which is just a stones throw away from Ockford Park. Godalming College, one of the highest performing 6th form colleges in the country, is just one mile away - while private education can be found at Charterhouse, one of the UK's leading independent boarding schools.



The Waverley - A home that grows with you

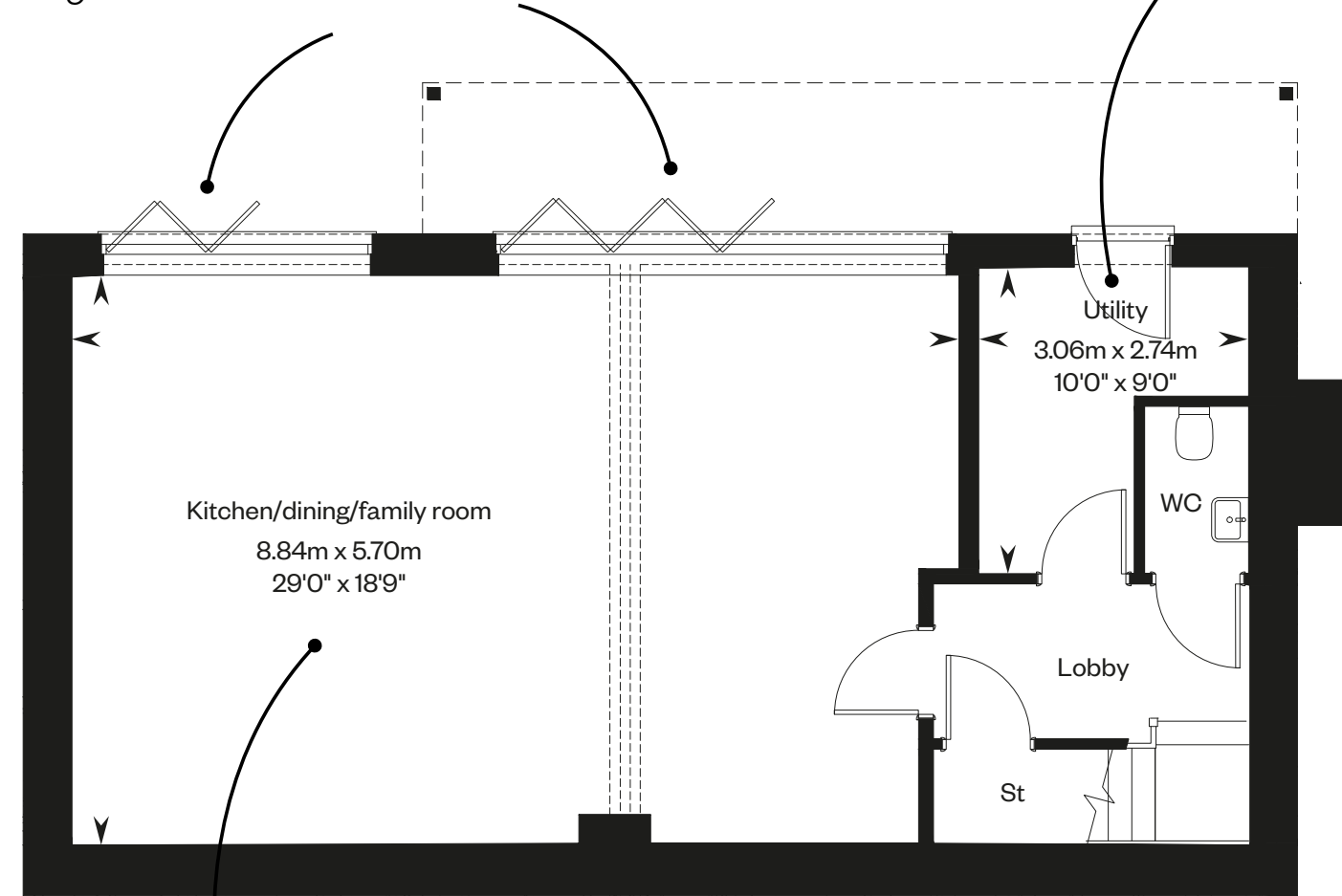


The bi-fold doors provide a focal point combining the comfort of the indoors with the freshness and brightness of the outdoors

The isolation of the Utility helps to separate any noisy household chores

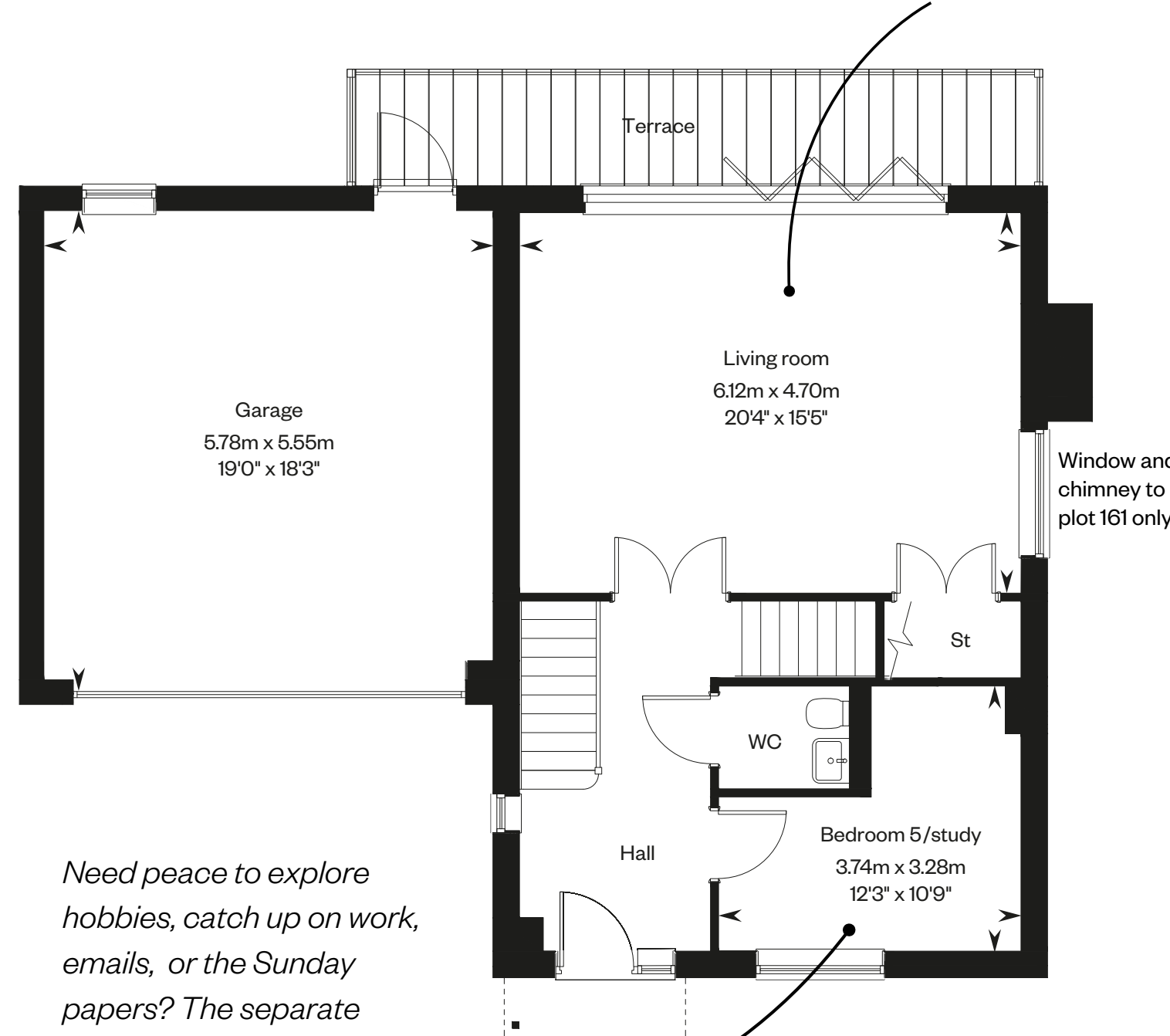
Want to escape from the hustle and bustle of family life? The separate living room provides a quiet haven to enjoy your favourite films and TV shows

There's plenty more room on the top floor. In addition to the main bedroom there are a further 3 bedrooms, one with en suite, plus a family bathroom.



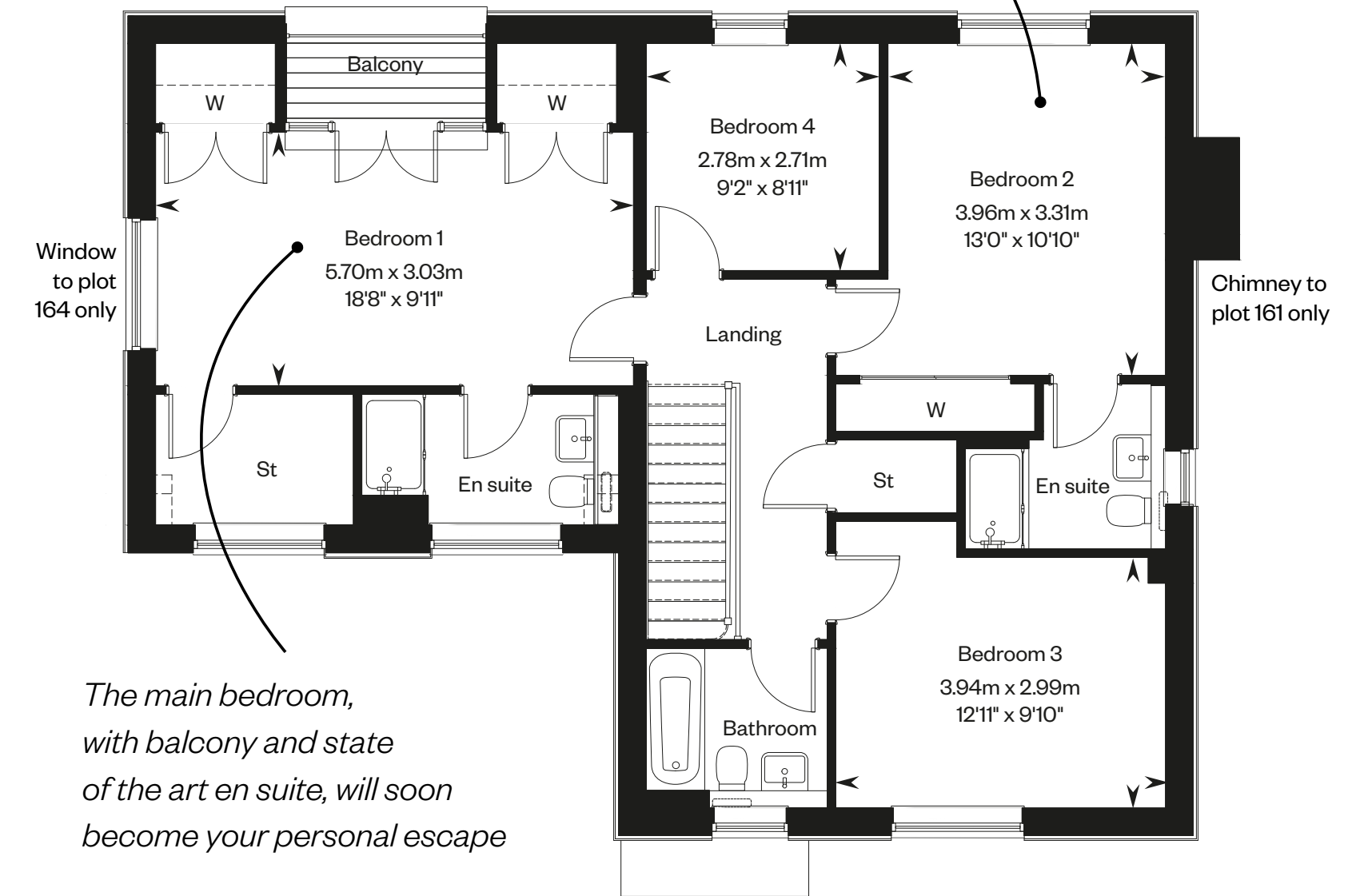
Lower ground floor

The generously sized open plan kitchen/dining/family area removes all barriers to fun nights in with family or friends



Ground floor

Need peace to explore hobbies, catch up on work, emails, or the Sunday papers? The separate study offers the perfect quiet spot



First floor

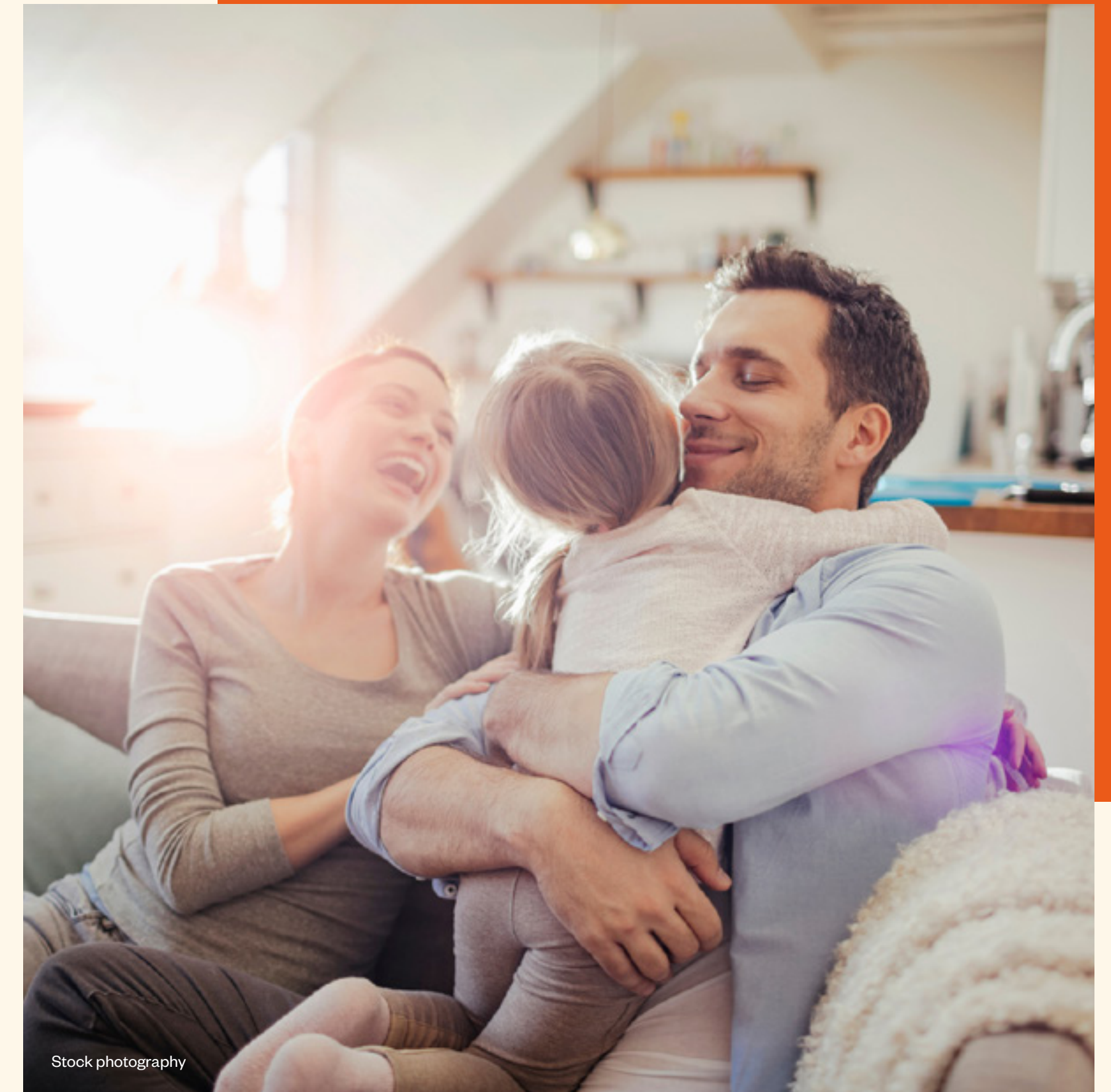
The main bedroom, with balcony and state of the art en suite, will soon become your personal escape

Living life together as a young family

With a gloriously expansive open plan kitchen, dining room and family room on the lower ground floor, you have the ideal space for a growing family to live, laugh, cook, eat and play together.

There are bi-fold doors covering the width of the room to the garden. So while the kids enjoy the fresh air, it's easy to keep an eye on them.

In the evening, relax together in the terraced ground floor living room or retire to the study. When it's time for sleep there's a sumptuous main bedroom with en suite and a balcony – and three more bedrooms that are perfect for toddlers to teens.





Stock photography



Showhome photography

Everyone has their own space, even in a larger family

The adaptability of The Waverley makes it perfect for a larger family – the ground floor study can become a fifth bedroom and there's plenty of room (and loos!) on the first floor, with two en suites and a family bathroom. So everyone can enjoy their own private space.

The flexibility of the living areas comes into its own too – busy and lively eating and playing together on the lower ground during the day maybe, while in the evening the adults can chill out in the living room as the kids do their own thing and entertain friends down stairs in the kitchen/dining/family room.

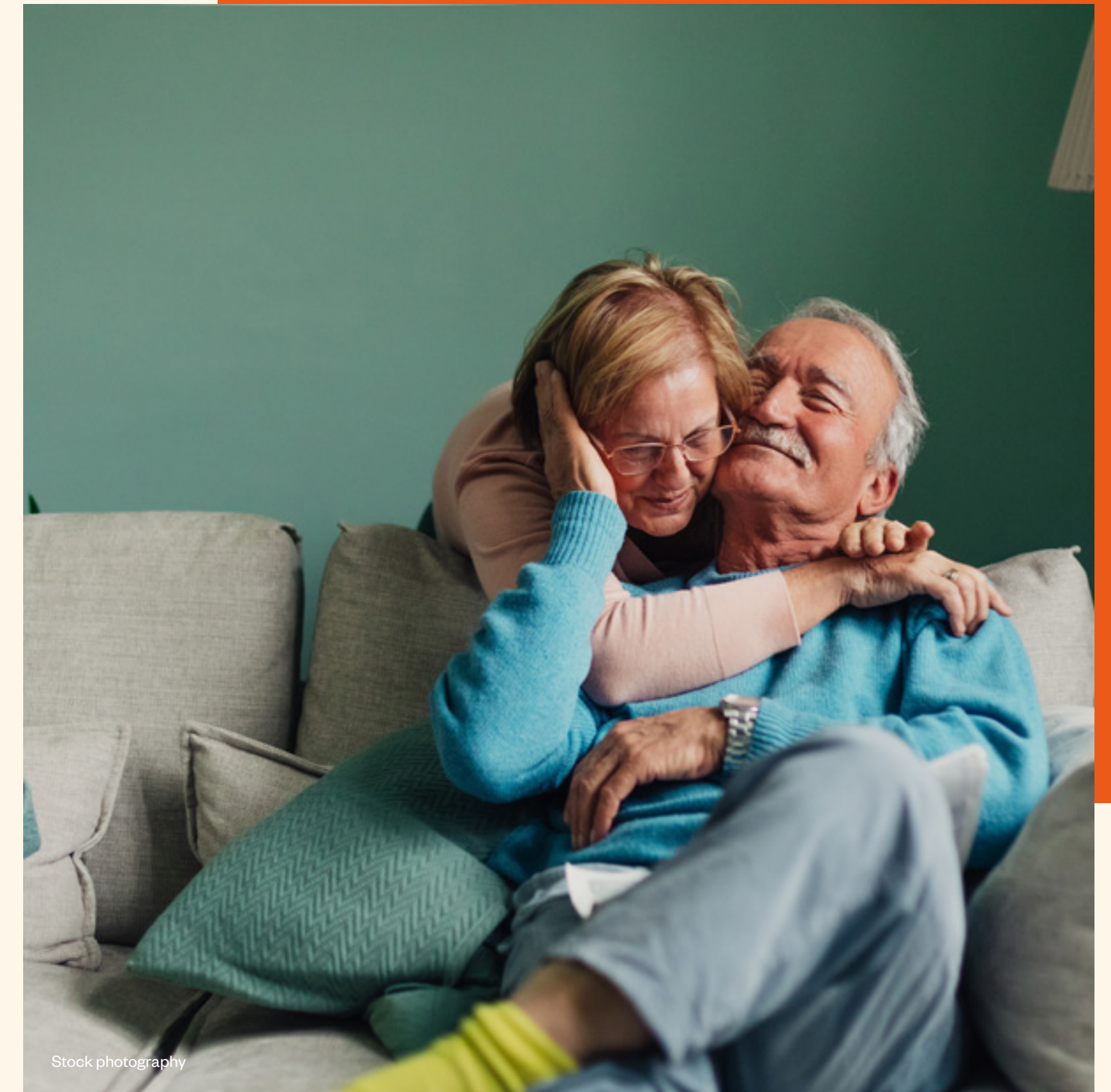


Showhome photography

Freedom to be yourself – and also entertain

For a couple who want the space to stretch out, do their own thing and also have room to entertain family and friends, The Waverley is an adaptable 'blank canvas'. Study room? Hobby or craft room? Office space to run a business or work from home? Maybe a gym, too?

The lower ground kitchen/diner/family room, with its double folding doors out to the garden is perfect for dinner parties as everyone can chat while food and drink are being prepared. The lounge a relaxing, light filled getaway with a terrace to take in the fresh air – and upstairs, well, the main bedroom is a haven of luxury and there's lots of room for guests and family to stay too.



A high specification as standard

Kitchens

Busy homes have big demands, so we've taken the pressure off meal times with Bosch hobs and oven space. Friends or family gathering? Cater for even the largest dinner party, with a built-in Bosch dishwasher and clean up in no time. We all have our 'Where can we put that?' moments. The utility bench in the garage also helps with additional storage for household chores. Also, the ground floor and lower ground floor are fitted with under floor heating for those chilly evenings.

Bedrooms

With generous proportions, your very own dressing space and a fitted wardrobe, the main bedroom is your go-to sanctuary. The addition of a luxurious en suite puts a desirable end to morning rush hour queues for the family bathroom.

Bathrooms

Wake up with a refreshing shower or wind down in a relaxing bath in your high specification bathroom, complete with full-height Porcelanosa tiling, chrome towel warmers and practical storage space.

External

As soon as the sun appears your outdoor space is good to go. Last minute BBQ's are no problem with a generous patio, external taps and a 1.8m privacy fence.

Security

It should come as no surprise to learn that your safety and security are our priority and that's why every home comes with mains-wired smoke detectors and battery operated CO detectors.





Welcome to your new home

Ockford Park,
Aarons Hill, Godalming,
Surrey, GU7 2LG

[Click here to arrange your viewing](#)



Stock photography