



Kingside, Grove

Guide Price £350,000

Wantage

Simpsons

The Proactive Agent




SCAN THE
QR CODE
FOR DETAILS

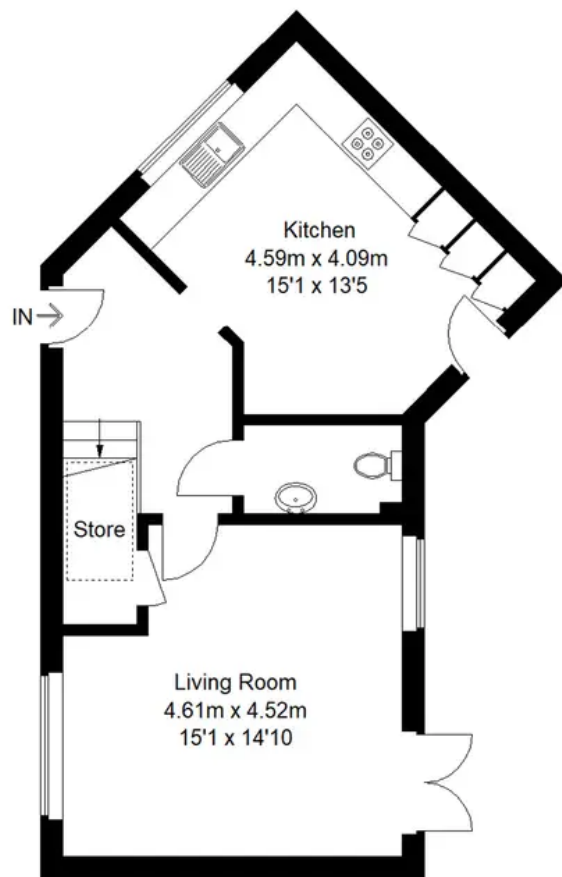




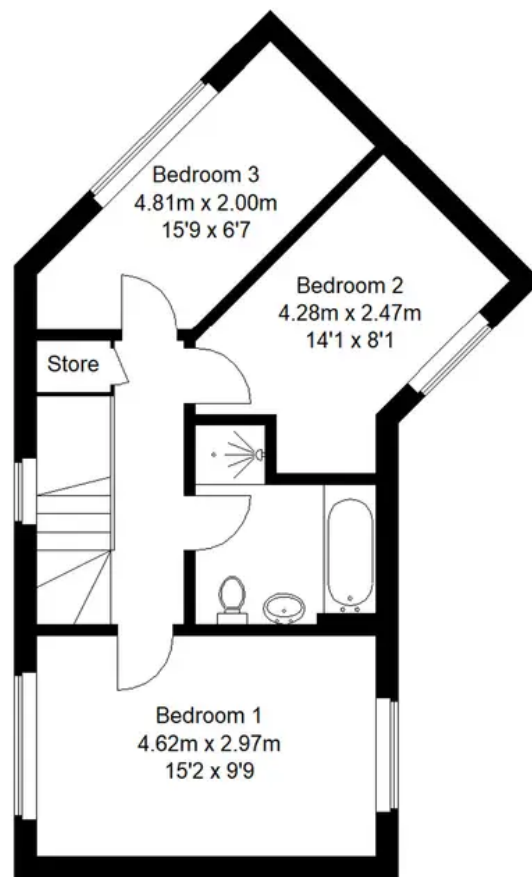
Kingside, OX12

Approximate Gross Internal Area
97.0 sq m / 1044 sq ft
Garden Area = 85.2 sq m / 917 sq ft
For identification Only - Not To Scale

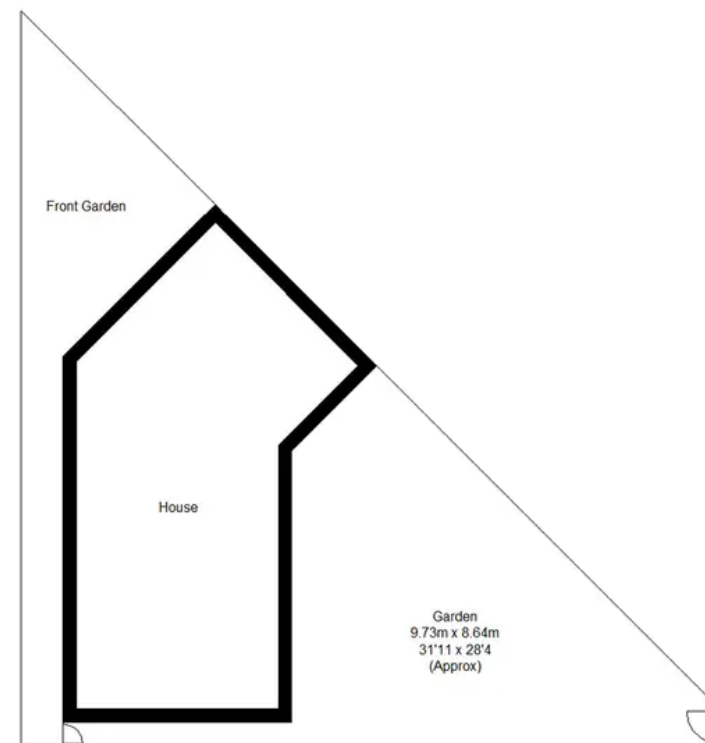
 = Reduced headroom
below 1.5 m / 5'0



Ground Floor



First Floor



Kingside

Grove, Wantage

Built over 5 years ago by Bellway Homes this spacious three bedroom home is conveniently located within easy reach of local amenities, shops and schools.

Tenure: Freehold

- Single garage and off street parking
- No onward chain
- Built by Bellway Homes
- Located on the popular Grove Meadows development



SCAN THE
QR CODE
TO BOOK
YOUR VIEWING



