



LAWRENCE RAND

Wingfield Way, Ruislip

£475,000



Wingfield Way

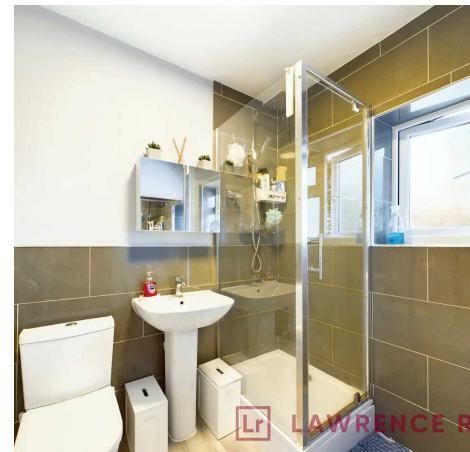
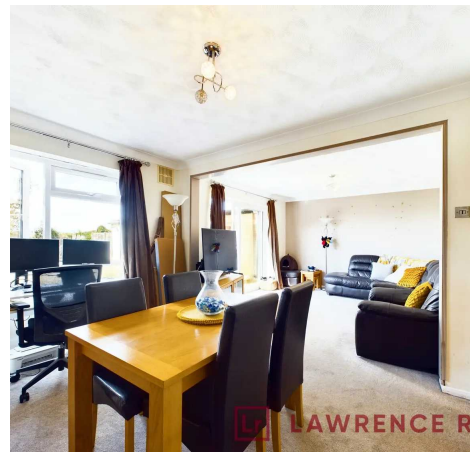
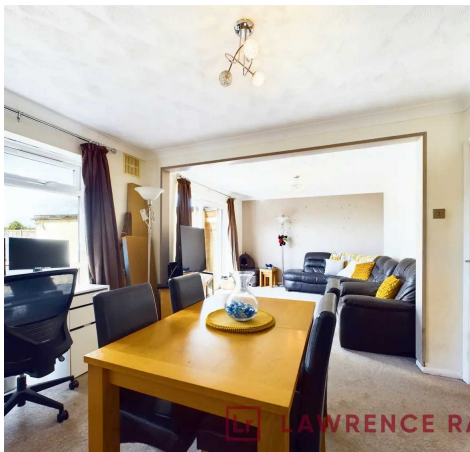
Ruislip, Ruislip

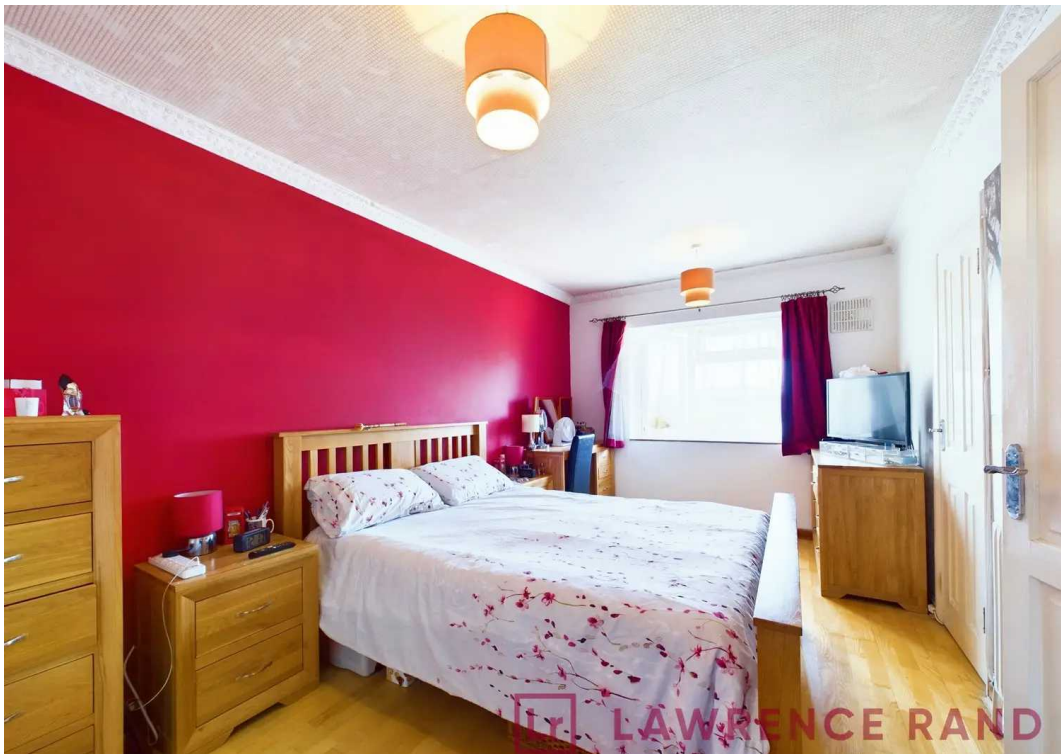
A larger style two-double bedroom end-of-terrace house situated on this quiet residential road. The property is presented in good condition throughout with modern kitchen and bathroom and there is potential to extend.

Council Tax band: D

Tenure: Freehold

- Two Double Bedrooms
- Reception Room
- Potential to Extend (stpp)
- Walking Distance to Amenities
- Great Transport Links
- Largs Garden







Ground Floor Building 1



Floor 1 Building 1



Ground Floor Building 2

Approximate total area⁽¹⁾

884.49 ft²

82.17 m²

(1) Excluding balconies and terraces.

While every attempt has been made to ensure accuracy, all measurements are approximate, not to scale. This floor plan is for illustrative purposes only.



Lawrence Rand

Lawrence Rand, 106 Victoria Road - HA4 0AL

01895 632211

Info@lawrence-rand.co.uk

www.lawrence-rand.co.uk/



LAWRENCE RAND