







## Property Description

### MAIN DESCRIPTION

A PRETTY DETACHED COTTAGE SITUATED IN THIS CONVENIENT LOCATION CLOSE TO ALL OF THE TOWNS AMENITIES. THREE BEDROOMS, TWO BATHROOMS AND TWO RECEPTION ROOMS THIS WILL MAKE SOMEONE A LOVELY HOME. This double fronted detached property when briefly described comprises, entrance hall, front facing lounge, front facing separate dining room, kitchen, utility, bathroom and rear hall to the ground floor. On the first floor are three bedrooms and shower room. To the rear of the property is an enclosed yard.

### ENTRANCE HALL

### LOUNGE

12' 3" x 11' 8" (3.73m x 3.56m)

### DINING ROOM

12' 3" x 11' 8" (3.73m x 3.56m)

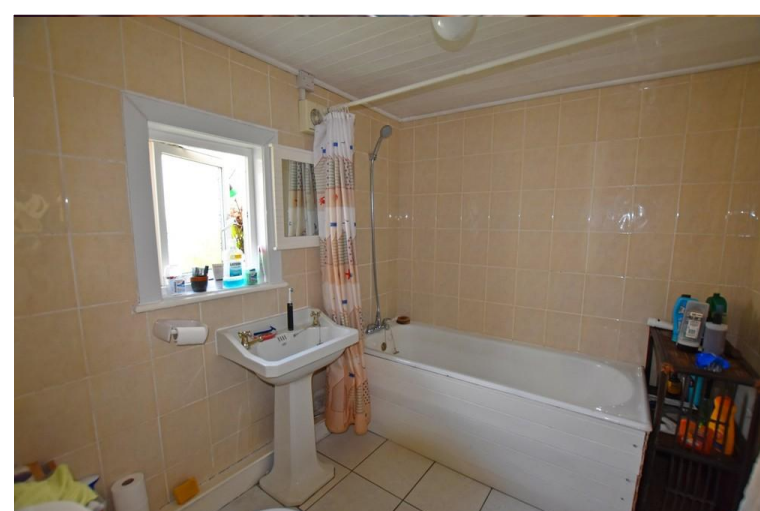
### KITCHEN

11' 10" x 5' 10" (3.61m x 1.78m)

### UTILITY ROOM

### BATHROOM

### REAR HALL



### LANDING

### BEDROOM

12' 3" x 11' 8" (3.73m x 3.56m)

### BEDROOM

12' 3" x 8' (3.73m x 2.44m)

### BEDROOM

11' 6" x 5' 8" (3.51m x 1.73m)

### SHOWER ROOM

### REAR YARD

