



Unit 4 & 5

2 Lord Street, Watford, Hertfordshire, Hertfordshire, WD17 2LQ

**Double fronted unit,
office/retail use for sale/to
let.**

970 sq ft
(90.12 sq m)

- RETAIL/OFFICE UNIT TO LET OR FOR SALE
- GLAZED SHOP FRONT
- SUSPENDED CEILING, KITCHENETTE AND TOILET FACILITIES
- BOTH UNITS HAVE AIR CONDITIONING AND HAVE BEEN REFURBISHED TO A HIGH STANDARD
- THE UNIT FRONTAGE FACES THE A411 WATFORD RING ROAD

Unit 4 & 5, 2 Lord Street, Watford, Hertfordshire, Hertfordshire, WD17 2LQ

Summary

Available Size	970 sq ft
Rent	£25,000.00 per annum
Price	£350,000.00
Rates Payable	£9,100 per annum
Service Charge	N/A
Car Parking	N/A
Estate Charge	N/A
EPC Rating	Upon enquiry

Description

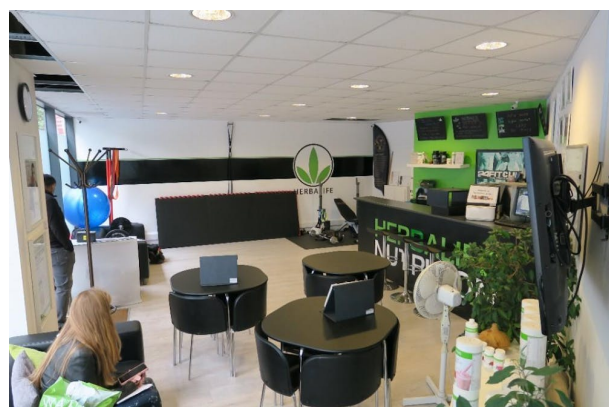
The units have the benefit of a glazed shop front, suspended ceiling, kitchenette and toilet facilities. In addition, both units have air conditioning and have been refurbished to a high standard throughout.

Location

The property comprises of a double fronted retail unit facing Queens Road conveniently located on a walkway which leads into Watford town centre. The unit frontage faces the A411 Watford Ring Road meaning that the premises have great prominence to a number of vehicles accessing the wider town centre.

Accommodation

Name	sq ft	sq m	Availability
Ground	970	90.12	Available
Total	970	90.12	



Viewing & Further Information



Lily O'Donnell

020 8429 9009 | 07522 700508

lily@davidcharles.co.uk

The above information contained within this email is sent subject to contract. These particulars are for general information only and do not constitute any part of an offer or contract. All statements contained therein are made without responsibility on the part of the vendors or lessors and are not to be relied upon as statement or representation of fact. Intending purchasers or lessees must satisfy themselves, by inspection, or otherwise, as to the correctness of each of the statements of dimensions contained in these particulars. Generated on 16/04/2024