



A BRIGHT, MODERN & WELL-PRESENTED 2 BEDROOM HOME WITH AN OUTBUILDING

Tudor Way, Mill End, Rickmansworth, WD3 8JB



**ENTRANCE HALLWAY • GUEST WC • LOUNGE •
SNUG • MODERN KITCHEN • DINING ROOM
• TWO DOUBLE BEDROOMS • THREE PIECE
FAMILY BATHROOM • LARGE SOUTH-FACING
REAR GARDEN • IMPRESSIVE OUTBUILDING •
OFF-STREET PARKING**

Description

A well-appointed, two bedroom home offering modern, vibrant interiors with an impressive outbuilding, situated within easy reach of local schools, perfect for families.

The ground floor comprises an inviting entrance hallway with stairs to the first floor and a guest WC. Off the hallway is a good-size lounge featuring a character fireplace, with an adjoining snug looking out onto the garden. A modern fitted kitchen completes the ground floor, with plenty of storage space, and integrated hob & oven, and a generous dining area. Both the snug and the kitchen / dining room have patio doors opening out to the garden, allowing plenty of natural light to flood in. To the first floor there are two bright and airy double bedrooms and a three-piece family bathroom.

Furthermore, this property has the added benefit of an impressive outbuilding with a WC, perfect for a home office, gym or studio.





Externally this delightful family home boasts a sizeable (approximately 100ft), south-facing rear garden that is laid to lawn with a patio area. To the front there is a driveway allowing off-street parking.

Location

Rickmansworth town centre is within easy reach providing a wide choice of boutique shops, coffee houses, restaurants and popular supermarkets. For commuters, the Metropolitan and Chiltern train lines connect to London Baker Street and beyond, with the M25 available at Junction 18 connecting to the national motorway network. Major airports are also within reach.

The area is well served by good quality private and state schools for all ages, with Chorleywood offering everything from cricket, football, tennis, horse riding and golf. Water sports are also available at the Aquadrome in Rickmansworth.

Additional Information

Guide Price: Price on Application

Tenure: Freehold

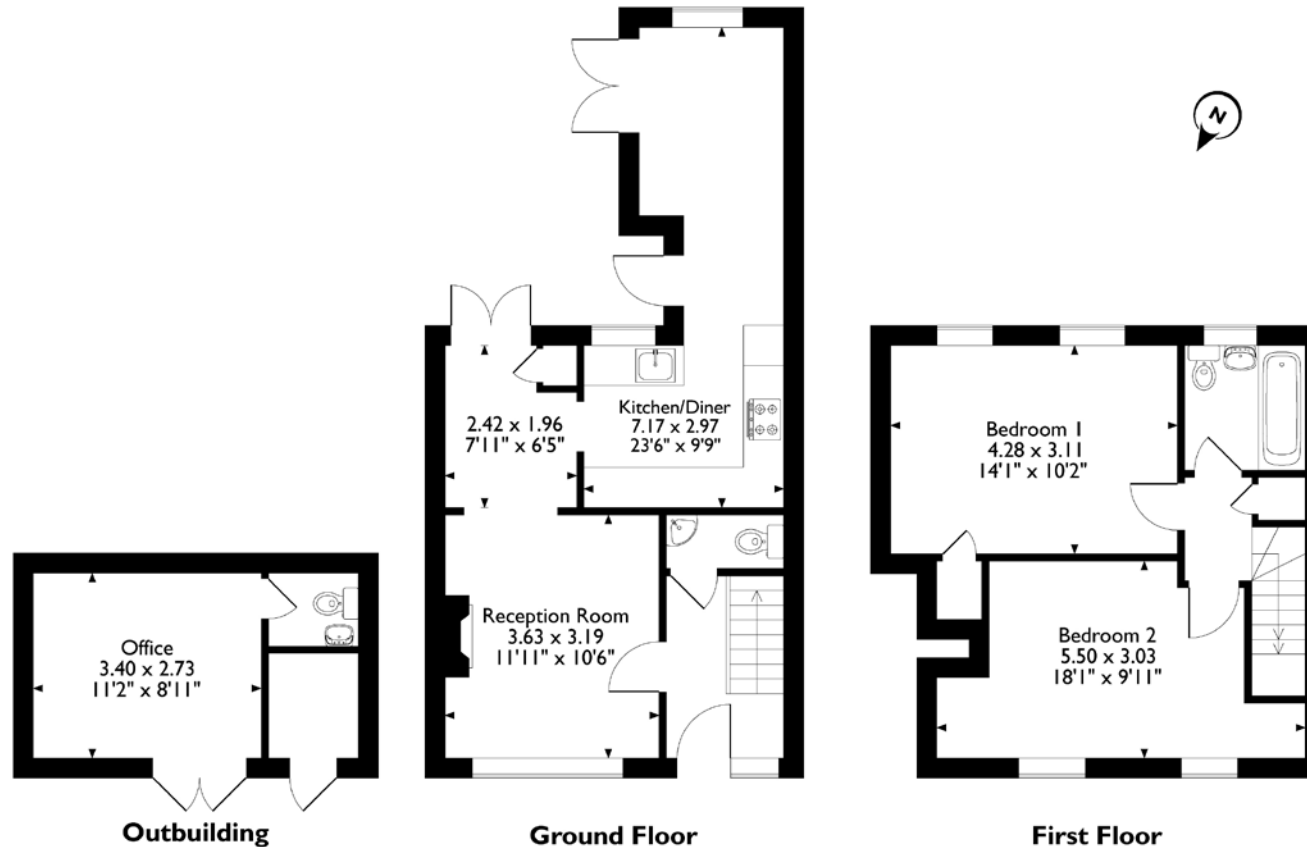
Local Authority: Three Rivers District

Council Tax: Band C

Energy Efficiency Rating: Band D



Tudor Way, Mill End, Rickmansworth, Hertfordshire
Approximate Gross Internal Area
Main House = 75 Sq M/808 Sq Ft
Outbuilding = 13 Sq M/140 Sq Ft
Total = 88 Sq M/948 Sq Ft



Please note that the location of doors, windows and other items are approximate and this floorplan is to be used for illustrative purposes only. Unauthorized reproduction is prohibited.



130 High Street, Rickmansworth, Hertfordshire, WD3 1AB
Tel: 01923 777 762 Rickmansworth@robsonswb.com

www.robsonswb.com

www.
the
londonoffice.co.uk
40 ST JAMES'S PLACE SW1