



Falcon Crescent, Flitwick, Bedfordshire, MK45 1LY

This well presented three bedroom semi detached home is situated in a popular residential development overlooking a small green and within walking distance to Flitwick town centre, the train station and local schools. The property has been improved and updated and enjoys light and airy family accommodation. Outside the rear garden easterly facing and has a laid to lawn area as well as extensive decking ideal for outdoor dining. A timber built summer house has power connected and is currently used for storage but offers excellent scope to be upgraded and used as a home office or man cave if desired. A single garage is located in a nearby block that provides sheltered parking or additional storage space.



This property is presented by Duncan Stead - a Love Homes property expert with over 25 years' experience.

Find out more about this property by scanning the QR code.



0.5



3



2



1

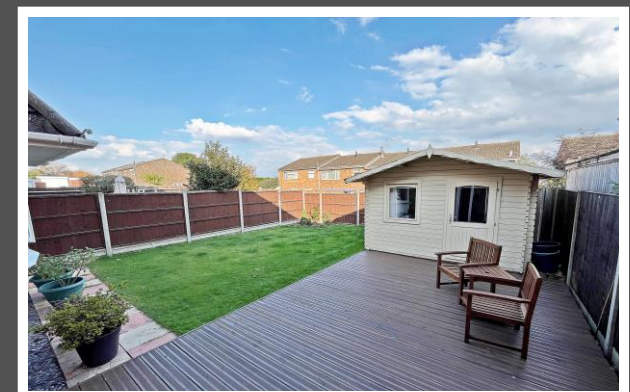
Tenure: Freehold

Council Tax: C

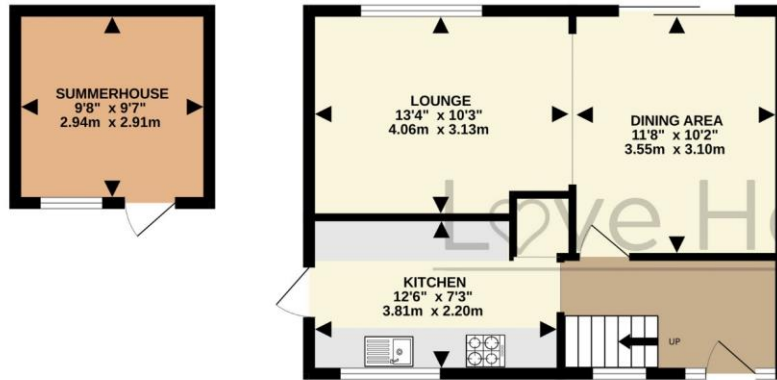




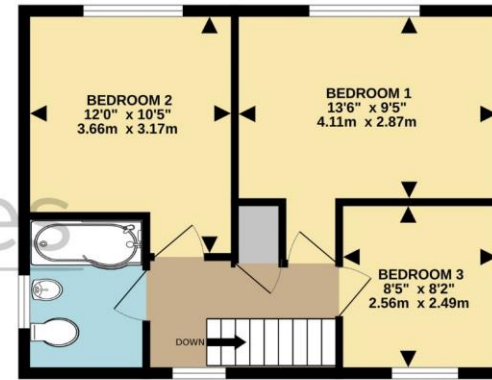
"Falcon Crescent is such a convenient place to live because everything is close by. Kids can walk to schools, even a quick dash to the train station or shops only takes about 5 minutes. The open plan layout makes this property really light and airy even on a miserable day and the summerhouse has been really useful, it has power connected and could be insulated and used as a home office if needs be. It's a lovely area and being so close to the countryside and "The Mount" is really handy for taking the dog for walkies!"



GROUND FLOOR
515 sq.ft. (47.9 sq.m.) approx.



1ST FLOOR
428 sq.ft. (39.8 sq.m.) approx.



TOTAL FLOOR AREA : 943 sq.ft. (87.6 sq.m.) approx.
 Drawn by Love Homes for illustrative purposes only. Measurements and areas shown are approximate.
 Made with Metropix ©2023

Score	Energy rating	Current	Potential
92+	A		
81-91	B		85 B
69-80	C		
55-68	D	67 D	
39-54	E		
21-38	F		
1-20	G		



These particulars are set out as a general outline in accordance with the Property Misdescriptions Act (1991) only for the guidance of intending purchasers or lessees, and do not constitute any part of an offer or contract. Details are given without any responsibility, and any intending purchasers, lessees or third parties should not rely on them as statements or representations of fact but must satisfy themselves by inspection or otherwise as to the correctness of each of them. We have not carried out a structural survey and the services, appliances and specific fittings have not been tested. All photographs, measurements, floor plans and distances referred to are given as a guide only and should not be relied upon for the purchase of carpets or any other fixtures or fittings. Gardens, roof terraces, balconies and communal gardens as well as tenure and lease details cannot have their accuracy guaranteed for intending purchasers. Lease details, service ground rent (where applicable) are given as a guide only and should be checked and confirmed by your solicitor prior to exchange of contracts. No person in the employment of Love Homes has any authority to make any representation or warranty whatever in relation to this property. Purchase prices, rents or other prices quoted are correct at the date of publication and, unless otherwise stated, are exclusive of VAT. We retain the copyright in all advertising material used to market this Property. All information is as advised by the seller and subject to change. Council tax bands can be subject to change by the local council.

5 The Russell Centre, Coniston Road, Flitwick, MK45 1QY
 Tel: 01525 713111

Email: flitwick@lovehomes.uk

www.lovehomes.uk



Love Homes