



44 Hereford Road, Maidstone

Offers in Region of £375,000



Introducing this charming 3-bedroom extended semi-detached house, impeccably presented and featuring a driveway for your convenience.

As you step inside, you'll be greeted by a generously sized hallway, setting the tone for the entire house. On the front side, there is a bright and inviting living room, perfect for family gatherings and relaxation.

Towards the rear of the ground floor, you'll find a snug area that seamlessly connects to a delightful conservatory. This sunlit space is versatile, ideal for use as a casual lounge or even a home office. The conservatory opens up to a dining room with direct access to the rear garden, making it perfect for indoor-outdoor entertaining.

Access to the kitchen can be conveniently gained through the snug area. The kitchen itself is well-equipped and thoughtfully designed to meet all your culinary needs. Additionally, there's a handy downstairs w.c. for added convenience.

Heading upstairs, you'll discover three spacious double bedrooms, each featuring built-in storage solutions. These bedrooms offer comfort, privacy, and ample room for customization to suit your lifestyle. Whether you need a home office, a nursery, or a guest room, you have the flexibility to create spaces that meet your unique needs.

Completing the first floor is a well-appointed family bathroom, perfect for unwinding after a long day.

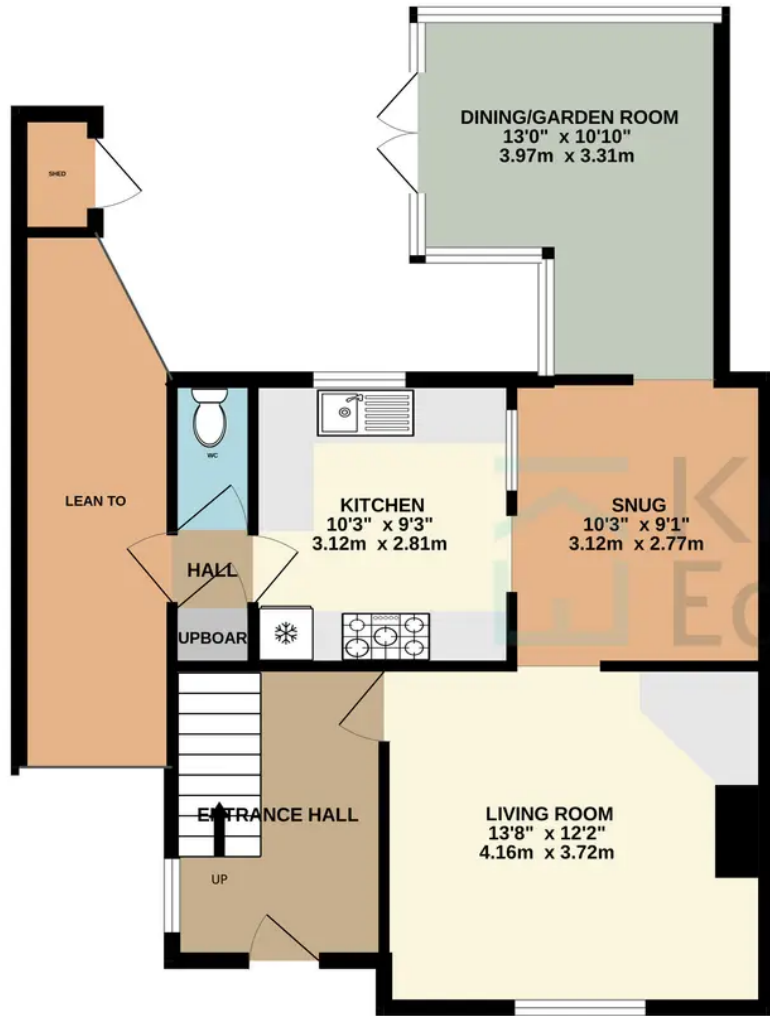
The rear garden is a delightful oasis, predominantly laid to lawn, providing a wonderful space for outdoor activities, gardening, or simply enjoying the fresh air. It's a fantastic area for family gatherings, barbecues, and relaxation.

At the front of the property, you'll find a spacious driveway with ample room for multiple vehicles. This feature ensures parking is never a hassle and provides convenience for you and your guests.

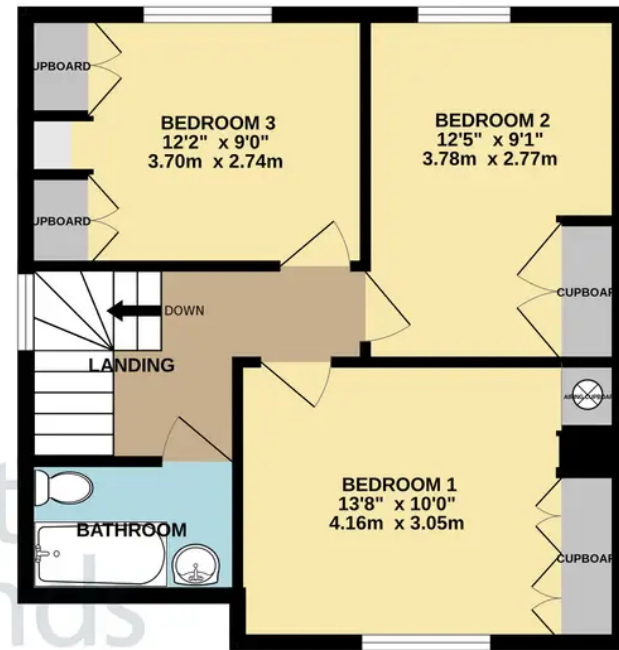
In summary, this well-maintained 3-bedroom semi-detached house offers spacious living, a great outdoor space, and parking convenience. It's a wonderful family home in an ideal location. Don't miss the opportunity to make it your own. Contact us today to arrange a viewing!



GROUND FLOOR
578 sq.ft. (53.7 sq.m.) approx.



1ST FLOOR
460 sq.ft. (42.8 sq.m.) approx.



TOTAL FLOOR AREA : 1038 sq.ft. (96.5 sq.m.) approx.

Whilst every attempt has been made to ensure the accuracy of the floorplan contained here, measurements of doors, windows, rooms and any other items are approximate and no responsibility is taken for any error, omission or mis-statement. This plan is for illustrative purposes only and should be used as such by any prospective purchaser. The services, systems and appliances shown have not been tested and no guarantee as to their operability or efficiency can be given.
Made with Metropix ©2023



Scan to
view
online!



Scan to
book a
viewing!

