

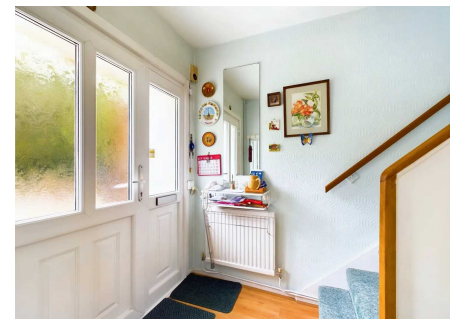


Lonsdale Drive, Enfield

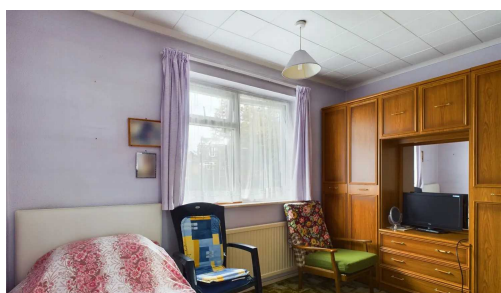
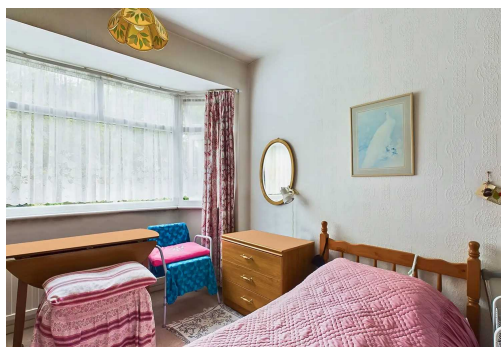
£750,000 Freehold

3 Bedroom Semi-Detached Family Home • 2 Bathrooms • 2 Separate Receptions • Utility Room • Garage and Own Driveway • Over 100ft. Rear Garden with Patio • Within Walking Distance to Oakwood Tube Station • Scope For Further Extension (STPP) • Council Tax Band: E • Close To Eversley, Grange Park and Merryhills Schools

Charming three-bedroom family home in a most sought after residential turning within a walking distance to Oakwood tube station and the picturesque Boxers Lake. The accommodation consists of two reception rooms, kitchen with separate utility room, downstairs wet room, 3 well proportionate bedrooms and a family bathroom. Situated in a tree and shrub-lined road with easy access to Enfield Town multiple shopping, Trent Park, whilst also in the catchment area of outstanding schools including Eversley, Grange Park and Merryhills Schools.

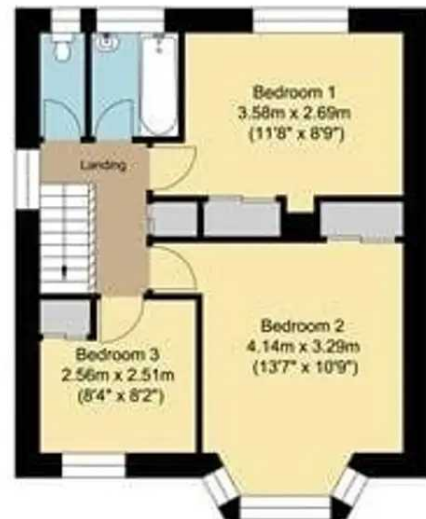


- 3 Bedroom Semi-Detached Family Home
- 2 Bathrooms
- 2 Separate Receptions
- Utility Room
- Garage and Own Driveway
- Over 100ft. Rear Garden with Patio
- Within Walking Distance to Oakwood Tube Station
- Scope For Further Extension (STPP)
- Council Tax Band: E
- Close To Eversley, Grange Park and Merryhills Schools





Ground Floor
Approximate Floor Area
694.48 sq. ft.
(64.52 sq. m)



First Floor
Approximate Floor Area
410.64 sq. ft.
(38.15 sq. m)

For illustration purposes only, not to scale

Services, appliances, and boundaries of the property have not been tested. Measurements are approximate and for descriptive purposes only. These particulars are a general guide and do not constitute a contract. Oyster Properties and its agents act in good faith. No employee has authority to provide representations or warranties regarding the property.

