



2 Harlequin Court, 6 Arla Place

Ruislip

£390,000

 **LAWRENCE RAND**

## 2 Harlequin Court

, Ruislip

A stunning two double-bedroom ground-floor apartment with a long lease, outside space and allocated parking. Harlequin Court is part of the 'Aria' development in South Ruislip with great access to the Central line and Chiltern Line station.

Council Tax band: D

Tenure: Leasehold

EPC Energy Efficiency Rating: B

EPC Environmental Impact Rating: A

- Ground Floor Apartment
- 2 Bedrooms
- Private Outside Space
- Short Walk to Shops & Station
- Close to Local Schools
- Allocated Parking
- Long Lease - 118 years



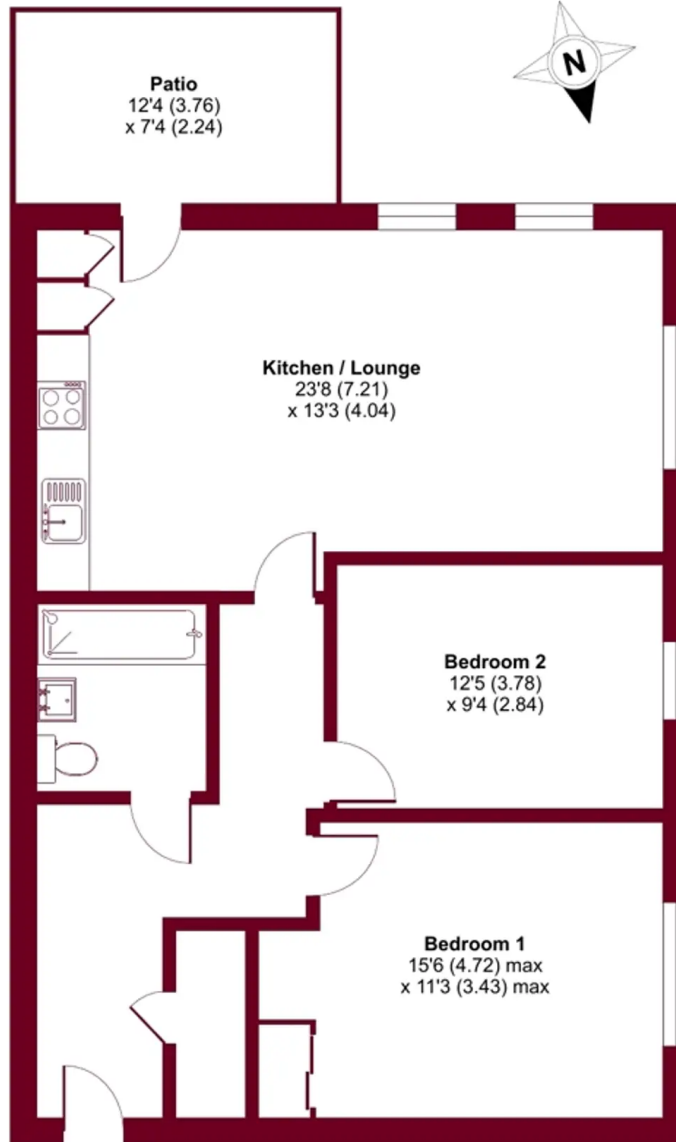




# Arla Place, Ruislip, Middlesex, HA4

Approximate Area = 812 sq ft / 75.4 sq m

For identification only - Not to scale



**GROUND FLOOR**



Floor plan produced in accordance with RICS Property Measurement Standards incorporating International Property Measurement Standards (IPMS2 Residential). © nichecom 2023. Produced for Lawrence Rand. REF: 969660



## Lawrence Rand

Lawrence Rand, 106 Victoria Road - HA4 0AL

01895 632211

[Info@lawrence-rand.co.uk](mailto:Info@lawrence-rand.co.uk)

[www.lawrence-rand.co.uk/](http://www.lawrence-rand.co.uk/)



**LAWRENCE RAND**