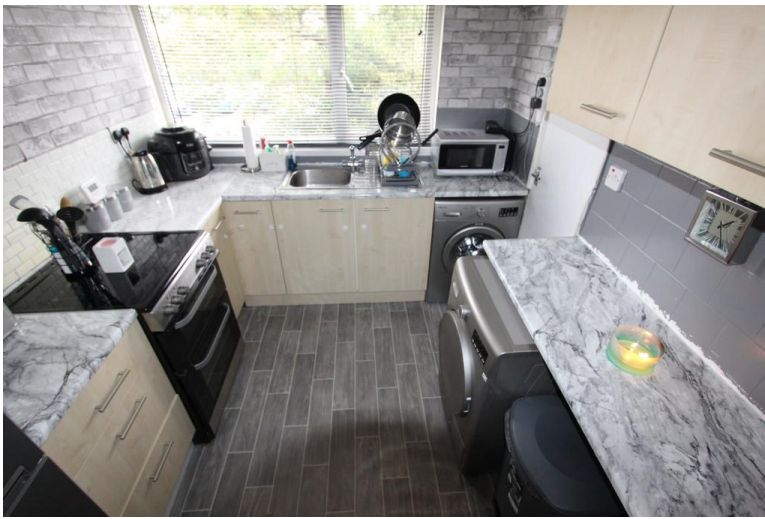




**Black and White**  
CLEARLY A BETTER SERVICE

72 LONGLEY WALK, CHELMSLEY WOOD , BIRMINGHAM, B37  
7SD ASKING PRICE OF £99,000





Calling all landlords !!!!

Looking to increase your portfolio?

This 2 Bedroom property is situated in the heart of chelmsley wood, close to schools, Shops and Transport links. This property is pre tenanted and has a current income of £575 pcm.

### Ground Floor

Entering via the Wooden front door

### Hallway

Housing a Storage cupboard and Doors to:

### Lounge 7.23m (23'9") x 3.25m (10'8")

Upvc Window to front, window to rear, two double radiators and various Power Points.

### Kitchen 3.52m (11'7") max x 2.52m (8'3")

Upvc Window to front, Storage cupboard and various Power Points.

### Bathroom

Fitted with a three-piece suite comprising of bath with Shower over, wash basin and low-level WC. Upvc double Glazed window.

### Bedroom 1 3.62m (11'11") x 3.40m (11'2")

Upvc Window to rear, double radiator and various Power Points.

### Bedroom 2 4.01m (13'2") x 2.99m (9'10")

Upvc Double Glazed Window to rear, double radiator and various Power Points.

