



74 Summerson Lodge, 94 Alverstone Road  
Southsea

Offers in Region of £160,000

 chinneckshaw







# 74 Summerson Lodge

Southsea

We are delighted to market this large, well appointed one bedroom retirement property in Summerson Lodge. With excellent facilities on site and attractive communal gardens we think this lovely flat would make you a comfortable home if you were looking to downsize.

You'll see a spacious entrance hall with access to the bathroom, bedroom and living area plus a large storage cupboard with additional shelving and storage solutions. The large Lounge Dining Room is just lovely with lots of light coming from it's window which overlooks the well tended gardens below. It's a nice shape too and gives you plenty of furniture layout options. The kitchen is off this room and is well fitted with a modern range of wall and base cabinets including a brand new built in oven with self clean.

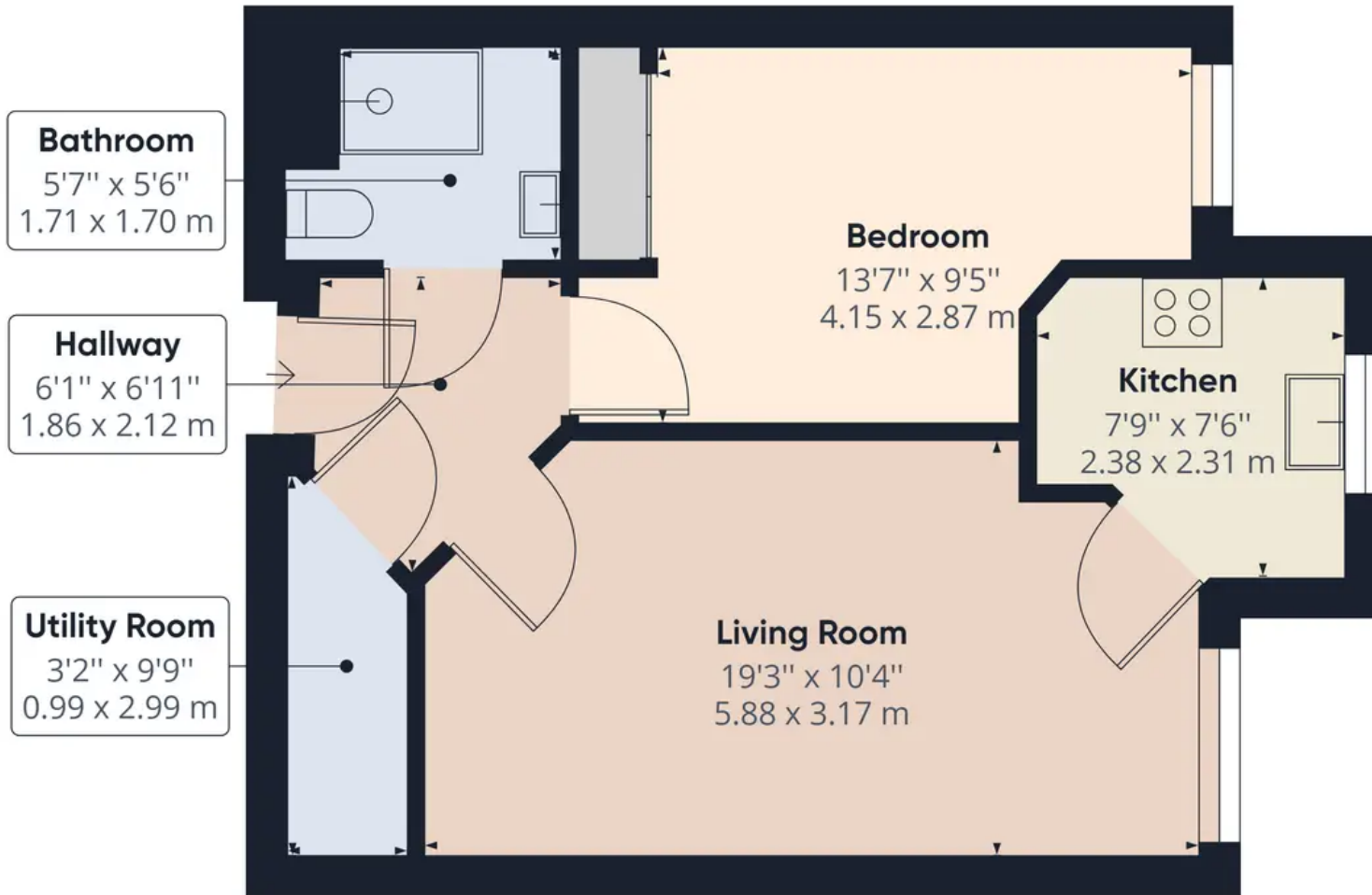
The Double Bedroom features a fitted double wardrobe and is a great size and well presented. The Shower Room is modern and well executed featuring a modern shower along with plenty of storage. Communal facilities are well catered for and include a residents lounge, laundry room, residents parking, lift and a guest suite which is available at a reasonable cost per night and subject to availability.

Agents note - This property offers no forward chain.

Council Tax band: B

Tenure: Leasehold





**Approximate total area<sup>(1)</sup>**

469.19 ft<sup>2</sup>

43.59 m<sup>2</sup>

(1) Excluding balconies and terraces

While every attempt has been made to ensure accuracy, all measurements are approximate, not to scale. This floor plan is for illustrative purposes only.

**GIRAFFE 360**





## Chinneck Shaw

Bridge House, Milton Road, Portsmouth – PO3 6AN

023 9282 6731

[hello@chinneckshaw.co.uk](mailto:hello@chinneckshaw.co.uk)

[www.chinneckshaw.co.uk/](http://www.chinneckshaw.co.uk/)

Chinneck Shaw, Bridge House, Milton Road, PO3 6AN Consumer Protection from Unfair Trading Regulations 2008: These details are for guidance only and complete accuracy cannot be guaranteed. If there is any point which is of particular importance, verification should be obtained. The do not constitute a contract or part of a contract. All measurements are approximate. No guarantee can be given with regard to planning permissions or fitness for purpose. No apparatus, equipment, fixture or fitting has been tested. Items shown in the photographs are NOT necessarily included. Interested Parties are advised to check availability and make an appointment to view before travelling to see a property.