

# Compton

---

**Finsbury Park**  
The Arts Building  
Morris Place  
N4 3JG

---

Unique Penthouse at the Arts Building. A Plug and Play Office Space located minutes away from Finsbury Park station.

---

**For Rent**  
4,737 ft<sup>2</sup>

---

020 7101 2020  
[compton.london](http://compton.london)



# Compton

---

## Finsbury Park

The Arts Building  
Morris Place  
N4 3JG

---

Unique Penthouse at the Arts Building. A Plug and Play Office Space located minutes away from Finsbury Park station.

---

**For Rent**  
4,737 ft<sup>2</sup>

---



## Location

The Arts Building is located only moments away from Finsbury Park station. It is located in the borough of Islington and is becoming a more popular and buzzy location for occupiers to work. The building is also in close proximity to Finsbury Park bus. Finsbury Park provides great way to access Londons West End and all the main hubs. The Arts Building also isn't far from Arsenal Station and Crouch Hill station, which gives you access to the Piccadilly line and London Overground as-well as the Victoria Line from Finsbury Park Station.

# Compton

---

## Finsbury Park

The Arts Building  
Morris Place  
N4 3JG

---

Unique Penthouse at the Arts Building. A Plug and Play Office Space located minutes away from Finsbury Park station.

---

**For Rent**  
4,737 ft<sup>2</sup>

---



# Compton

---

## Finsbury Park

The Arts Building  
Morris Place  
N4 3JG

---

Unique Penthouse at the Arts Building. A Plug and Play Office Space located minutes away from Finsbury Park station.

---

## For Rent

4,737 ft<sup>2</sup>



# Compton

---

## Finsbury Park

The Arts Building  
Morris Place  
N4 3JG

---

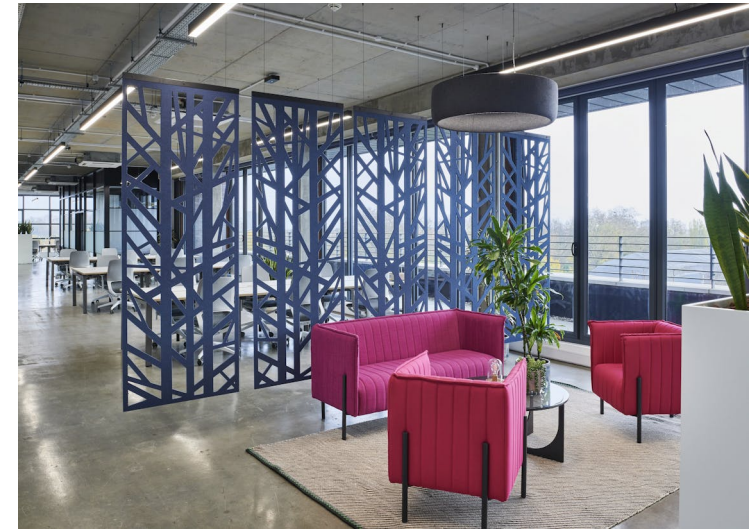
Unique Penthouse at the Arts Building. A Plug and Play Office Space located minutes away from Finsbury Park station.

---

## For Rent

4,737 ft<sup>2</sup>

---



# Compton

---

## Finsbury Park

The Arts Building  
Morris Place  
N4 3JG

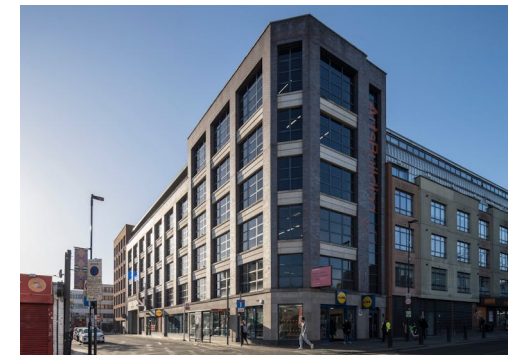
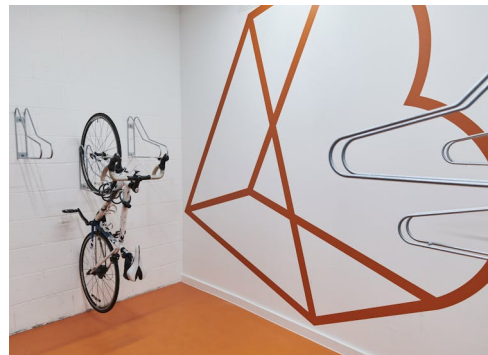
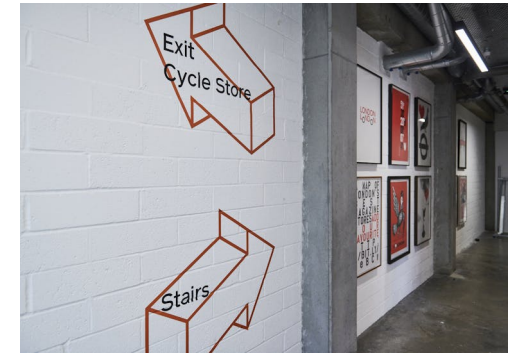
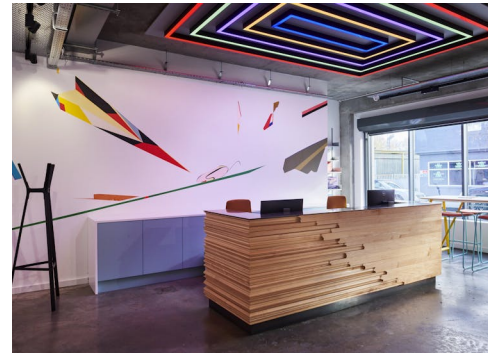
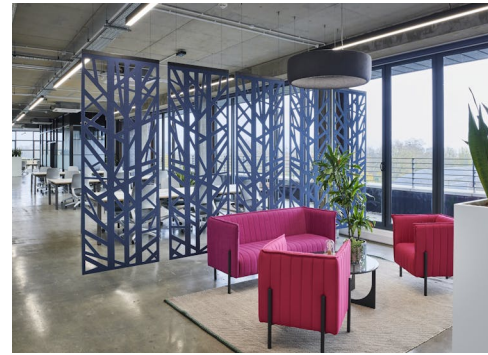
---

Unique Penthouse at the Arts Building. A Plug and Play Office Space located minutes away from Finsbury Park station.

---

**For Rent**  
4,737 ft<sup>2</sup>

---



# Compton

---

## Finsbury Park

The Arts Building  
Morris Place  
N4 3JG

---

Unique Penthouse at the Arts Building. A Plug and Play Office Space located minutes away from Finsbury Park station.

---

## For Rent

4,737 ft<sup>2</sup>

---

## Amenities

- Plug and Play Office Space
- Newly Refurbished
- Generous floor to ceiling heights
- Exposed Concrete Ceilings
- Communal Kitchen and Terrace
- Access to passenger lifts and goods lifts
- Amazing Natural Light
- High specification adjustable lighting system
- Excellent local amenities

---

## Description

This building was developed in 2014 and designed by the award winning practice DGA Architects. The office floor benefits from the floor to ceiling windows which allow the abundance of excellent natural light to flow throughout the whole building. The Arts Building meets the needs of the modern work place. There is a large communal kitchen with access to a large terrace that over looks a well-maintained courtyard, this all being located on the second floor of the building.

# Compton

---

## Finsbury Park

The Arts Building  
Morris Place  
N4 3JG

---

Unique Penthouse at the Arts Building. A Plug and Play Office Space located minutes away from Finsbury Park station.

---

## For Rent

4,737 ft<sup>2</sup>

---

## Content

[View on Website](#)





# Compton

---

## Finsbury Park

The Arts Building  
Morris Place  
N4 3JG

---

Unique Penthouse at the Arts Building. A Plug and Play Office Space located minutes away from Finsbury Park station.

---

**For Rent**  
4,737 ft<sup>2</sup>

---

## Floor Areas & Outgoings

---

The accommodation comprises the following areas:

Name	sq ft	Rent (sq ft)	Rates Payable (sq ft)	Service Charge (sq ft)	Total /sq ft	Total month	Total year	Availability
5th	4,737	£47.50	£15	£15.69	£78.19	£30,865.50	£370,386.03	Available

# Compton

---

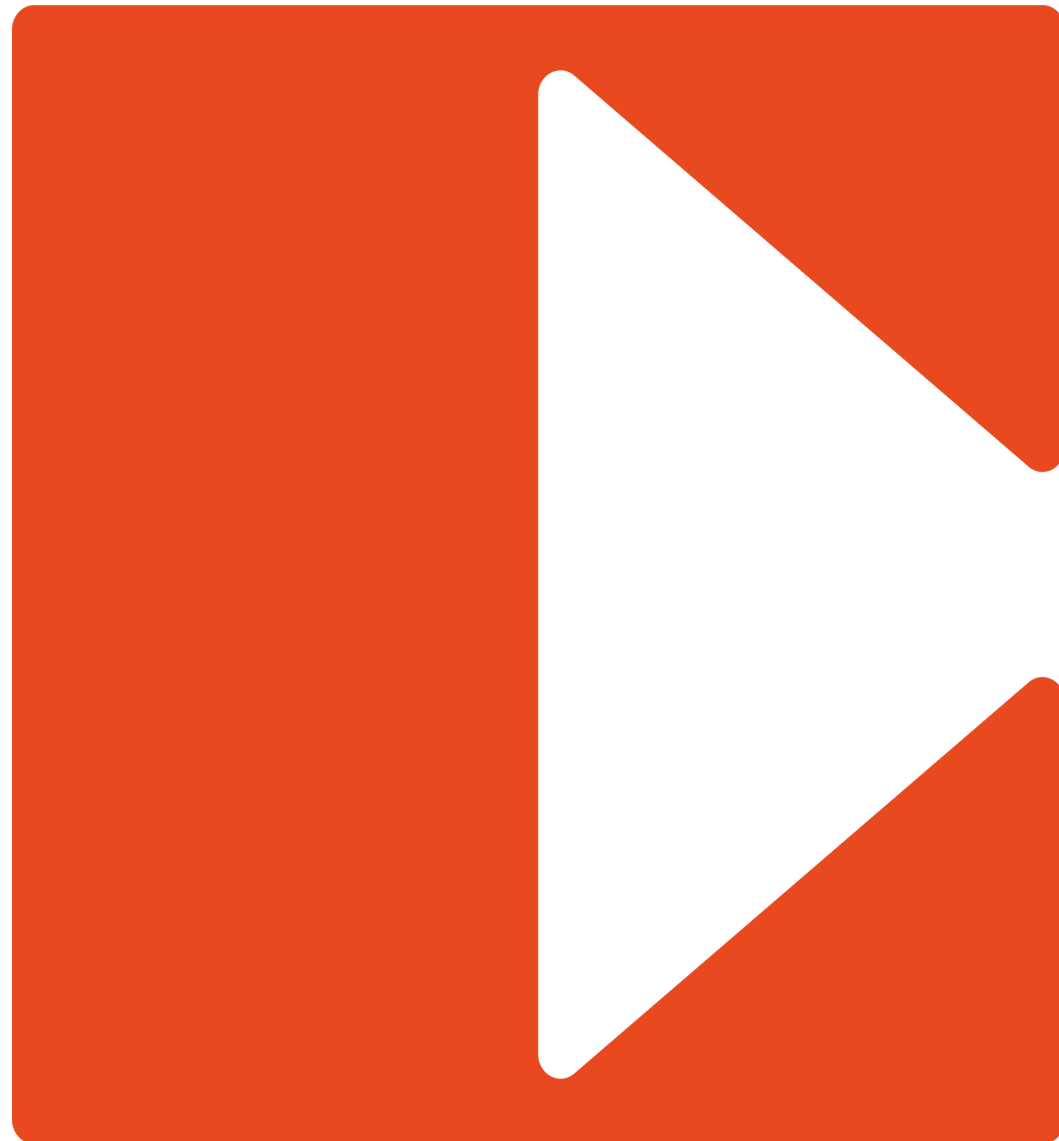
## Contact Us

All appointments to view must be arranged via sole agents, Compton, through —

Josh Perlmutter  
[jp@compton.london](mailto:jp@compton.london)  
07814 699 096

Andy Gilbert  
[ag@compton.london](mailto:ag@compton.london)  
07833993714

Samantha-Jo Roberts  
[sr@compton.london](mailto:sr@compton.london)  
07704343032



020 7101 2020  
[compton.london](http://compton.london)

Compton gives notice that these particulars are set out as a general outline only for the guidance of intending Purchasers or Lessees and do not constitute any part of an offer or contract. Details are given without any responsibility and any intending Purchasers, Lessees or Third Party should not rely on them as statements or representations of fact, but must satisfy themselves by inspection or otherwise as to the correctness of each of them. No person employed or engaged by Compton has any authority to make any representation or warranty whatsoever in relation to this property. Compton is the licensed trading name of Compton RE Disposals Limited. Company registered in England & Wales no. Registered office: 47 St John's Square, Clerkenwell, London, EC1V 4JJ  
Generated on 21/10/2024