



116 Southgate Drive, Crawley
£1,900 pcm

INSPIRE



116 Southgate Drive

Crawley, Crawley

Inspire Estate Agents are pleased to offer for let this 4 bedroom end of terrace house in Southgate. This LARGE four bedroom house is in a GREAT LOCATION being walking distance from Crawley Town centre and Crawley train station. Internally the property has four GOOD SIZED BEDROOMS, cloakroom, dining room, fitted kitchen, CONSERVATORY, lounge and a rear garden. Available immediately. Council Tax band: D

- 4 Bedrooms
- 3 Reception Rooms
- End Terraced
- Cloakroom
- Conservatory
- Fitted Kitchen
- Family Bathroom
- Downstairs Toilet
- Newly Decorated throughout
- New carpets to be installed before tenancy





Lounge

13' 0" x 21' 0" (3.96m x 6.40m)
Lounge: 3.96m x 6.4m (13' x 21')

Kitchen

11' 0" x 12' 0" (3.35m x 3.66m)
Kitchen: 3.35m x 3.66m (11' x 12')

Dining Room

9' 0" x 13' 0" (2.74m x 3.96m)

Bedroom 1

10' 3" x 12' 0" (3.12m x 3.66m)
Bedroom 1: 3.12m x 3.66m (10' 3" x 12')

Bedroom 2

10' 3" x 12' 0" (3.12m x 3.66m)
Bedroom 2: 3.12m x 3.66m (10' 3" x 12')

Bedroom 3

10' 11" x 11' 0" (3.33m x 3.35m)
Bedroom 3: 3.33m x 3.35m (10' 11" x 11')

Bathroom

8' 5" x 6' 5" (2.57m x 1.96m)
Bathroom: 2.57m x 1.96m (8' 5" x 6' 5")

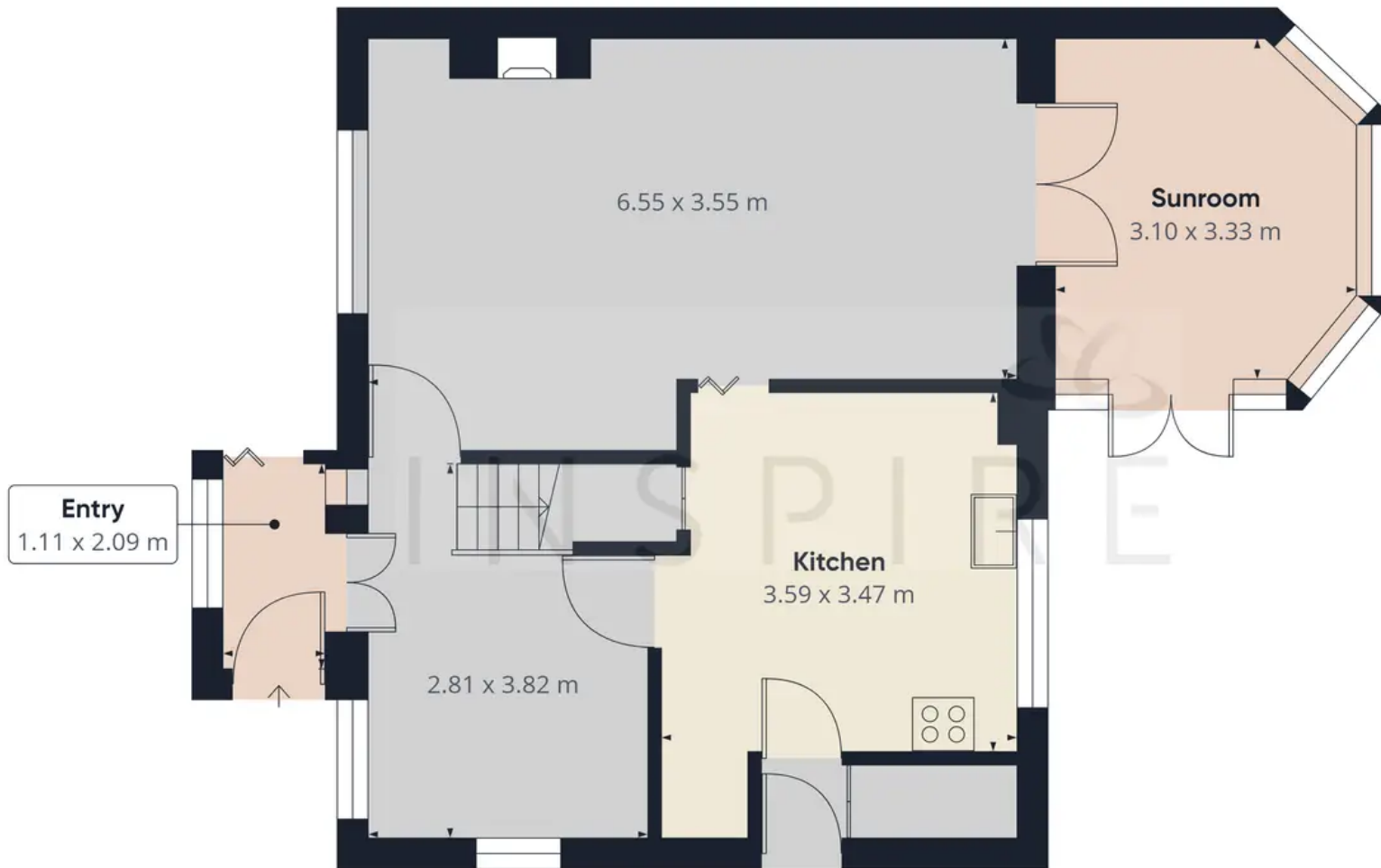
Bedroom 4

6' 11" x 9' 6" (2.11m x 2.90m)



GARDEN





Approximate total area⁽¹⁾
64.88 m²

(1) Excluding balconies and terraces

While every attempt has been made to ensure accuracy, all measurements are approximate, not to scale. This floor plan is for illustrative purposes only.

GIRAFFE360

Floor 0



Inspire

13 Tilgate Parade, Crawley - RH10 5EQ

01293 582335

info@inspireestates.co.uk

<http://www.inspireestates.co.uk>

