



HANS ROAD

KNIGHTSBRIDGE SW3





A spectacular and stylish top floor loft-style lateral apartment located in an impressive period building overlooking Harrods with low outgoings. The property has been updated to an excellent specification, including built-in speakers throughout.

Hans Road is very well located in the heart of Knightsbridge, opposite Harrods, and a short distance from the Brompton Road with a wide variety of internationally renowned shops and restaurants and excellent transport links.



FEATURES

Principal Bedroom with Dressing Room and Ensuite Bathroom
 Double Bedroom with Ensuite Shower • Family Bathroom
 Reception/Dining Room • Kitchen • Laundry Room • Balcony

Price: £3,995,000

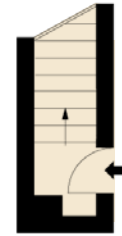
Tenure: Leasehold with 131 Years Remaining

Service Charge: Approx £7,000 per annum

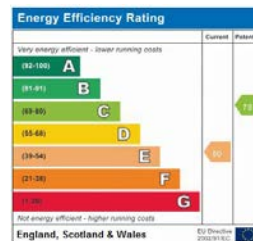
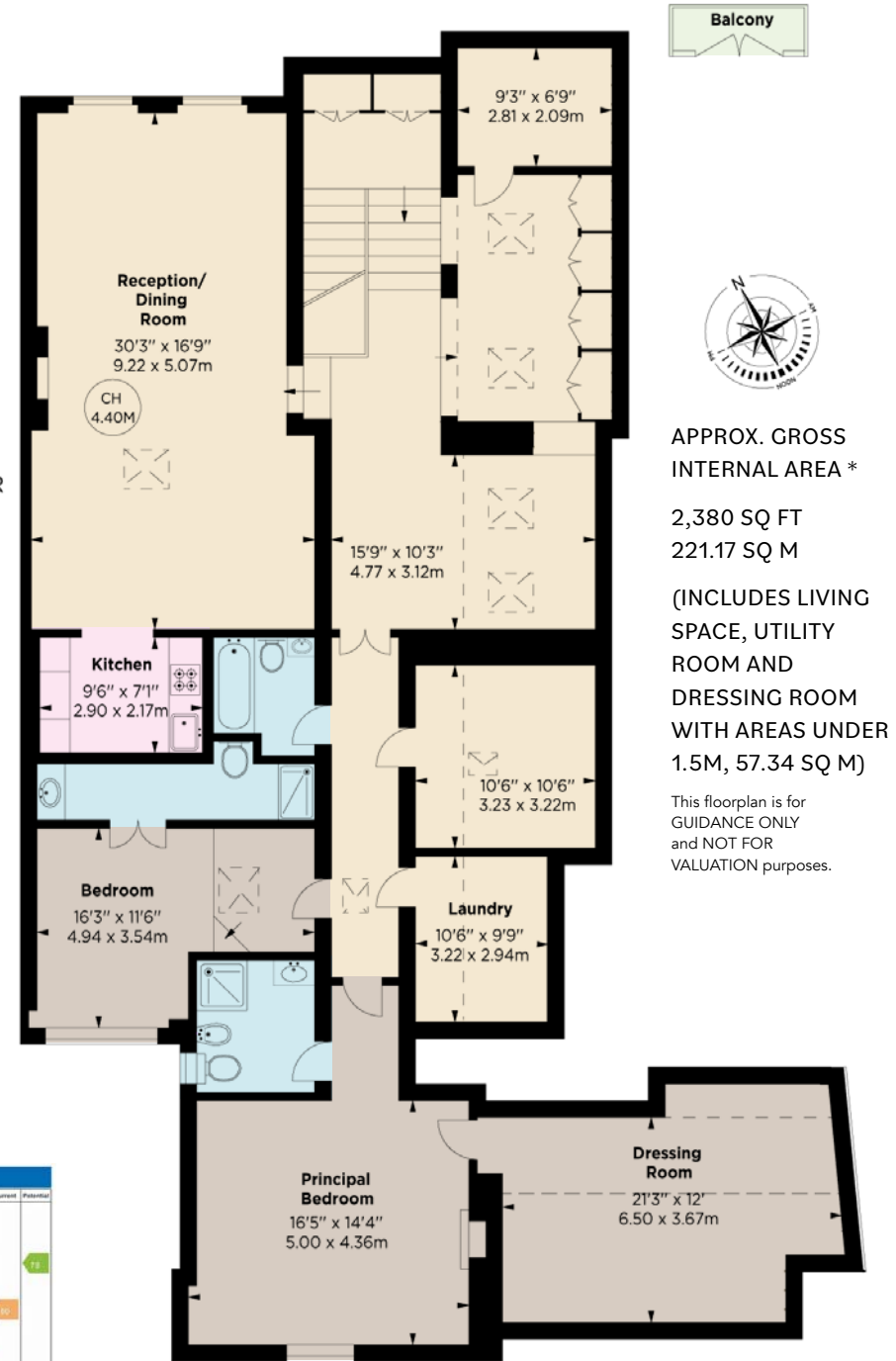


6-8 MONTPELIER STREET,
 LONDON SW7 1EZ
 SALES | +44 (0)20 7581 8277
 LETTINGS | +44 (0)20 7590 1200
 info@nicolasvanpatrick.com
 www.nicolasvanpatrick.com

Key :
 CH - Ceiling Height
 - - - - Under 1.5m



SECOND FLOOR
 ENTRANCE



THIRD FLOOR