

54

OAKLEIGH
CRESCENT



mihomes
property agents

bright and blissful oakleigh crescent *three-bedroom family home*

guide price
£950,000

an immaculate, three bedroom, semi-detached home, offering great style and high attention to detail, versatility and space to suit any living requirements.



description

this home is located in a highly desirable residential road, and boasts a spacious range of rooms, which have been beautifully designed to the highest standards and are all flooded with natural light.

three reception rooms, and a large extended open plan kitchen diner occupy the ground floor, not to mention the added convenience of a shower room with washing facilities.

the kitchen diner is fully integrated with two ovens, a built-in microwave, coffee machine and two fridge freezers, in addition to

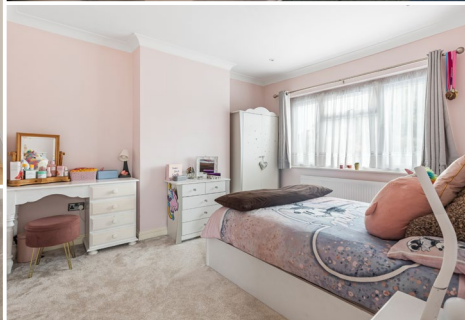
underfloor heating throughout, a skylight and a kitchen island, fitted with two sunken charging pods. aluminium bi-folding doors allow direct access into the garden, which conveniently has two wireless sockets - no need to go outside and get your socks wet!

three sizeable bedrooms occupy the first floor, all served by a large family bathroom which has both a shower and a bluetooth bath. the bathroom is fitted with a heated towel rail and is fully tiled with chrome fixtures and fittings throughout.





the décor throughout is tasteful and modern, allowing for personalisation thanks to the clean and neutral colouring.



location

oakleigh crescent is a highly desirable area offering ease of transport, access to a wide range of facilities and schools and plenty of opportunities for leisure and to enjoy green spaces.

there is plenty of transport available locally with arnos grove tube station close by and offering services on the piccadilly line and new southgate and oakleigh park br stations, on the great northern and thameslink routes. totteridge & whetstone station is nearby, being only one mile away and offering direct access to the centre of london from only 20 minutes via the northern line.

totteridge & whetstone is a london underground station in whetstone in the london borough of barnet, north london. the

station is the penultimate one on the high barnet branch of the northern line, between high barnet and woodside park stations, in travelcard zone 4.

if you're needing to find education options for children, there is a wealth to choose from whether at primary or secondary level.

when it comes to getting out in the fresh air at the weekend or in the evenings, there is also plenty of open space. bethune and brunswick parks are also easily accessible meaning these large green spaces contain plenty of opportunity to relax in the local environment. the local area is buzzing with cafes, restaurants, bars and independent shopping - with similar facilities which are also offered in nearby towns.

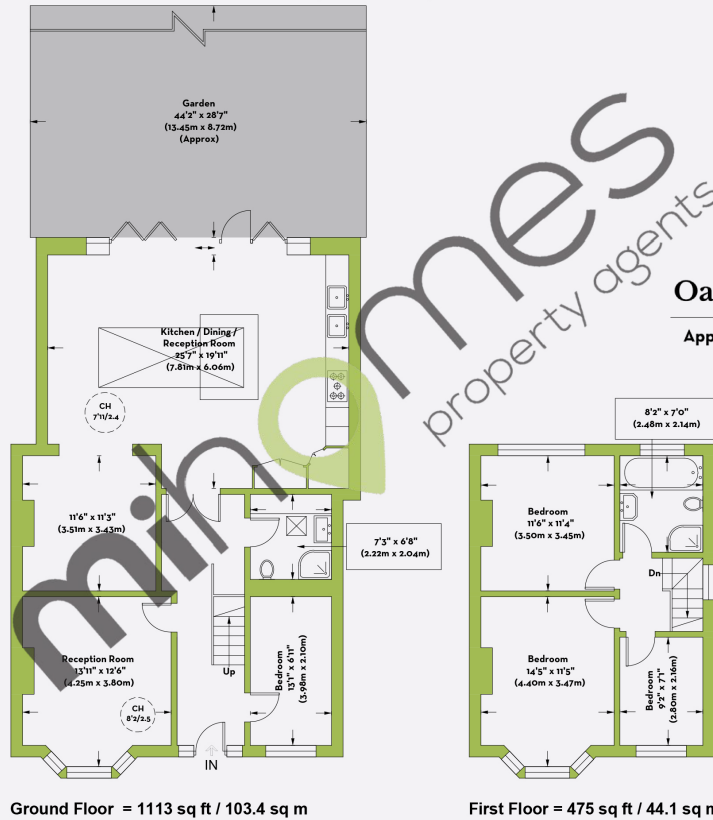
floorplan:

54 oakleigh
crescent, london,
n20 obs

epc rating:
e

council tax band:
e

this plan is for layout purposes only. not drawn to scale unless stated. window and door opening are approximate. whilst every care is taken in the preparation of this plan, please check all dimensions, shapes and compass bearings before making any decisions reliant upon them. (id:1009690)



overview

three bedroom family home with three reception rooms	semi detached
two bathrooms and ground floor utility room	potential for extension (stpp)
sky light	fully integrated kitchen with island
aluminium bi-folding doors into the garden	extended, open plan kitchen diner
sumptuos interiors	complete chain

5 reasons you can trust us to secure your new home


- 1 dedicated whatsapp group for effective sales progression
- 2 low fall through rate (just 6.5%) compared to a national average of over 35%
- 3 an average of 9 weeks between sale agreed and completion
- 4 outstanding client service (4.9/5 stars from over 315 google reviews)
- 5 over 80% of generated business solely via recommendations

we would love to help you make this dream a reality.

let's talk.

 020 7323 9574

 hello@mi-homes.co.uk

 9 onslow parade, hampden square, southgate, n14 5jn

 mi-homes.co.uk

 mihomes propertyagents

 mi.homes

 mihomes