



8 Ludlow Grove

Blackpool, FY2 0PZ

- **NEW TO MARKET 3 BED SEMI DETACHED HOUSE**
- **2 DOUBLE BEDROOMS, 1 SINGLE BEDROOM**
- **RECENTLY DECORATED / NEW FLOORING THROUGHOUT**
- **MOVE IN COSTS £1712.30**

£795 pcm

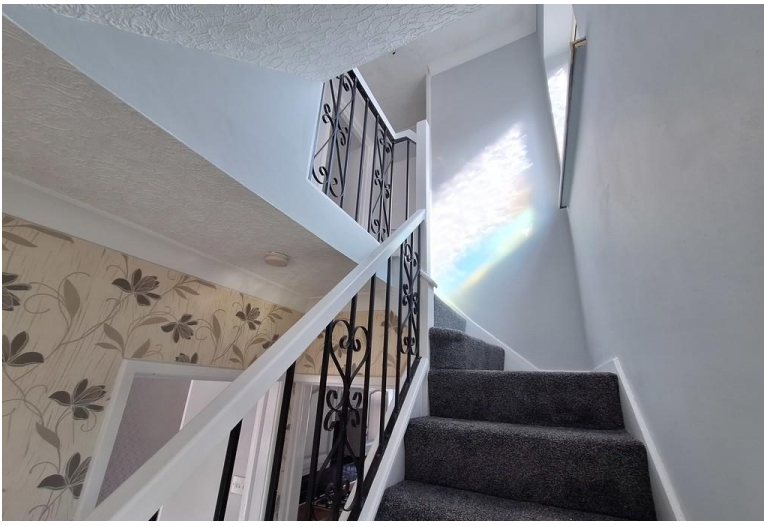
EPC Rating '66'

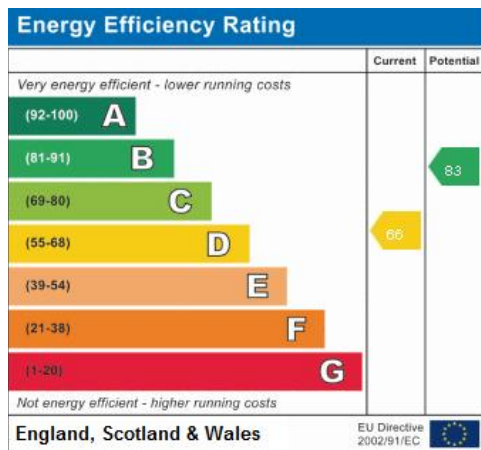




Property Description

NEW TO MARKET 3 BED SEMI DETACHED PROPERTY IN A MUCH SOUGHT AFTER AREA. COMPRISING ENTRANCE HALLWAY, LOUNGE THRO TO DINING ROOM LEADING INTO A CONSERVATORY. FULLY FITTED KITCHEN, WITH RANGE OF WALL AND BASE UNITS, GAS HOB, ELECTRIC OVEN. BATHROOM WITH BATH, WITH SHOWER OVER, WC AND WASH HAND BASIN 2 DOUBLE BEDROOMS, SINGLE BEDROOM. GAS CENTRAL HEATING, DOUBLE GLAZED. LARGE REAR GARDEN, FRONT GARDEN, DRIVE





21 Counce Street
 Blackpool
 Lancashire
 FY1 3LA

www.moveholmes.co.uk
 01253 928200
enquiries@moveholmes.co.uk

Agents Note: Whilst every care has been taken to prepare these sales particulars, they are for guidance purposes only. All measurements are approximate and are for general guidance purposes only and whilst every care has been taken to ensure their accuracy, they should not be relied upon and potential buyers are advised to recheck the measurements