

Love Homes



Tythe Barn Close, Westoning, Bedfordshire MK45 5JT

This captivating three-bedroom detached home, boasting an impressive open plan kitchen/dining area, is nestled in a sought-after cul de sac mere steps from the village high street and schools. Enhanced by recent updates, the property offers stylish living space across two floors.

The ground floor features an entrance lobby, cloakroom, lounge, and an exceptional kitchen/dining room with bi-fold doors, Velux skylights, and modern appliances. Upstairs, three bedrooms and a family bathroom await. Additional highlights include double glazed windows, gas central heating, and a westerly facing rear garden with a patio and garage access. A driveway provides off-road parking.



This property is presented by Duncan Stead - a Love Homes property expert with over 25 years' experience.

Find out more about this property by scanning the QR code.



1.7m

Tenure: Freehold



3



2

Council Tax: D

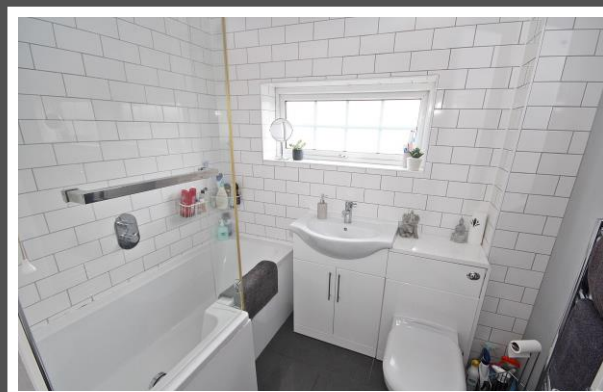


1





"We've really enjoyed living in Westoning over the last 6 years, everyone is so welcoming and friendly. Obviously our favourite room is the kitchen - we always wanted a big open plan space so extending a few years ago made it all happen. It's lovely, especially with the bi-folds open and the sun out and just perfect for entertaining friends and family. We think it is a homely home and hopefully all the new owner needs to do is move in and put their feet up!"





TOTAL FLOOR AREA: 1276 sq ft. (118.6 sq m.) approx.
Drawn by Love Homes for illustrative purposes only. Measurements and areas shown are approximate.

Score	Energy rating	Current	Potential
92+	A		
81-91	B		84 B
69-80	C	70 C	
55-68	D		
39-54	E		
21-38	F		
1-20	G		



These particulars are set out as a general outline in accordance with the Property Misdescriptions Act (1991) only for the guidance of intending purchasers or lessees, and do not constitute any part of an offer or contract. Details are given without any responsibility, and any intending purchasers, lessees or third parties should not rely on them as statements or representations of fact but must satisfy themselves by inspection or otherwise as to the correctness of each of them. We have not carried out a structural survey and the services, appliances and specific fittings have not been tested. All photographs, measurements, floor plans and distances referred to are given as a guide only and should not be relied upon for the purchase of carpets or any other fixtures or fittings. Gardens, roof terraces, balconies and communal gardens as well as tenure and lease details cannot have their accuracy guaranteed for intending purchasers. Lease details, service ground rent (where applicable) are given as a guide only and should be checked and confirmed by your solicitor prior to exchange of contracts. No person in the employment of Love Homes has any authority to make any representation or warranty whatever in relation to this property. Purchase prices, rents or other prices quoted are correct at the date of publication and, unless otherwise stated, are exclusive of VAT. We retain the copyright in all advertising material used to market this Property. All information is as advised by the seller and subject to change. Council tax bands can be subject to change by the local council.

5 The Russell Centre, Coniston Road, Flitwick, MK45 1QY
 Tel: 01525 713111

Email: flitwick@lovehomes.uk

www.lovehomes.uk



Love Homes