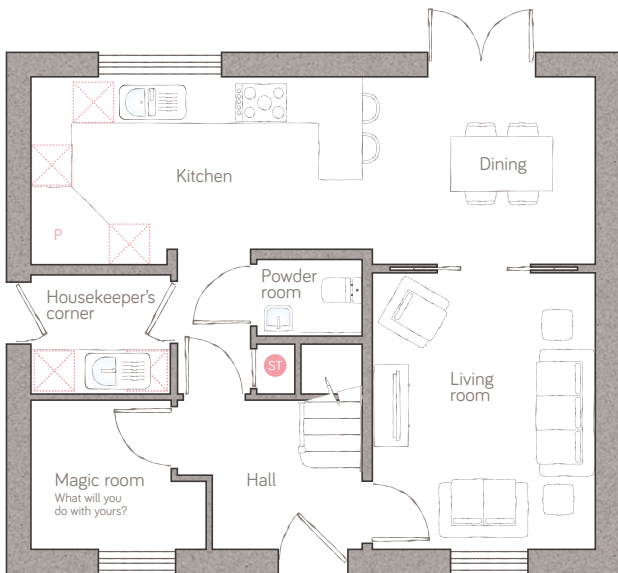




the granary

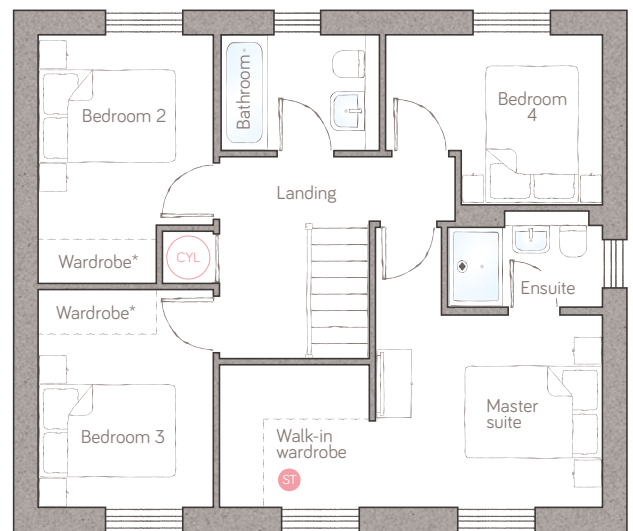
CRAFT COLLECTION • 4 BED, 2 BATH

A beautiful 4-double bedroom home that delivers so much adaptable space. The modern, open plan kitchen diner can flow freely into the lounge and has classic double doors to the garden. The hotel-style master suite boasts a fabulous walk-in wardrobe.



ground floor

kitchen	5.19m x 2.76m (17' 0" x 9' 0")	magic room	2.57m x 2.19m (8' 4" x 7' 1")
dining	3.09m x 2.76m (10' 1" x 9' 0")	powder room	1.55m x 1.12m (5' 1" x 3' 8")
living room	3.27m x 4.06m (10' 7" x 13' 3")	housekeeper's corner	2.04m x 1.75m (6' 8" x 5' 8")



first floor

master suite	3.33m x 4.11m (10' 9" x 13' 4")	bedroom 2	2.57m x 3.65m (8' 4" x 11' 9")
ensuite	2.27m x 1.41m max (7' 5" x 4' 7" max)	bedroom 3	2.57m x 3.20m (8' 4" x 10' 4")
walk-in wardrobe	2.20m x 1.50m (7' 2" x 4' 11")	bedroom 4	3.18m x 2.49m (10' 4" x 8' 1")
		bathroom	2.32m x 1.70m (7' 7" x 5' 6")

ST Storage P Pantry A Appliance CH Air source heat cylinder
Plots 139, 141, 145, 162, 166 as shown. Plot 5 is handed.

For illustrative purposes only. Specifications & layouts may be subject to change.
*Wardrobes in bedrooms 2 & 3 are available as an upgrade.

bunnyhomes

Old Callywith Road, Bodmin, Cornwall PL31 2GT
bunnyhomes.com 01208 244971