



Talbot Road, Notting Hill

£565,000

London, W2

SOMMERVILLE FLURY

Talbot Road, Notting Hill

London, W2

An immaculate top (third) floor flat which has been recently renovated within a period building that is positioned on a quiet treelined section of Talbot Road. The apartment is accessed from the second-floor stairs which lead to contemporary open plan kitchen/living space which has dual aspect. There is a double bedroom with built-in storage and feature window allowing for lots of natural light. The ensuite shower room is stylish with a skylight window.

The communal areas within the building have recently been renovated.

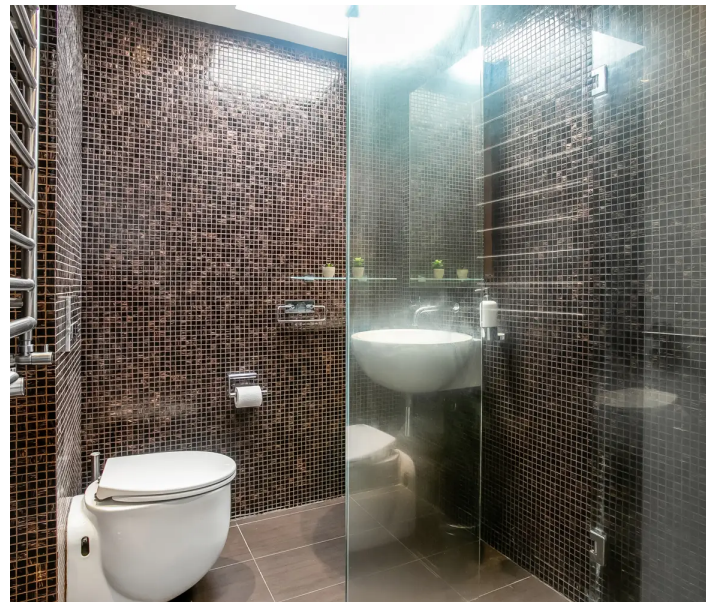
Talbot Road flat is well located within the heart of Notting Hill. Shops, restaurants and cafes on Ledbury Road, Portobello Road and Westbourne Grove are nearby. Transport links are at Westbourne Park (Hammersmith & City and Circle Lines) 0.5 miles away, Royal Oak (Hammersmith & City and Circle Lines) 0.3 miles, and Notting Hill Gate (District, Circle and Central Lines) 0.8 miles away.

Tenure: Leasehold (113 years remaining)

EPC Rating: C

City of Westminster

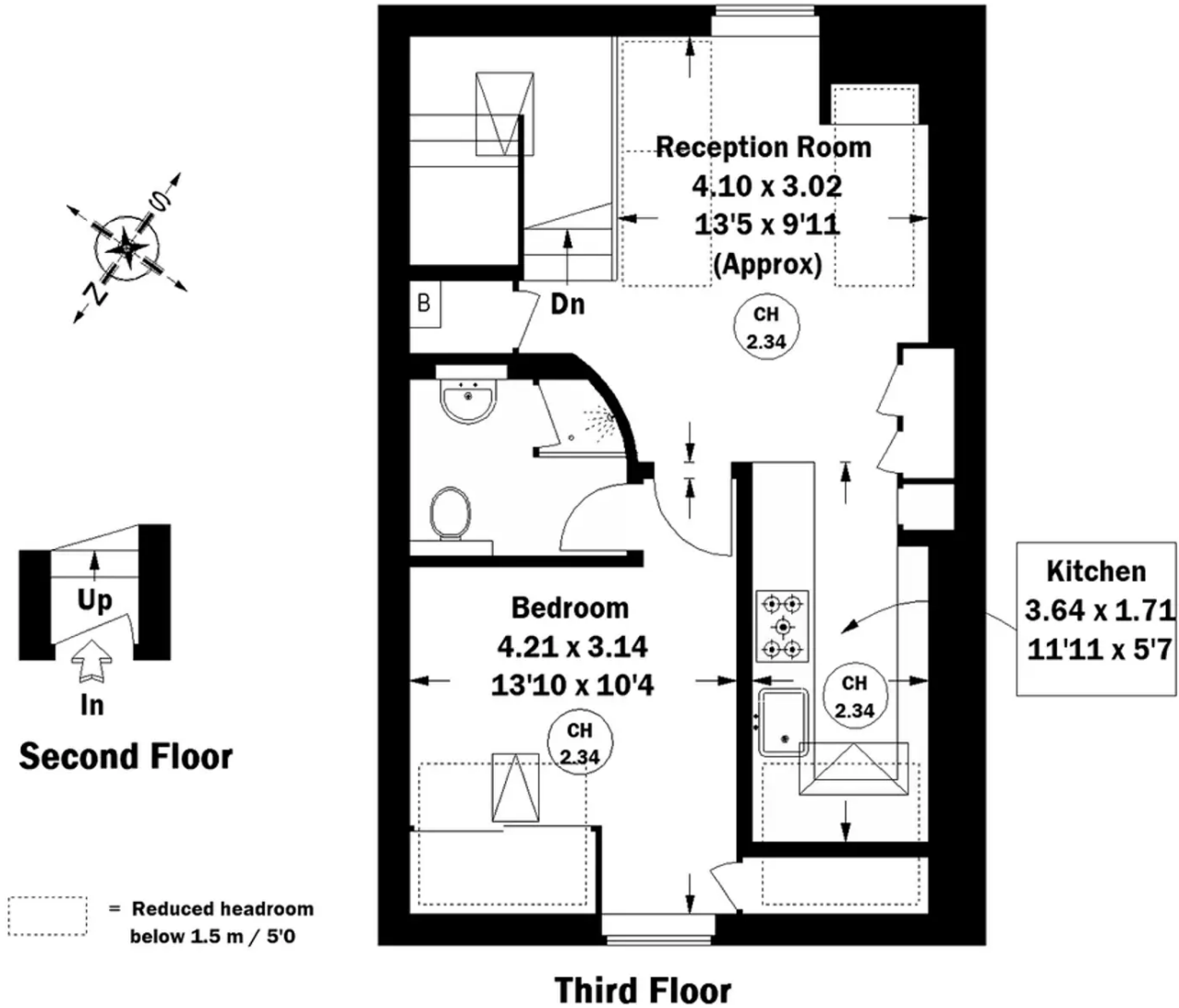
SOMMERVILLE FLURY





Talbot Road, W2

Approximate Gross Internal Area
42.8 sq m / 460 sq ft



Whilst every attempt has been made to ensure the accuracy of the floor plan, measurements are approximate and not to scale.
No guarantee is given on the total square footage of the property quoted on the plan. Figures given are for guidance.
Plan is for illustration purposes only, not to be used for valuations.



Sommerville Flury

Devonshire House, One Mayfair Place, London, W1J 8AJ

+44(0)20 3205 7260

info@sommervilleflury.com

<http://www.sommervilleflury.com>