



**Kensington Gardens Square, London, W2**

**£2,500,000**

SHARE OF FREEHOLD

SOMMERVILLE FLURY

## Kensington Gardens Square, London W2

An elegant two bedroom apartment laterally occupying the the ground and lower ground floors of a Grade II listed, white stucco fronted building on sought-after Kensington Gardens Square.

Refurbished to the highest specification, many original features have been carefully restored or replicated where necessary, ensuring that the apartment maintains its period charm.

The property is equipped with the finest contemporary fixtures and Roundhouse kitchen with Miele fittings, including a bespoke appliances, underfloor heating, oak herringbone floors and RAKO mood lighting.

Kensington Gardens Square is ideally positioned, close to Westbourne Grove. Nestled between Hyde Park and Notting Hill, the property will undoubtedly benefit from the regeneration around Whiteleys, which will make Queensway and Bayswater one of the most desirable areas in Prime Central London.

It is served by excellent transport links and is within close proximity of Notting Hill, Bayswater and Queensway tube stations.

City of Westminster

EPC Rating: D

SOMMERVILLE FLURY

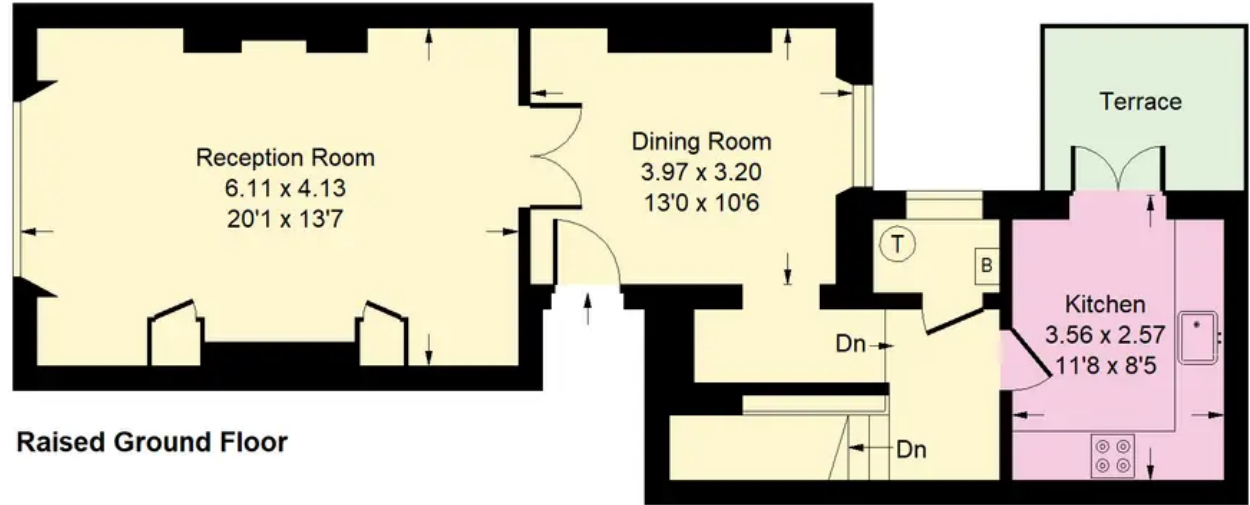







# Kensington Gardens Square, W2

Approx. Gross Internal Area  
135 sq m / 1453 sq ft



 = Reduced headroom  
below 1.5 m / 5'0

Whilst every attempt has been made to ensure the accuracy of the floor plan, measurements are approximate and not to scale.  
No guarantee is given on the total square footage of the property quoted on the plan. Figures given are for guidance.  
Plan is for illustration purposes only, not to be used for valuations.



# SOMMERVILLE FLURY

---

+44(0)20 3205 7260

[info@sommervilleflury.com](mailto:info@sommervilleflury.com)

Devonshire House, One Mayfair Place, London W1J 8A