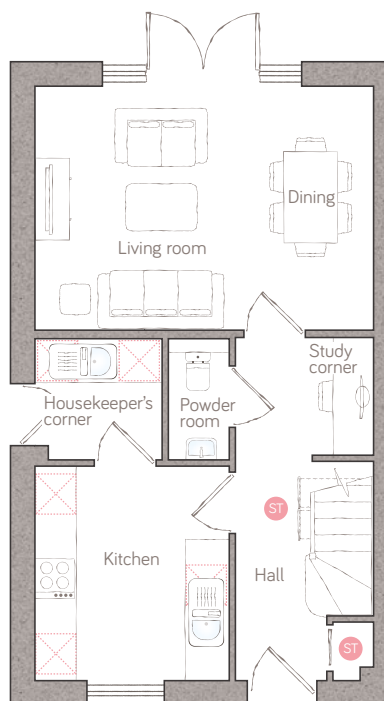




rose cottage

CRAFT COLLECTION • 3 BED, 2 BATH

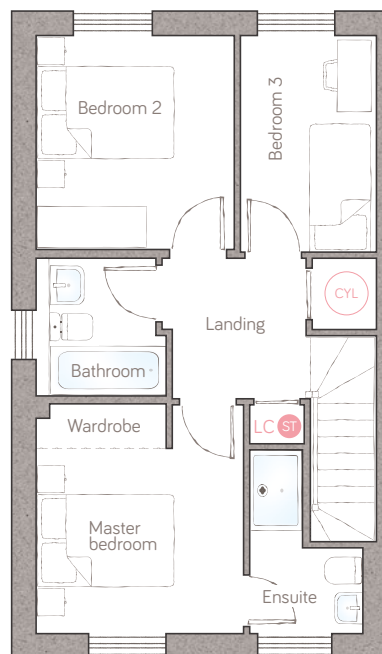
A delightful 3-bedroom semi-detached home that's packed with well-considered features, such as a study corner, a built-in hall cupboard and understairs storage. The living/dining room is bathed in light, with tall windows and classic double doors onto the garden, and the master bedroom boasts an ensuite.



ground floor

| | | | |
|---------------|---------------------------------|----------------------|--------------------------------|
| living/dining | 4.98m x 3.57m (16' 4" x 11' 8") | powder room | 0.90m x 1.78m (2' 11" x 5' 9") |
| kitchen | 3.16m x 2.85m (10' 4" x 4' 5") | housekeeper's corner | 1.86m x 1.78m (6' 1" x 5' 10") |

ST Storage LC Linen closet APpliance ASH Air source heat cylinder
Plot 167 as shown.



first floor

| | | | |
|----------------|---------------------------------------|-----------|--------------------------------|
| master bedroom | 3.03m x 3.35m (9' 11" x 11' 0") | bedroom 2 | 2.89m x 3.12m (9' 6" x 10' 2") |
| ensuite | 1.66m x 2.67m max (5' 5" x 8' 9" max) | bedroom 3 | 2.00m x 3.16m (6' 6" x 10' 4") |
| bathroom | 1.90m x 2.02m (6' 2" x 6' 7") | | |

For illustrative purposes only. Specifications & layouts may be subject to change.

bunnyhomes

Old Callywith Road, Bodmin, Cornwall PL31 2GT
bunnyhomes.com 01208 244971