

Head Office:
Dixon Kelley Estate Agents
1 Penn Court
Station Road, West Moors
Dorset. BH22 0JJ

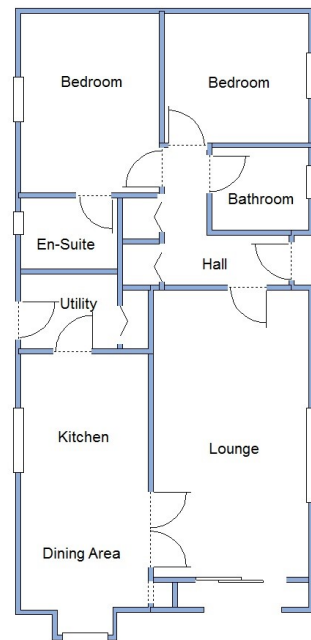
DORSET PARK HOMES

DRAFT

www.dorsetparkhomes.com

Telephone: 01202 877511

9a Pinehurst Park, West Moors, Ferndown, Dorset. BH22 0BW



2 Bedroom Park Home approx 40' x 20'

Accommodation & approximate room dimensions:

- Stately Albion 'Goodwood' 2000
- Entrance Hall: Cloaks & Storage cupboard. Hatch to roof.
- Kitchen/Diner approx 16'9" x 8'5" plus bay window. Range of floor and wall cupboards. Built in oven & hob with extractor fan over (untested). Space for fridge/freezer. Bay window.
- Utility Room: Cupboard housing gas combination boiler installed April 2022. Cloaks cupboard. Plumbing for washing machine & space for tumble dryer.
- Lounge: approx 19'0" x 10'7". Feature fireplace. Patio doors to front porch.
- Bedroom 1: approx 11'9" x 9'4". Built-in wardrobes and drawer unit.
- En-Suite Shower Room
- Bedroom 2: approx 9'4" x 8'7". Built-in wardrobes .
- Bathroom: Panelled bath. Pedestal wash basin & WC.
- Gas Central Heating (system untested)
- PVCu Double-Glazing
- Parking on Plot & Delightful Garden
- Age Restriction 45+ Pets Considered
- Popular residential Park near to local amenities.

Beautifully Presented



Price £169,950

Pitch Fee: approx £241.66 per cal month

Subject to Annual Review

Council Tax Band: 'A'

Tenure: 1983 Mobile Homes Act Agreement

VIEWING STRICTLY BY APPOINTMENT WITH THE VENDOR'S AGENT Dorset Park Homes 01202 877511

IMPORTANT NOTE: These particulars are believed to be correct but their accuracy is not guaranteed. They do not form part of any contract. Nothing in these particulars shall be deemed to be a statement that the property is in good structural condition or otherwise, nor that any of the services, appliances, equipment or facilities are in good working order or have been tested. Purchasers should satisfy themselves on such matters prior to purchase Ref.W04507

The recommended specialist in Park Home sales
Proprietor: Simon Dixon

