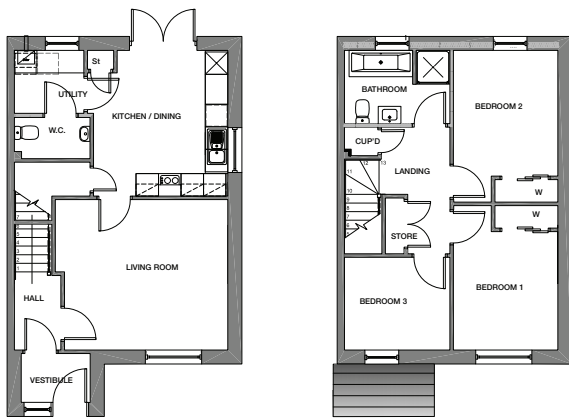


**C - CULLERLIE WITH PORCH**

Please note images shown are example finishes. Individual plot finishes vary - please ask our Sales advisor for specific plot external detailing.



GF

FF

**GROUND FLOOR PLAN**

|                |               |
|----------------|---------------|
| Living Room    | 4363 x 4016mm |
| Kitchen/Dining | 3890 x 3587mm |
| Utility        | 1856 x 1678mm |
| W.C.           | 2019 x 1099mm |
| Vestibule      | 1844 x 1306mm |

**FIRST FLOOR PLAN**

|           |               |
|-----------|---------------|
| Bedroom 1 | 3161 x 2789mm |
| Bedroom 2 | 3356 x 2789mm |
| Bedroom 3 | 2817 x 2476mm |
| Bathroom  | 2817 x 1947mm |

## SITE PLAN

Please note images show example external finishes.  
Individual plot finishes vary – please ask our Sales advisor for specific plot external detailing.

**PLOT NUMBERS** 13 / 17 / 33 / 41 / 42 / 46 / 47 / 52

|          |                       |            |                    |           |                    |
|----------|-----------------------|------------|--------------------|-----------|--------------------|
| <b>A</b> | BALBIRNIE             | 2 BED SEMI | <b>F</b>           | ARDBLAIR  | 3 BED DETACHED SG  |
| <b>B</b> | KINTRAW               | 3 BED SEMI | <b>G</b>           | DUNBEATH  | 4 BED DETACHED SG  |
| <b>C</b> | CULLERLIE WITH PORCH  | 3 BED SEMI | <b>H</b>           | CALLANISH | 4 BED DETACHED SG  |
| <b>D</b> | CULLERLIE WITH CANOPY | 3 BED SEMI | <b>J</b> <b>J2</b> | LOCHBUIE  | 4 BED DETACHED SG+ |
| <b>E</b> | ACHMORE               | 3 BED SEMI | <b>K2</b>          | ORMAIG    | 4 BED DETACHED SG* |



All images and floorplans are for illustrative purposes only. Care has been taken to ensure the accuracy of information provided. Dimensions given are correct at time of print but should not be used for ordering flooring or furnishing items. External finishes may vary – please check with your Sales Advisor for individual plot details. Images, photographs

