

**Joyce Heeps Homes Ltd**  
E.K. Business Park  
14 Stroud Road  
East Kilbride  
G75 0YA



## **Dunlop Tower, The Murray East Kilbride, G75 0BS**

Joyce Heeps Homes are delighted to market this two-bedroom flat is located on the ground floor of this high-rise block, located very close to East Kilbride Town Centre.



### **Features**

Opportunity For Cash Buyer

Ground Floor

Modern kitchen

Shower Room

Ample storage

Security entry

Very close to East Kilbride Town Centre.

UPVC double-glazing

## **East Kilbride's Local Estate Agent**

[www.joyceheepshomes.com](http://www.joyceheepshomes.com)  
[info@joyceheepshomes.co.uk](mailto:info@joyceheepshomes.co.uk)

**Joyce Heeps Homes Ltd**

E.K. Business Park  
14 Stroud Road  
East Kilbride  
G75 0YA



**Joyce Heeps  
HOMES**

01355 571883

This spacious two-bedroom flat is located on the ground floor of Dunlop Tower, very close to East Kilbride Town Centre, Village and Train Station.

It comprises of the entrance vestibule, hallway with ample storage, spacious lounge leading to the

modern fitted kitchen, two double bedrooms and shower room.



**East Kilbride's Local Estate Agent**

[www.joyceheepshomes.com](http://www.joyceheepshomes.com)  
[info@joyceheepshomes.co.uk](mailto:info@joyceheepshomes.co.uk)

**Joyce Heeps Homes Ltd**  
E.K. Business Park  
14 Stroud Road  
East Kilbride  
G75 0YA



The kitchen has a range of birch effect base and wall cabinets, integrated electric oven, ceramic hob, and space for freestanding appliances.

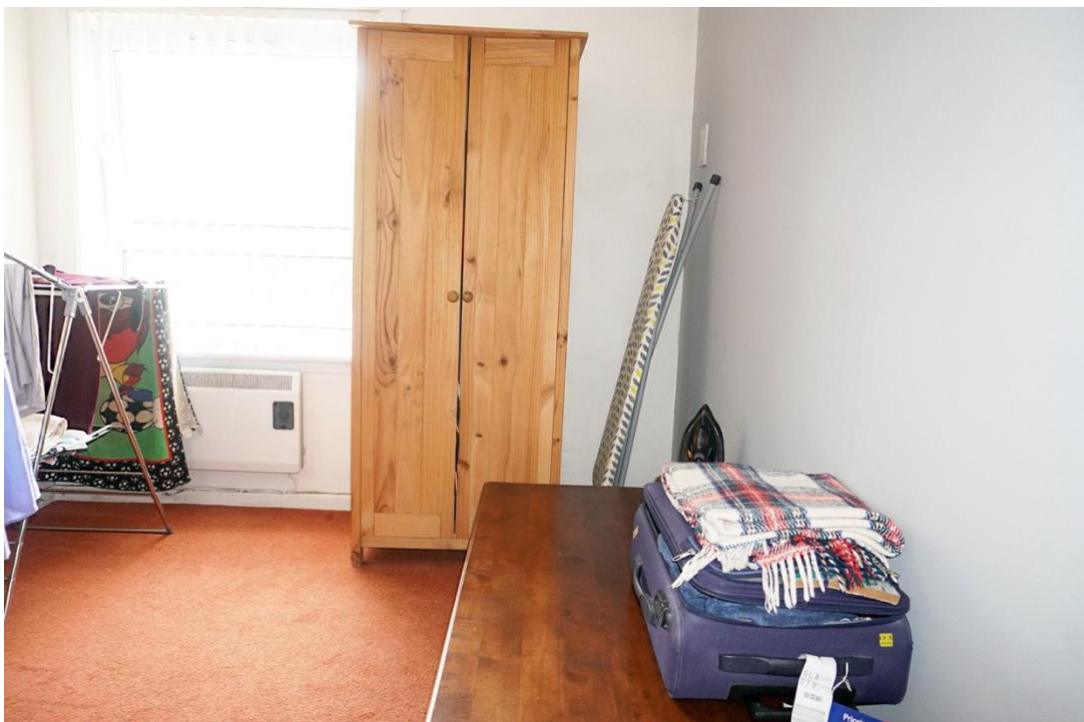


**East Kilbride's Local Estate Agent**

[www.joyceheepshomes.com](http://www.joyceheepshomes.com)  
[info@joyceheepshomes.co.uk](mailto:info@joyceheepshomes.co.uk)



**Joyce Heeps Homes Ltd**  
E.K. Business Park  
14 Stroud Road  
East Kilbride  
G75 0YA



**East Kilbride's Local Estate Agent**

[www.joyceheepshomes.com](http://www.joyceheepshomes.com)  
[info@joyceheepshomes.co.uk](mailto:info@joyceheepshomes.co.uk)

The shower room has a white suite and corner cubicle with electric shower.



It benefits from having UPVC double-glazing, electric heating and has a resident's car park.

**Council Tax Band: A**

**Measurements**

Lounge	17'4" x 12'0"
Kitchen	11'3" x 7'2"
Bedroom 1	14'7" x 8'9"
Bedroom 2	8'6" x 14'3"
Shower room	6'4" x 6'8"



**East Kilbride's Local Estate Agent**

**Joyce Heeps Homes Ltd**

E.K. Business Park  
14 Stroud Road  
East Kilbride  
G75 0YA

**Location**

The property lies within the Murray area very close to East Kilbride's main shopping centre and, Train Station and Village. East Kilbride has an impressive range of high street shopping, entertainment, and sporting facilities all of which are easily accessible from the area. The town also offers bus and rail services connecting to Glasgow City Centre and other destinations throughout west and central Scotland, as well as access to Central Scotland's motorway network.



## East Kilbride's Local Estate Agent

[www.joyceheepshomes.com](http://www.joyceheepshomes.com)  
[info@joyceheepshomes.co.uk](mailto:info@joyceheepshomes.co.uk)



**Joyce Heeps Homes Ltd**  
E.K. Business Park  
14 Stroud Road  
East Kilbride  
G75 0YA



## **Joyce Heeps Homes Ltd.**

For more information or to advise your interest please contact:

**Joyce Heeps Homes Ltd**  
**East Kilbride Business Park**  
**Stroud Road**  
**East Kilbride**  
**G75 0YA**

**Tel: 01355 571 883**  
**Email: [joyce@joyceheepshomes.co.uk](mailto:joyce@joyceheepshomes.co.uk)**

Please note that this schedule has been prepared by us, based on the information provided by our client. Photographs and text are for illustrative purposes only. We believe them to be correct, however, no guarantee is offered or implied. If there is any aspect of this schedule that you wish clarified or that you find misleading, please contact our office where further information is available.

No tests have been made of services, equipment or fittings. No warranty is given or implied as to the condition of buildings services, fixtures, fittings etc. All measurements, distances and acres are approximate. Fixtures, fittings and other items are not included unless specified.



# **East Kilbride's Local Estate Agent**

[www.joyceheepshomes.com](http://www.joyceheepshomes.com)  
[info@joyceheepshomes.co.uk](mailto:info@joyceheepshomes.co.uk)