

£750 pcm

Flat 5 Greeves House, St Johns Chase, March,
Cambridgeshire PE15 8UB



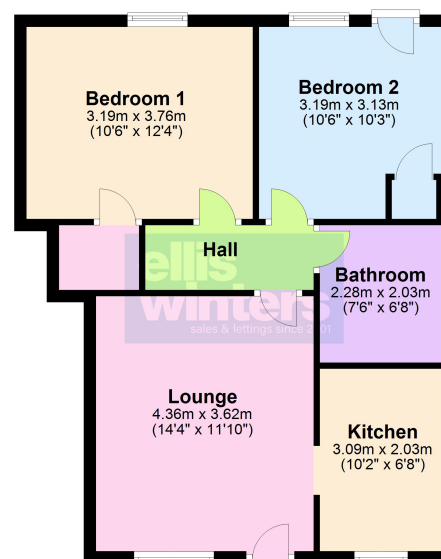
To arrange a viewing call us now on 01354 694900

Deposit £865

Available early October, this two bedroom ground floor apartment is being completely redecorated throughout and has the bonus of allocated parking and communal gardens.

The accommodation comprises kitchen, lounge/diner, two double bedrooms and family bathroom.

Floor Plan



£750 pcm

Flat 5 Greeves House, St Johns Chase, March,
Cambridgeshire PE15 8UB

KITCHEN

3.09m (10'2") x 2.03m (6'8")

LOUNGE

4.36m (14'4") x 3.62m (11'10")

BATHROOM

2.28m (7'6") x 2.03m (6'8")

BEDROOM 1

3.76m (12'4") x 3.19m (10'6")

BEDROOM 2

3.19m (10'6") x 3.13m (10'3")

SERVICES

Mains electricity, water and drainage. The property has electric heating.

LENGTH OF TENANCY

6 months (initially)

Fenland District Council Tax band A

Energy rating - TBA

Ellis Winters & Co 20 Market Hill, Chatteris, Cambridgeshire, PE16 6BA
Tel: 01354 694900 Email: info@elliswinters.co.uk www.elliswinters.co.uk