



3 Bedroom Semi-Detached House £280,000

110 Overbrook, Swindon, SN3 6AT

**mcfarlane**  
property.com



## 3 Bedroom Semi-Detached House Swindon East

- No onward chain
- Three Double bedrooms
- Driveway parking and garage
- Tree lined vista

NO ONWARD CHAIN – THREE DOUBLE  
BEDROOMS - GARAGE & DRIVEWAY  
PARKING – POPULAR LOCATION –

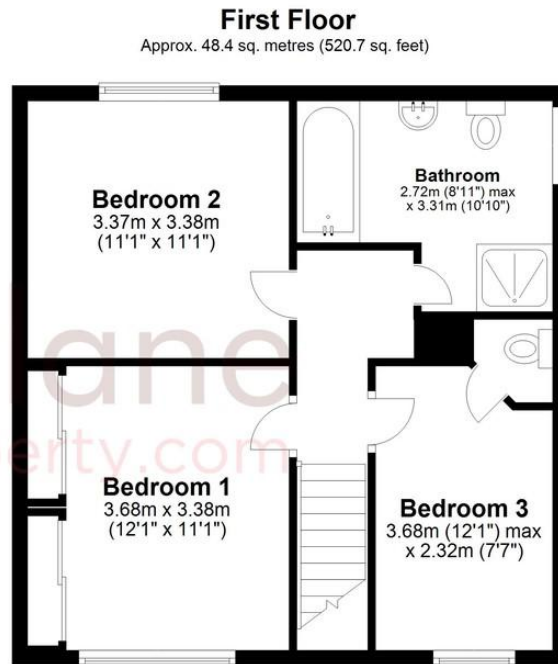
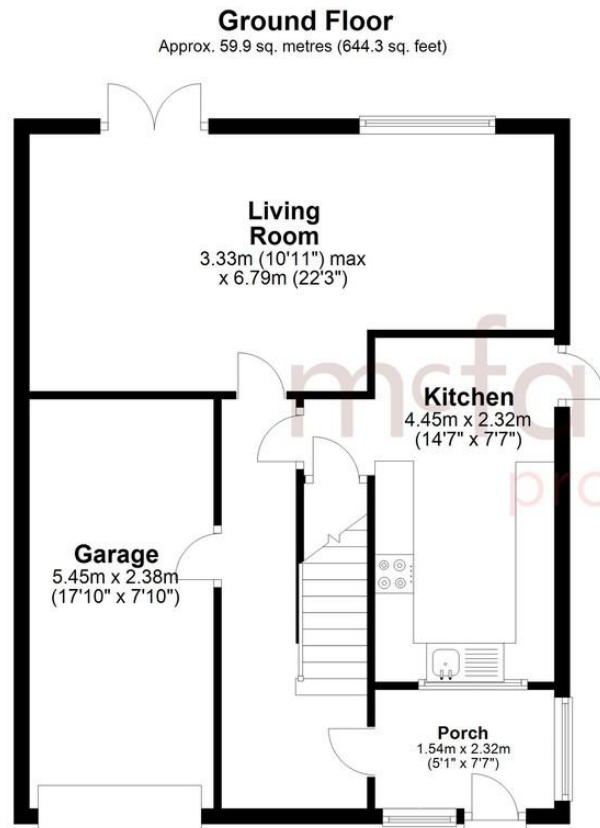
This fantastic three double bedroom family home situated in the popular location of Overbrook, Eldene on the eastside of Swindon. Offering spacious accommodation throughout, the property comprises; fitted kitchen, spacious living room/dinner. Upstairs you are greeted with a large landing space, three double bedrooms, family bathroom and an upstairs toilet off of the third bedroom. Further benefits include a fully enclosed rear garden with tree lined vista, fantastic garage with driveway for parking and gas central heating. Eldene offers great access to local schools, supermarkets and an enjoyable short walk to Coate Water Country Park.







# We where you LIVE



Total area: approx. 108.2 sq. metres (1165.0 sq. feet)

Our team are friendly, experienced and are all local. They know it better than they do their own living rooms and can help you find what you're looking for because **we love where we live.**

We would be delighted to show you around this property.

**Because every home needs a personal touch.**

**If you would like to view this property then please get in touch.**

☎ 01793 296600

✉ [swindon@mcfarlaneproperty.com](mailto:swindon@mcfarlaneproperty.com)

[mcfarlaneproperty.com](http://mcfarlaneproperty.com)

**mcfarlane**  
property.com

**Cricklade.**  
102 High Street  
Cricklade SN6 6AA  
☎ 01793 751044

**Marlborough.**  
106 High Street  
Marlborough SN8 1LT  
☎ 01672 514380

**Old Town.**  
28-30 Wood Street  
Swindon SN1 4AB  
☎ 01793 296880

**Swindon.**  
The Village Centre,  
Redhouse SN25 2FW  
☎ 01793 296600

Agents Note: Whilst every care has been taken to prepare these sales particulars, they are for guidance purposes only. All measurements are approximate are for general guidance purposes only and whilst every care has been taken to ensure their accuracy, they should not be relied upon and potential buyers are advised to recheck the measurements