

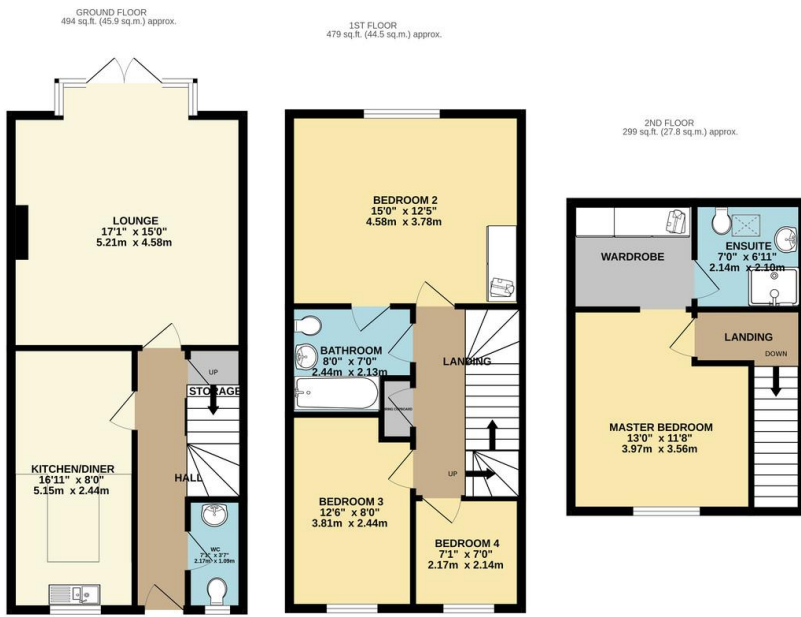


Property Summary

Offered with no upward chain this modern four bedroom three story end townhouse is pleasantly situated on a quiet cul-de-sac within the highly sought-after location of the Knighton Village / Clarendon Park borders. The accommodation comprises of main entrance hall, fitted kitchen and diner, spacious lounge, ground floor WC, first landing to three bedrooms and family bathroom, further landing to master bedroom with walk-in wardrobe and ensuite shower. Front and rear landscaped gardens, garage. Call to view today.



EPC TO FOLLOW....



TOTAL FLOOR AREA: 1272 sq.ft. (118.2 sq.m.) approx.
Whilst every attempt has been made to ensure the accuracy of the floorplan contained here, measurements of doors, windows, rooms and any other items are approximate and no responsibility is taken for any error, omission or mis-statement. This plan is for illustrative purposes only and should be used as such by any prospective purchaser. The services, systems and appliances shown have not been tested and no guarantee as to their operability or efficiency can be given.
Made with Metropix ©2023

- Modern Town House
- Four Bedrooms
- Three Storey
- Quiet Cul De Sac
- Knighton Village / Clarendon Park
- No Upward Chain
- Master Ensuite
- Kitchen / Diner

phillips george | sales & lettings

Agents Note: Whilst every care has been taken to prepare these sales particulars, they are for guidance purposes only. All measurements are approximate and for general guidance purposes only and whilst every care has been taken to ensure their accuracy, they should not be relied upon and potential buyers are advised to recheck the measurements

46 Long Street, Wigston, Leicestershire, LE18 2AH
info@phillipsgeorge.co.uk
0116 216 8178

