



LAWRENCE RAND

1 Wigton Gardens, Stanmore

Offers in Region of **£625,000**



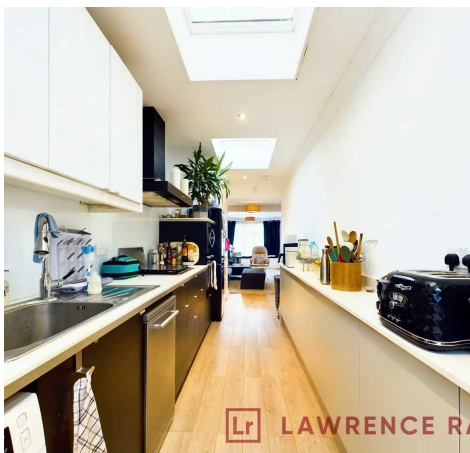
1 Wigton Gardens

Stanmore, Stanmore

'Two properties for the price of one.' Extended three-bedroom end of terrace, excellent condition throughout, ample living space. Ground floor: spacious living room, fully fitted kitchen. Large studio/annexe. Spacious garden with lawn and decking. Large outbuilding with power. Parking for 2 cars. Council Tax band: D

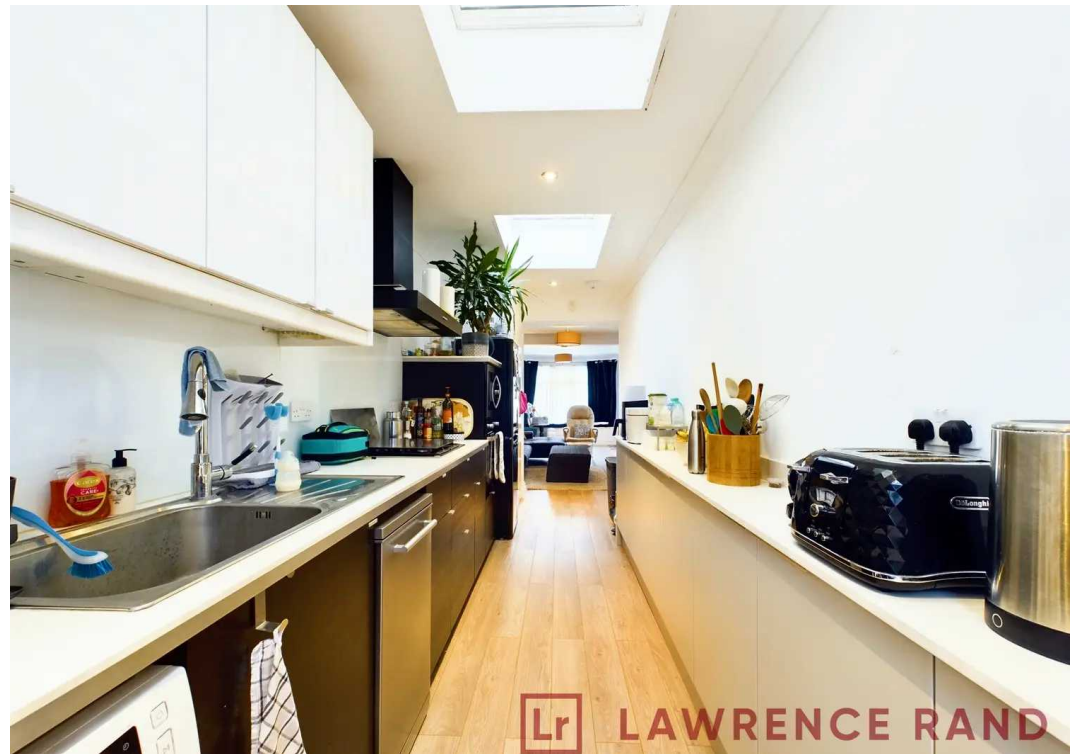
Tenure: Freehold

- Extended end terrace house
- Large studio/ granny flat
- Excellent condition
- Three bedrooms
- Two bathrooms
- Spacious garden to rear
- Large outbuilding with power
- Parking for two cars
- Close To Canons Park And Queensbury Tubes
- Close To excellent local schools and amenities

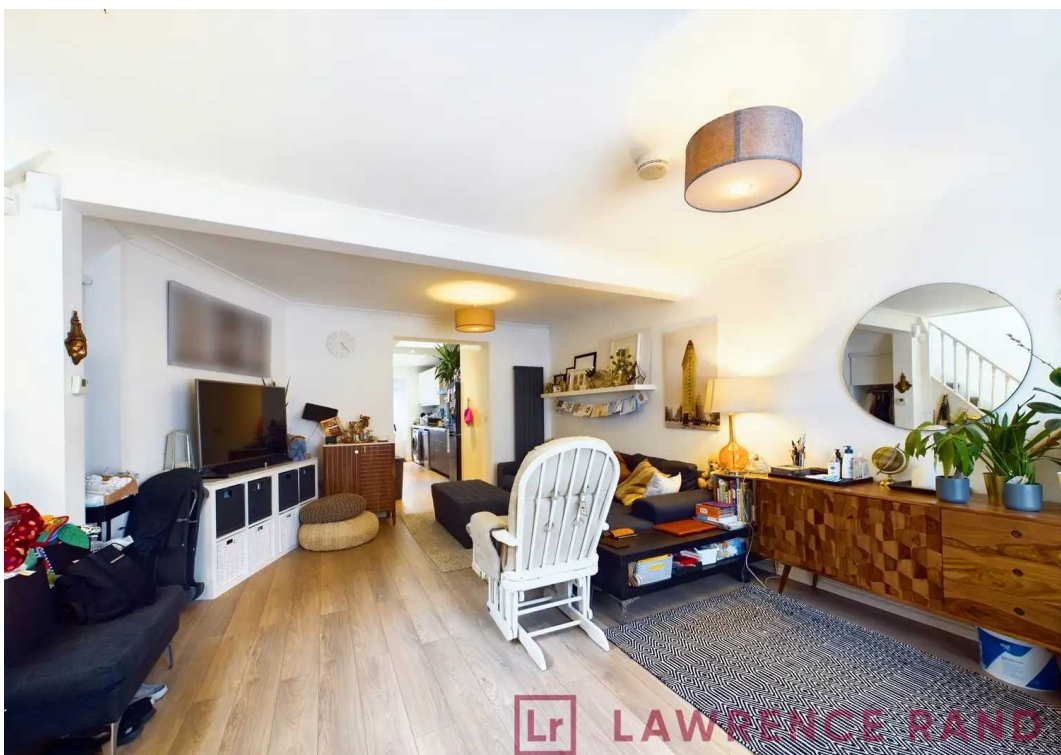




 LAWRENCE RAND



 LAWRENCE RAND



 LAWRENCE RAND



 LAWRENCE RAND



Ground Floor Building 1



Floor 1 Building 1

Approximate total area⁽¹⁾

1407.77 ft²
130.79 m²

(1) Excluding balconies and terraces

While every attempt has been made to ensure accuracy, all measurements are approximate, not to scale. This floor plan is for illustrative purposes only.



Ground Floor Building 2



Lawrence Rand

Lawrence Rand, 106 Victoria Road - HA4 0AL

01895 632211

Info@lawrence-rand.co.uk

www.lawrence-rand.co.uk/



LAWRENCE RAND