



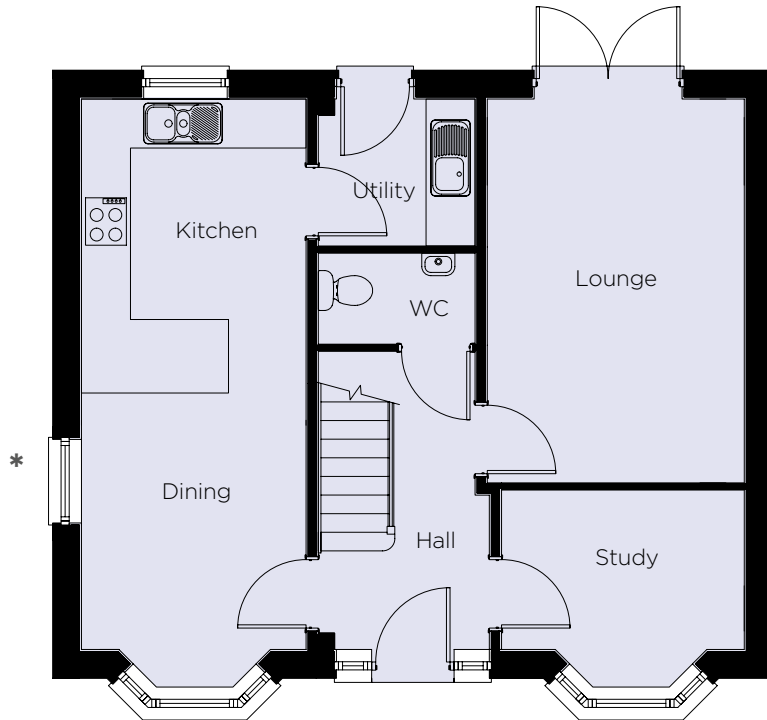
THE  
**BAMFORD**  
A four bedroom detached home



**BLUEBELL**  
HOMES

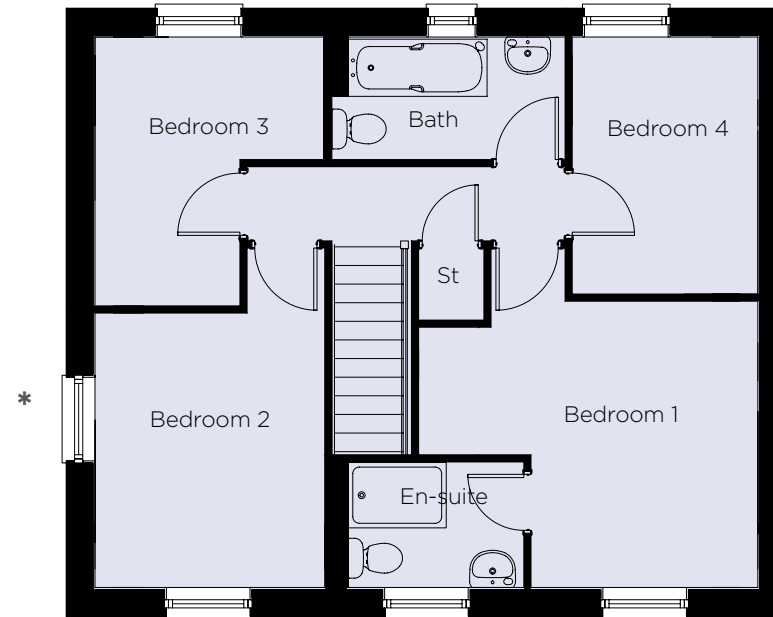
# THE BAMFORD

A four bedroom detached home



## Ground Floor

Kitchen	3.60m x 2.75m	11'10" x 9'0"
Dining	3.63m x 2.75m	11'11" x 9'0"
Lounge	4.70m x 3.15m	15'5" x 10'4"
Study	2.97m x 2.43m	9'9" x 8'0"



## First Floor

Bedroom 1	4.15m x 3.51m	13'8" x 11'6"
Bedroom 2	3.36m x 2.81m	11'0" x 9'3"
Bedroom 3	3.29m x 2.80m	10'10" x 9'2"
Bedroom 4	3.15m x 2.27m	10'4" x 7'5"

Plots 63 & 77 have no windows indicated by \*  
Elevational treatments may vary by plot.

These images are designed to give an impression of the development and our housetypes - they may not reflect a specific plot and do not form part of any contract. Final finishes, landscaping and detail will vary. This information has been provided in good faith, however all layouts and measurements are approximate only. Some house types include areas of reduced headroom. Bathroom and kitchen layouts are indicative only and designs may change due to our process of continuous product development. Images used in marketing materials may be computer generated or photography of previous developments. Dimensions are taken to the maximum.

**CONSUMER  
CODE FOR  
HOME BUILDERS**

[www.consumercode.co.uk](http://www.consumercode.co.uk)



**BLUEBELL  
HOMES**